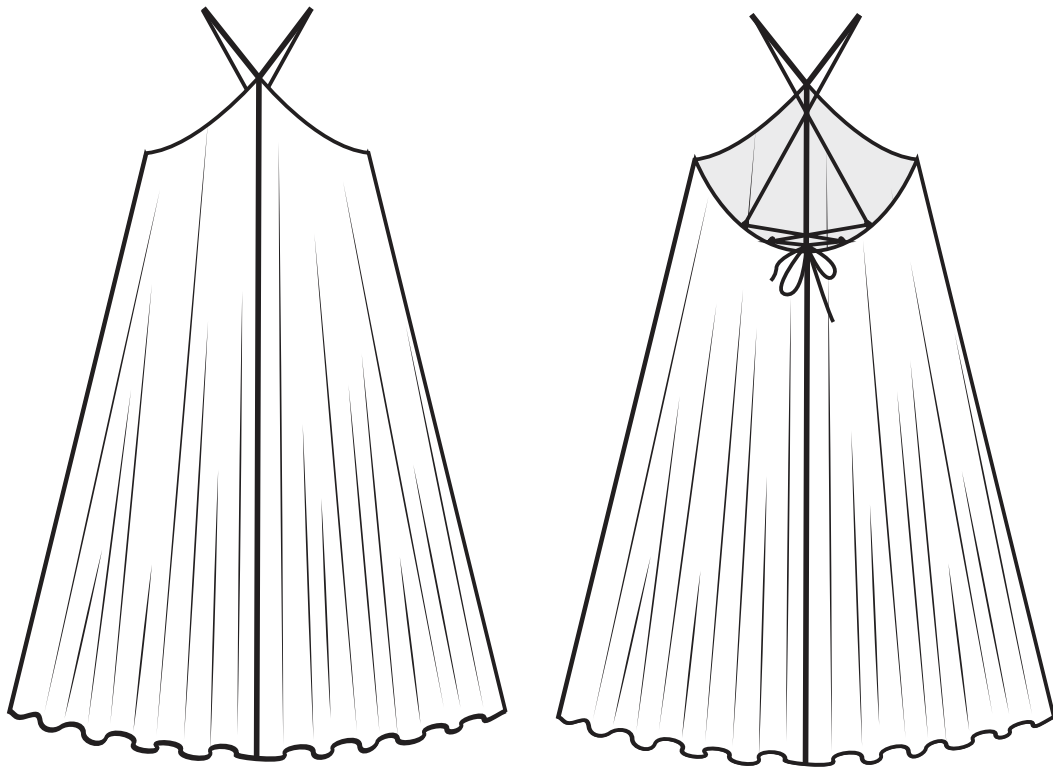


# Peppermint

## Somerset Swing Dress

A sewing pattern from *Peppermint*,  
created in collaboration with:

SEWING PATTERNS  
**by masin**



## Spoonflower

This pattern was made possible by our wonderful sewing partner [Spoonflower](#)! From fabric to wallpaper to home decor, Spoonflower is one of the largest marketplaces for designs by independent artists from around the world. They are committed to reducing their carbon footprint and lessening negative impacts as much as possible. They make their products with water-based inks and responsibly sourced materials using their innovative, on-demand printing process. Each order is printed and made in the USA by their team of manufacturing experts, and when you make a purchase, an independent artist earns up to 15 per cent royalties on their design. Pop over to [Spoonflower](#) for inspiration for your next me-made project.

FOR ALL OUR SEWING PATTERNS, HEAD TO [PEPPERMINTMAG.COM/SEWING-SCHOOL](https://peppermintmag.com/sewing-school)

# Peppermint Patterns

## SEWING PATTERN TERMS AND CONDITIONS

**Thank you for downloading this pattern!**  
Here are a few TandCs before you get started...

---

© Copyright of this pattern remains with *Peppermint Magazine*.

This pattern has been created for you to print and copy for individual home use only.

The pattern cannot be used for commercial purposes or to create and sell garments.

The pattern cannot be copied or distributed to others (physically or digitally).

If you'd like to feature the pattern on your website or social media (thank you!), we just ask that you please link to [peppermintmag.com](http://peppermintmag.com) and the patternmaker, and that you do not upload the pattern or instructions.

The pattern can be used for non-commercial, non-paid community sewing groups, but not for ticketed and paid-for sewing workshops.

Please contact *Peppermint* if you'd like to find out about our licensing fee for workshops.

If you'd like to share your makes on social media, please tag us @PeppermintMagazine #PeppermintPatterns #PeppermintSomersetSwingDress so we can see your handiwork!

---

**GET IN TOUCH:** [sewing@peppermintmag.com](mailto:sewing@peppermintmag.com)

**MORE PATTERNS:** [peppermintmag.com/sewing-school](http://peppermintmag.com/sewing-school)

# printing and tracing

## PRINTING THE PDF PATTERN

This pattern includes layers. In A4, there are 43 pages. In A0, there are 3 pages to print.

### A0 pattern

Contact your local print or copy shop for large-scale printing.

### A4 pattern

Please note: Test tile is on page A1.

Print out the test tile to check your printer settings are correct before printing out your complete set of tiles. Print pattern tiles on a standard home printer on US or A4 size paper.

US letter paper size: 8 ½ inches x 11 inches

A4 paper size: 210mm x 297mm

Correct pattern tile/printed borders

#### Step 1:

Print out test tile. Measure the printed borders of the test pattern tile as marked. If your tile size is correct, print out all pattern tiles.

If not correct, check your printer settings. Your printer should have one of these options below to choose to print at correct size.

- Print at actual size
- Print at 1:1
- Print with no scaling

#### Step 2:

Each tile includes a number. Place all pattern tiles with numbers right way up as shown in PDF layout. Cut excess paper at border lines on the top and left side of each tile.

#### Step 3:

Assemble pattern tiles. Place pattern tiles in horizontal rows. Refer to assembled PDF pattern map. To assemble your tile rows, apply glue/tape to right side of each tile between the border line and edge of paper. Align the trimmed border side of the pattern tile on the border line of the matching tile to the left side. With excess edge placed underneath, press down to stick tiles in place. Repeat this process to complete each row. Complete all horizontal rows.

#### Step 4:

Glue/tape horizontal rows in position. Apply glue/tape to lower excess edges of each row. Match printed borders. Stick each row together to complete pattern. Trace pattern of your size. Refer to the size chart to verify correct size before tracing pattern pieces.

# the *peppermint* somerset swing dress

If you're in the business of stealing shows and owning dance floors, there's someone we'd like you to meet: our newest pattern, the vacay-ready Peppermint Somerset Swing Dress! The best bit? Beneath that flouncy skirt lies a supportive, swirl-friendly layer that won't let you down when it's time to bust a move.

We created this beauty in collaboration with Jasmin Henzi of [Sewing Patterns By Masin](#), an independent Swiss designer beloved for her feminine creations (think: ruffles, ruching and *Bridgerton* vibes). While the Somerset is designed to be a mini-dress, the hemline can be easily lengthened should your heart desire. And you're really going to love this bit: there's not one zip or button to contend with, making this a perfect pattern for adventurous beginners.

As for fabric, you want a lightweight material for this one (she's all about the drape) – silk or satin would be just lovely. We went with Spoonflower's [Organic Cotton Sateen](#) and the dopamine design we used is [Paint Splashes Big Navy](#) by *Project Runway* alum and #WearHappyColour creator [Katie Kortman](#). Gorgeous, right? For photos of our make, take a look at our [website](#).

Many thanks to our sewing partner [Spoonflower](#) for helping to make our much-loved patterns possible! From fabric to wallpaper to home decor, Spoonflower is one of the largest marketplaces for designs by independent artists from around the world. They are committed to taking steps to reduce environmental and negative impacts as much as possible, making their products with water-based inks and thoughtfully sourced materials using their innovative, on-demand printing process. Each order is printed and made in the USA by their team of manufacturing experts, and when you make a purchase, an independent artist earns up to 15 per cent royalties on their design. Pop over to [Spoonflower](#) for inspiration for your next me-made project.

We can't wait to see your creations – don't forget to tag #PeppermintPatterns and #PeppermintSomersetSwingDress to share your makes!

## sewing level

Confident beginner

## fabric recommendations

Satins (silk, viscose or polyester)  
Cotton  
Linen  
Lightweight crepe  
Rayon/viscose  
Chiffon (for the overlay dress with an opaque underdress)  
Charmeuse

## notions

2.5m of cord or ribbon

# size chart

	Size A	Size B	Size C	Size D	Size E	Size F	Size G	Size H	Size I	Size J
<b>BUST</b>	84cm	89cm	94cm	99cm	104cm	109cm	116cm	123cm	130cm	137cm
<b>WAIST</b>	64cm	69cm	74cm	79cm	84cm	89cm	96cm	103cm	110cm	117cm
<b>HIP</b>	89cm	94cm	99cm	104cm	109cm	114cm	121cm	128cm	135cm	142cm

# finished garment measurements

	Size A	Size B	Size C	Size D	Size E	Size F	Size G	Size H	Size I	Size J
<b>Bust (underdress)</b>	85cm	90cm	95cm	100cm	105cm	110cm	117cm	124cm	131cm	138cm
<b>Length underarm to hem</b>	57cm	57cm	57cm	57cm	57cm	57cm	57cm	57cm	57cm	57cm

**Please note:** The length measurement above is for both the underdress and overlay dress.

This dress has been designed to be a fun, short mini-dress! Please measure before cutting and feel free to extend the length if you would like.

# yardage

## Overlay Dress Fabric (140cm-wide fabric)

Size A	Size B	Size C	Size D	Size E	Size F	Size G	Size H	Size I	Size J
170cm	175cm	180cm	185cm	190cm	195cm	200cm	205cm	210cm	215cm

**Please note:** If your fabric has a directional print, or you wish to extend the length, more fabric may be required.

## Underdress Lining Fabric (140cm-wide fabric)

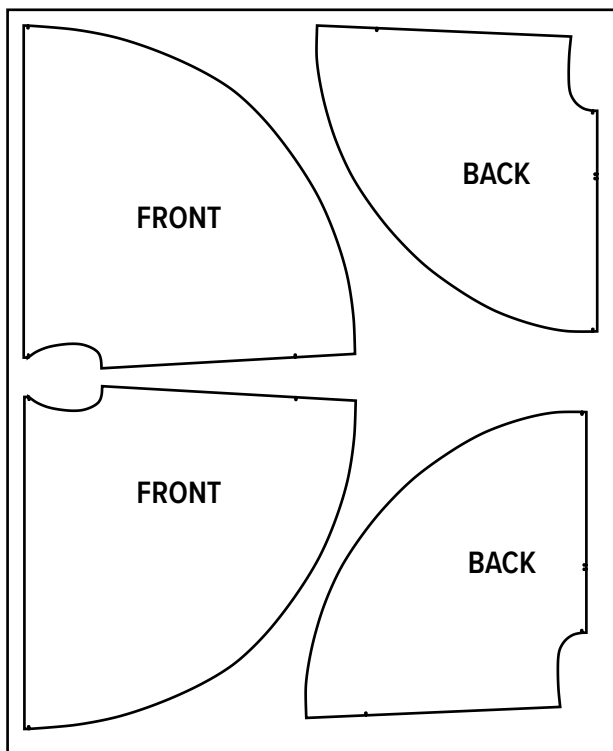
Size A	Size B	Size C	Size D	Size E	Size F	Size G	Size H	Size I	Size J
80cm	80cm	80cm	85cm	85cm	85cm	85cm	120cm	120cm	120cm

# cutting layout

## For the overlay dress:

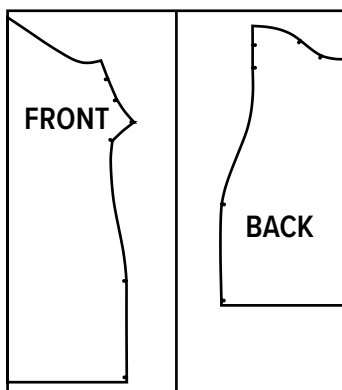
Single layer of 140cm-wide fabric

**Please note:** The pieces of the overlay dress (front and back) may be cut on the fold if your fabric width allows it.



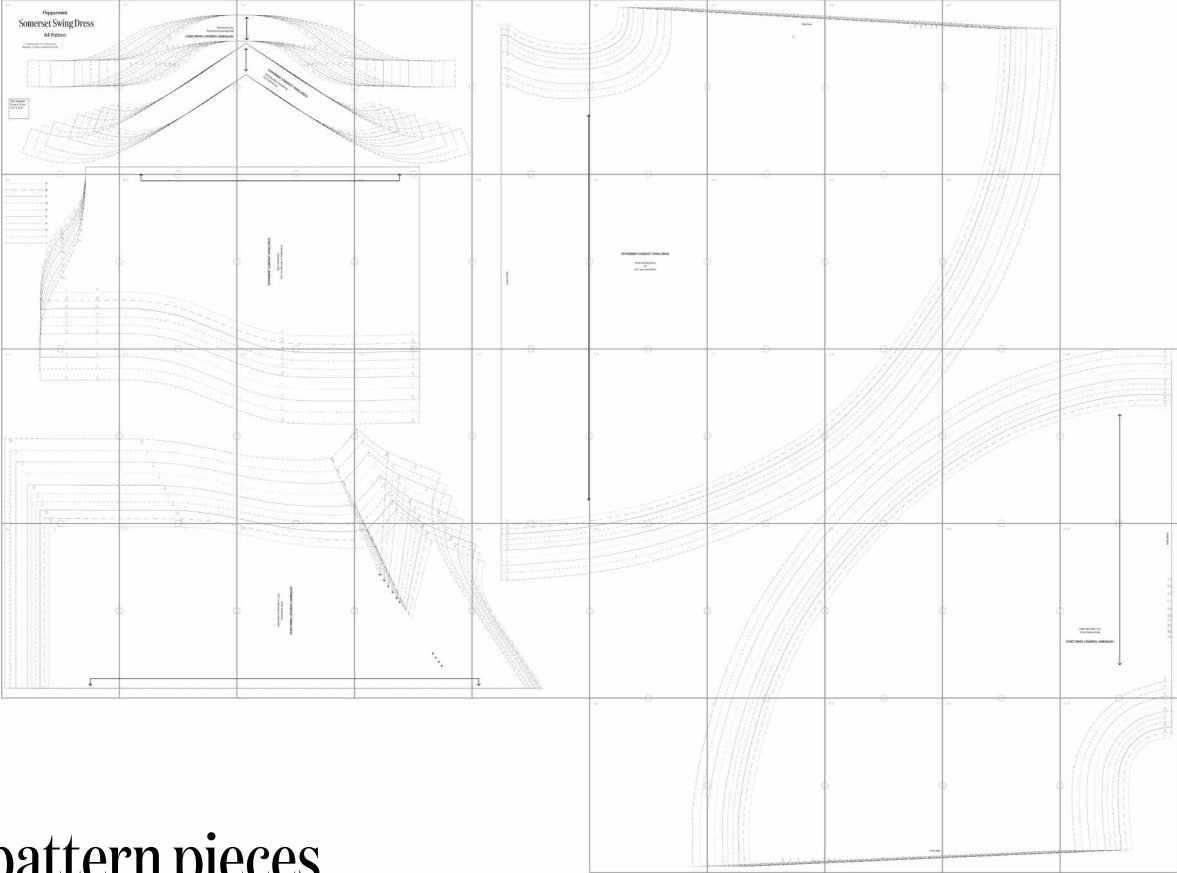
## For the underdress:

Two layers of fabric, cut on the fold

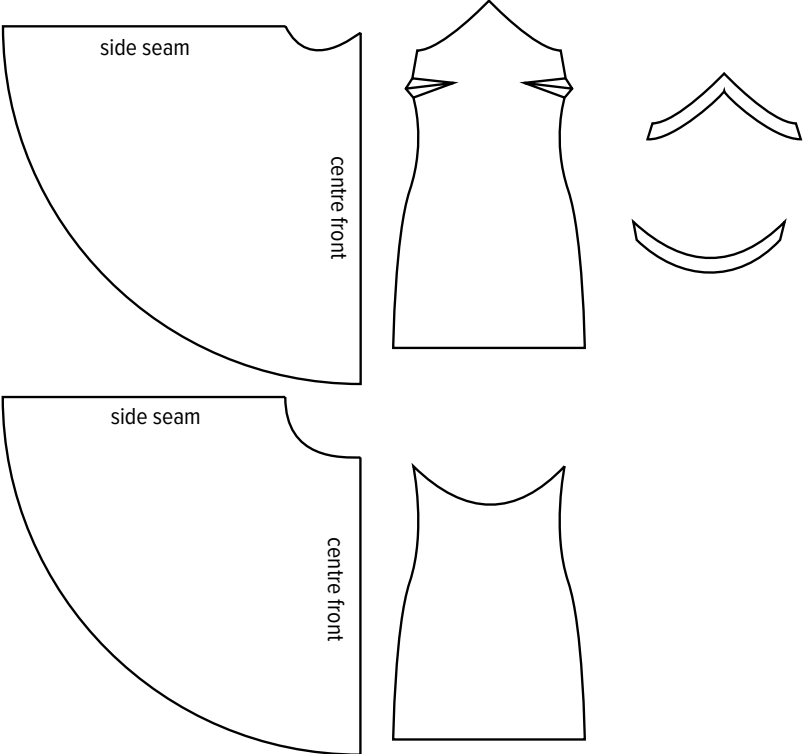


# pdf pattern map

Assemble as shown using instructions below.



## pattern pieces



# sewing instructions

## UNDERDRESS

### STEP 1: APPLY INTERFACING

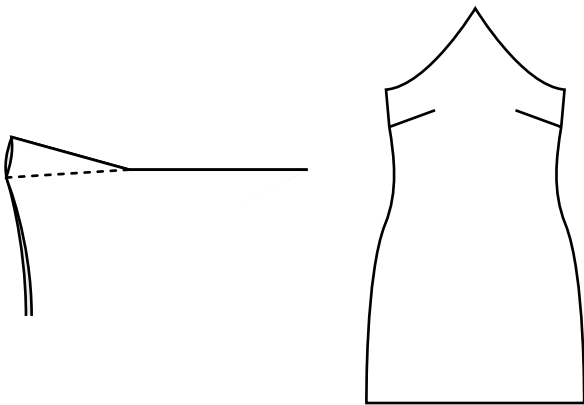
Apply the two pieces of interfacing to the right fabric side of your front and back neckline of your underdress. Please note that the interfacing won't be visible in the finished garment as the overlay dress will cover it.

### STEP 2: STAYSTITCH

Staystitch along the front and back neckline of your underdress and overlay dress, 6mm /  $\frac{1}{4}$ " from the raw edge, to make sure that the neckline will not stretch.

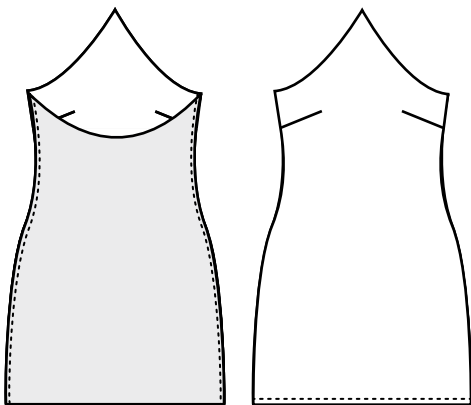
### STEP 3: DARTS

Mark and sew bust darts on the front bodice of the underdress and press towards the bottom hem with an iron. Tip: don't go back and forth at the point of your dart. Instead, leave the thread ends long and knot them twice, then cut the excess thread.



### STEP 4: SIDE SEAMS

Place the front and back of your underdress together with the right fabric sides touching. Sew along the side seams with a 1cm /  $\frac{3}{8}$ " seam allowance. Finish the raw edge with a zigzag or overlocking stitch. Press the seam towards the back of the garment.





### STEP 5: HEM

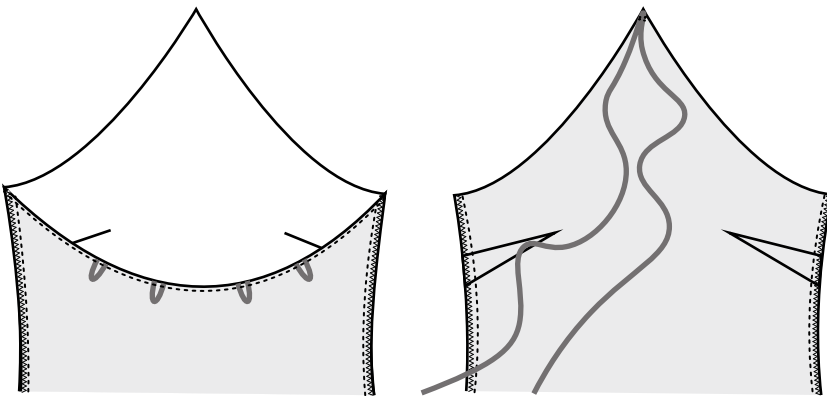
Fold the raw edge over twice by 6mm / ¼” then iron and topstitch along your hem. If you own a rolled hem foot for your sewing machine, you can also use that to hem your underdress.

### STEP 6: ATTACH CORD OR BAND

Now take your cord and cut four 3.5cm / 1.4” pieces. These four short pieces of cord will become four loops at the back of the dress for your straps. Turn your underdress wrong sides out and place the four loops along the back neckline as indicated by the notches in the illustration below. The raw edges of the cord will align with the raw edge of the fabric. Sew the loops down 6mm / ¼” away from the raw edge.

Now take your long cord piece and knot either end. (Tip: thread some beads or other decorations onto your cord before knotting it to add some extra sparkle to your dress.) Then fold the cord in half and place the folded part at the top pointy edge of your centre front. Sew the cord down 6mm / ¼” away from the raw edge.

Well done you! That’s it for the underdress for the moment. Now, we will tackle the overlay circle dress.



# sewing instructions

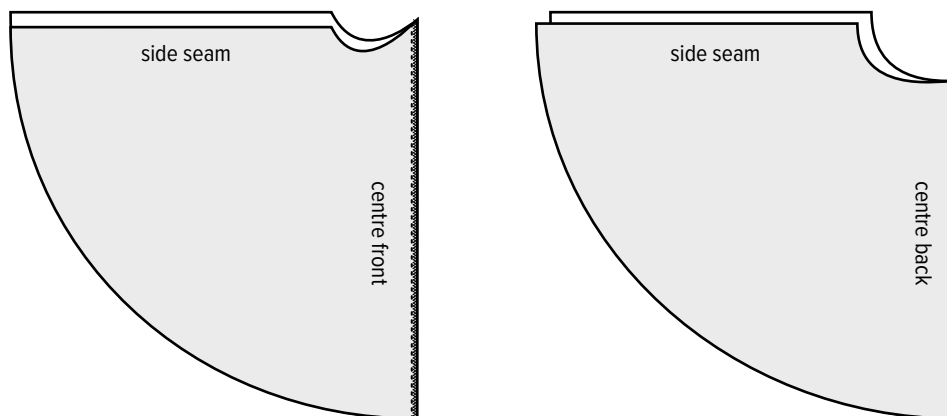
## OVERLAY DRESS

### STEP 7: CENTRE FRONT SEAM *(omit this step if you chose to cut on the fold)*

Take the two front pattern pieces of your overlay dress and place them together with the right fabric sides touching. Sew along the centre front seam with a 1cm /  $\frac{3}{8}$ " seam allowance. Finish the raw edge with a zigzag or overlocking stitch. Press the seam towards one side.

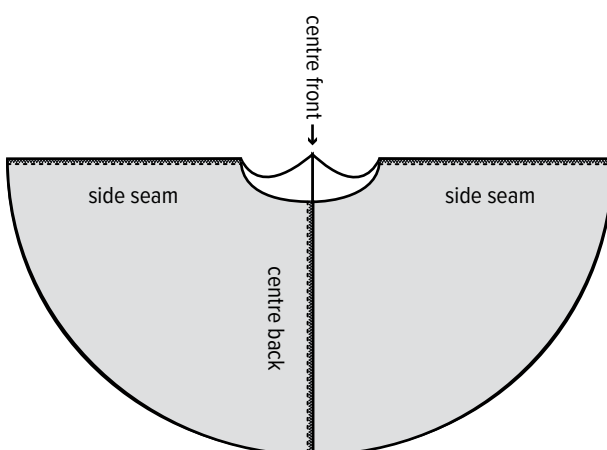
### STEP 8: CENTRE BACK SEAM *(omit this step if you chose to cut on the fold)*

Take the two back pattern pieces of your overlay dress and place them together with the right fabric sides touching. Sew along the centre back seam with a 1cm /  $\frac{3}{8}$ " seam allowance. Finish the raw edge with a zigzag or overlocking stitch. Press the seam towards one side.



### STEP 9: SIDE SEAMS

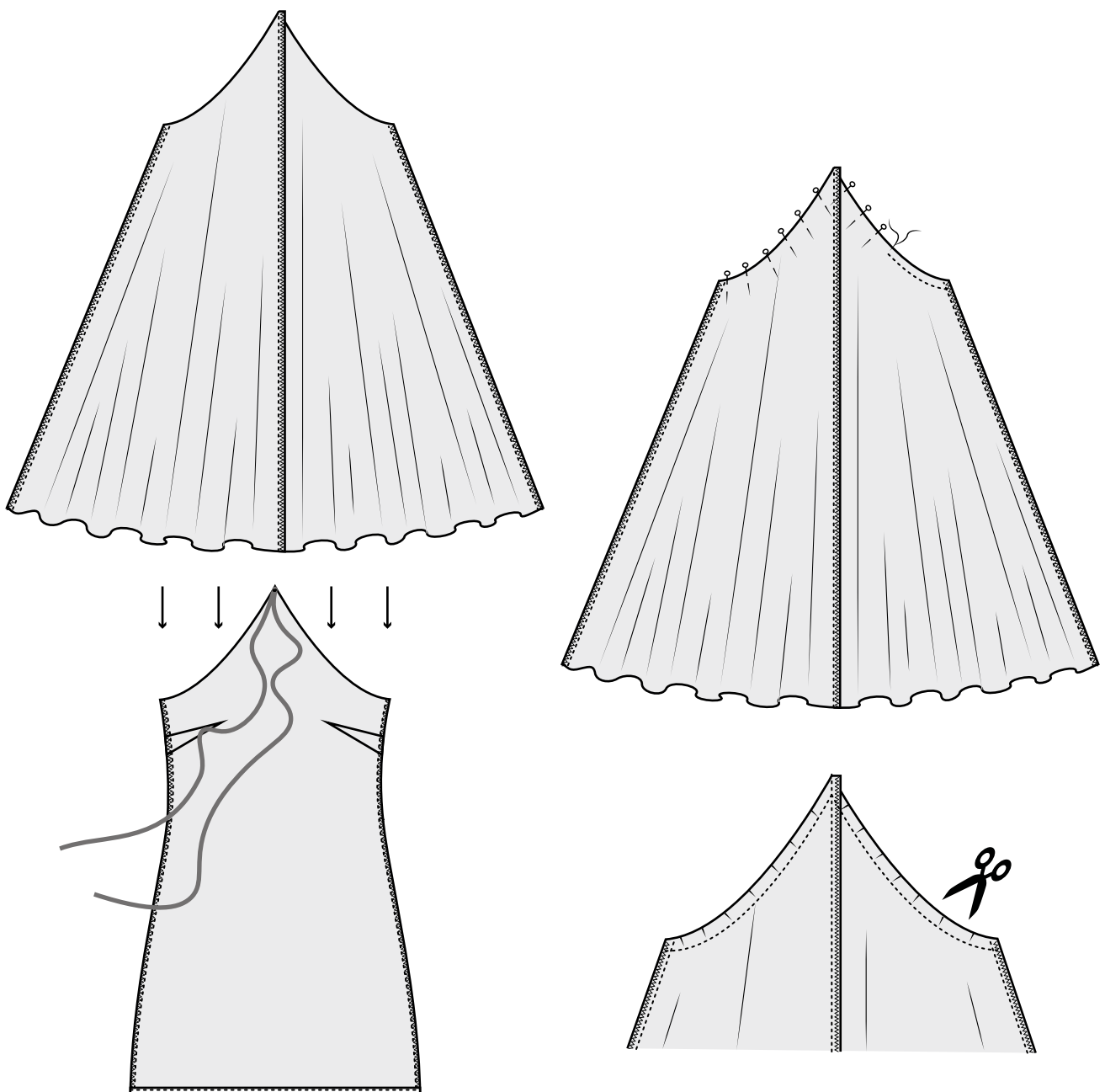
Now take your front and back and place them together with the right sides touching. Sew along the side seams with a 1cm /  $\frac{3}{8}$ " seam allowance. Finish the raw edge with a zigzag or overlocking stitch. Press the seam towards the back of your dress.

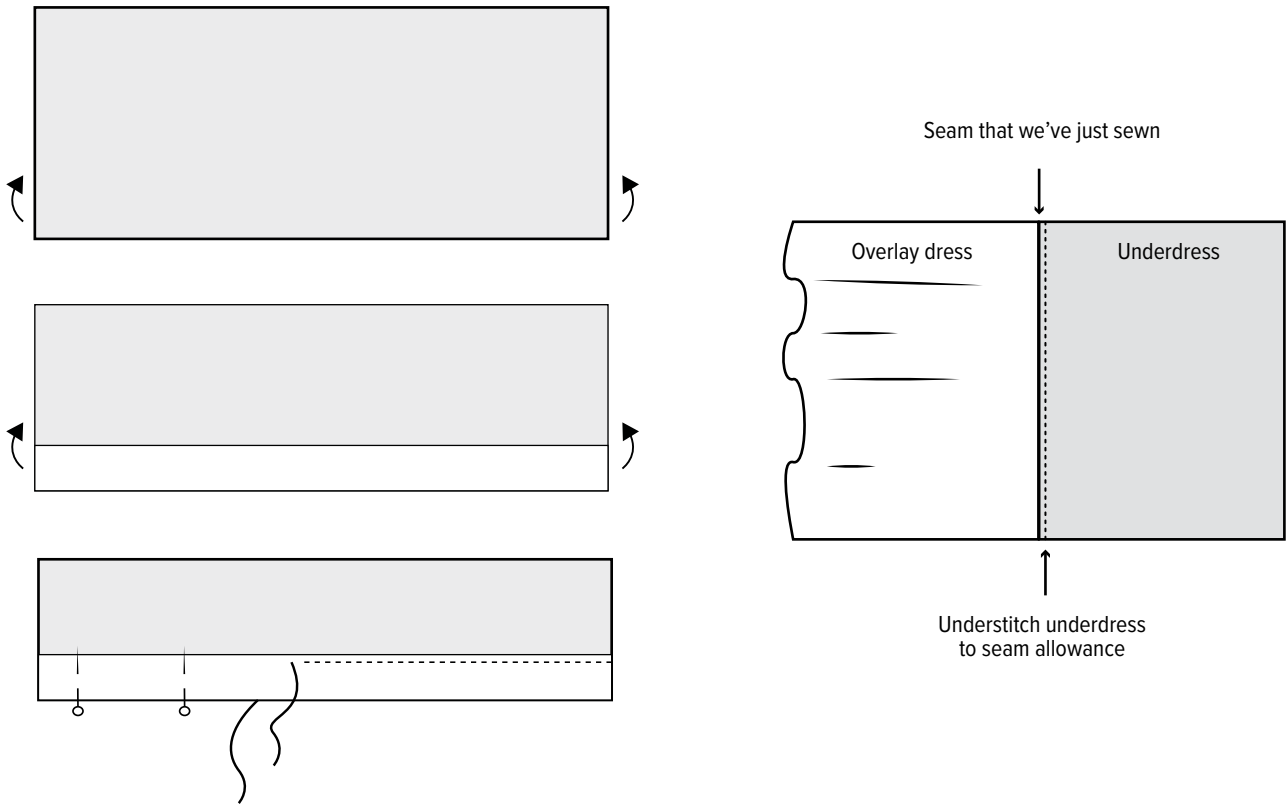


## STEP 10: TOP EDGE

Now take your underdress and your overlay circle dress. This step might be a bit confusing at first. The aim is to attach the overlay circle dress to the underdress in a way that the right fabric sides will both be facing away from the body when wearing the dress. To achieve this, you are going to turn both dresses WRONG sides out. Now place your overlay circle dress around your underdress aligning the neckline. The RIGHT fabric side of your overlay circle dress should now be facing the WRONG fabric side of your underdress.

Align the raw edge matching up all the notches. Use heaps of pins to secure everything into place. Then slowly sew all the way around your neckline with a 1cm /  $\frac{3}{8}$ " seam allowance. Clip into the seam allowance every 2.5cm / 1" to ensure the seam will lay flat. Press the seam towards the underdress. Understitch the underdress to the seam allowance. Sew from the WRONG side of your underdress about 3mm /  $\frac{1}{8}$ " away from the seam line. You cannot go all the way to the points, just go as far as possible. This step will give the edge a neat, professional finish.



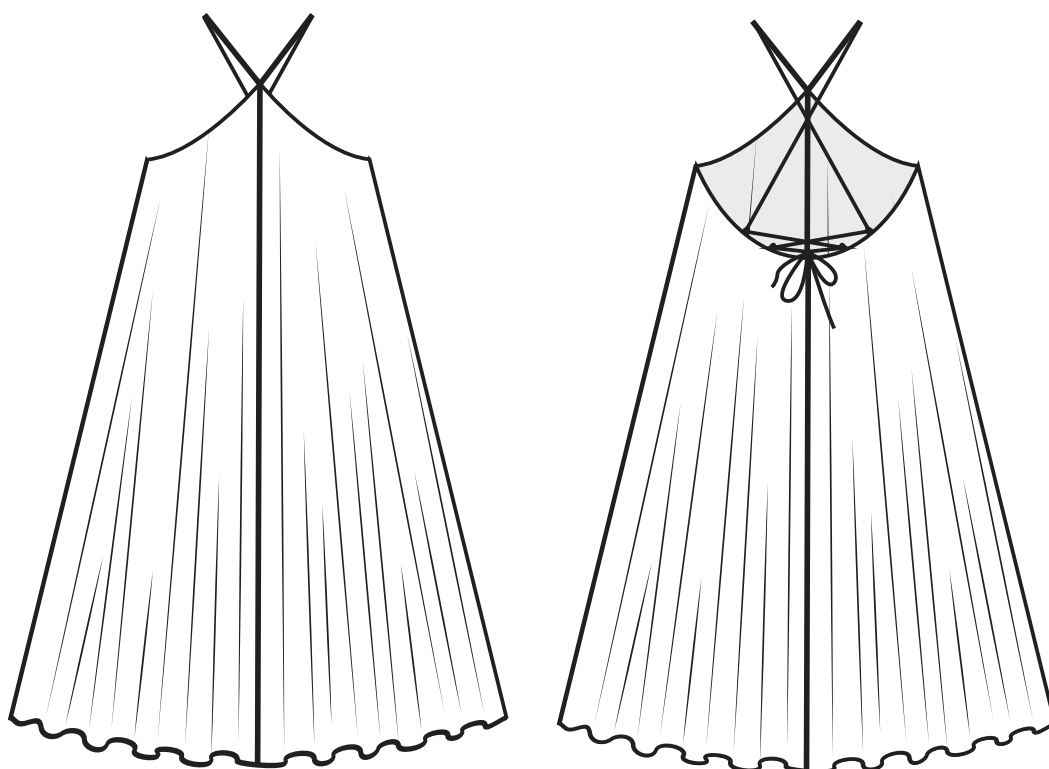


## STEP 11: HEM BOTTOM

You are almost there! Now it's time to hem your beautiful dress. I recommend trying on your dress now and getting someone else to help you check your desired hem length. It is also a good idea to measure from the ground up to your hem to make sure the hem is even. Because the hem is cut on a curve, it can happen that some parts of the fabric stretch more than others.

Now we'll do a double-turned hem to finish off your dress. Fold the raw edge over twice by 6mm / ¼". Press your hem with an iron, using a temperature setting suitable for the fabric, then immediately pin your hem in place with sewing pins. Sew your hem to complete your garment.

Yay, you should be so proud. Give your brand new party dress a twirl!



Hurrah! You just made your very own swing dress!  
You should be very chuffed.

The *Peppermint* Somerset Swing Dress was created  
in collaboration with Jasmin Henzi from  
Sewing Patterns By Masin! Find out more at  
**[sewingpatternsbymasin.com](http://sewingpatternsbymasin.com)**

*This pattern can be purchased from the [Peppermint website](http://Peppermint website) as a digital  
download. Current subscribers will get the printed version **FREE!***