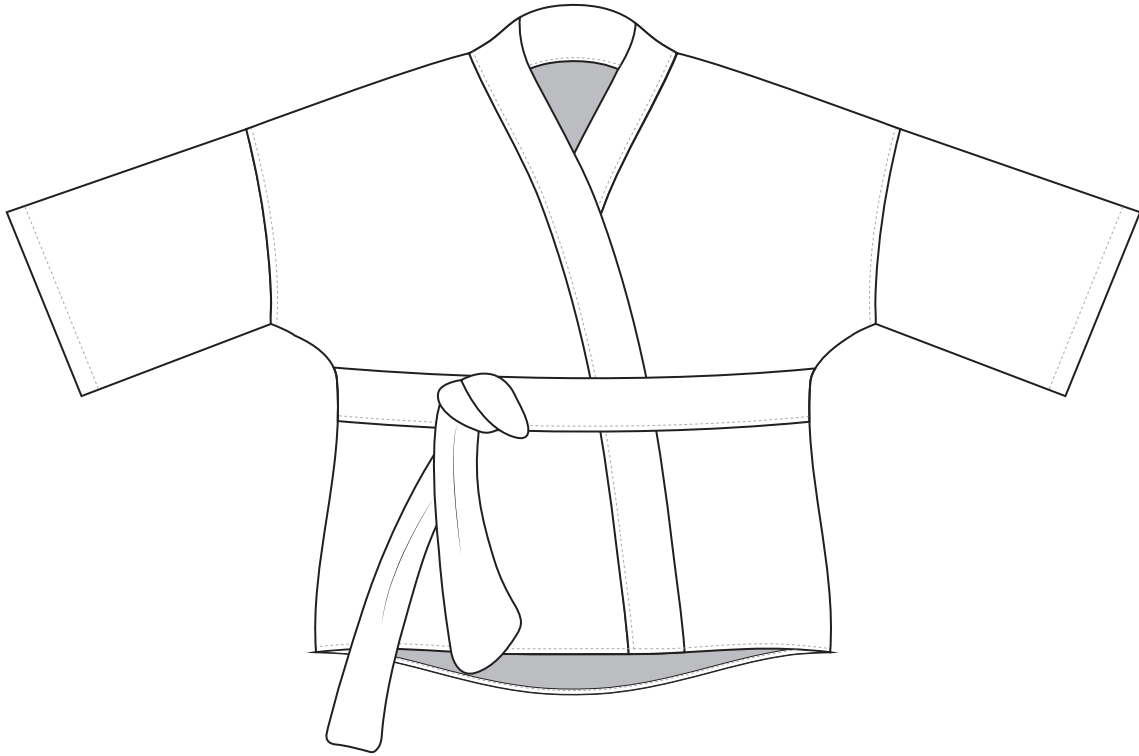


# ROBE JACKET



Common Stitch.



# Peppermint

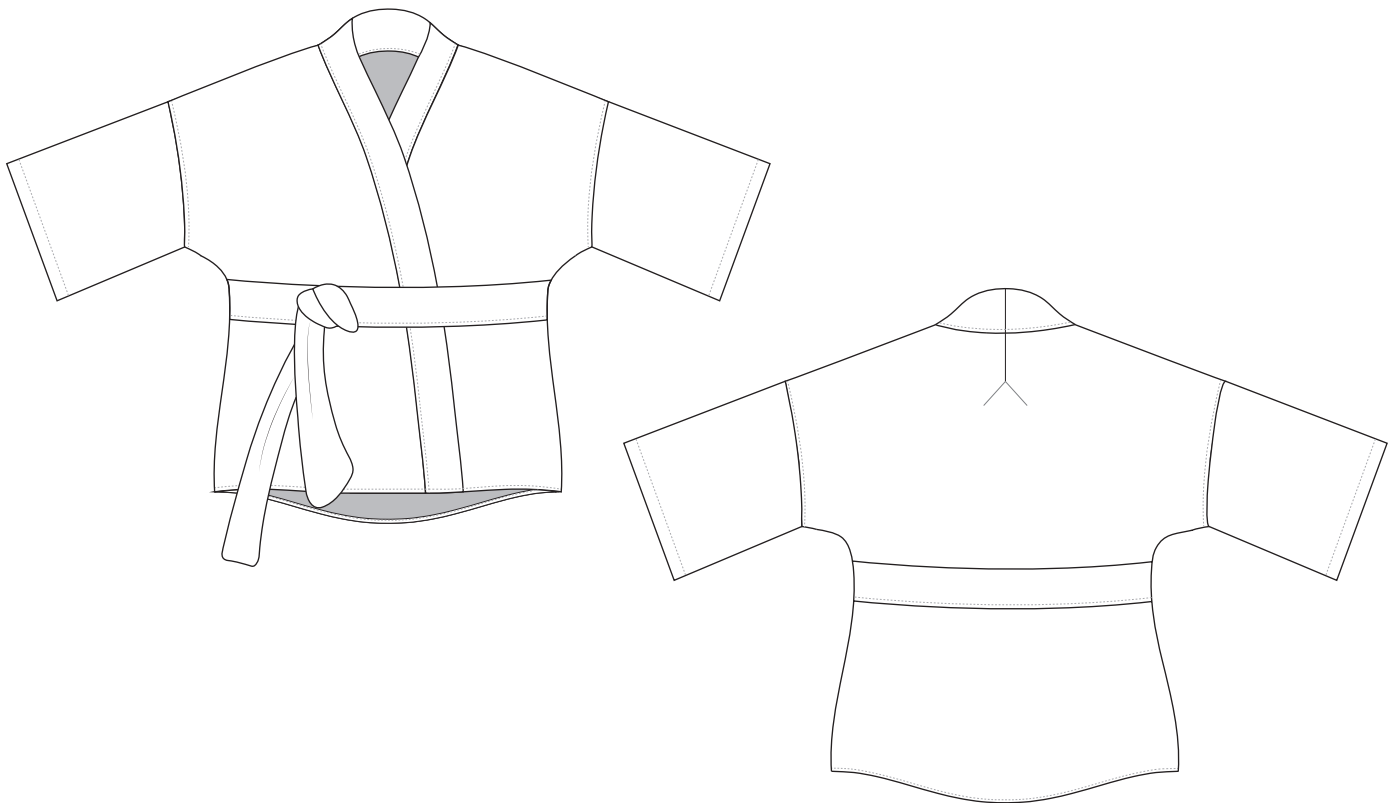
ISSUE 45

## THE ROBE JACKET

*This simple, versatile robe jacket features a drop shoulder with straight sleeves, an inverted box pleat at the back, a curved back hem and a fabric belt. It's the perfect transeasonal, multipurpose piece – try pairing it with jeans and a tee, layering it over your cossie while at the beach or adding length to create a long duster jacket in a heavier fabric for those cooler days. Suitable for beginner sewists.*

Find us on Instagram @peppermintmagazine and @common\_stitch and tag your photo with #peppermintrobejacket

Love your Robe Jacket? Visit [www.peppermintmag.com/sewing-school/](http://www.peppermintmag.com/sewing-school/) to see the rest of our free patterns!



# ROBE JACKET

---

## PATTERN PIECES

1_Bodice Front	Cut One Pair
2_Bodice Back	Cut One on Fold
3_Sleeve	Cut One Pair
4_Collar	Cut One Pair
5_Belt	Cut Two
6_Belt Loops	Cut Two

## REQUIRED NOTIONS

Matching Thread

## SEWING LEVEL

Beginner

## SUGGESTED FABRICS

Light to medium-weight fabrics; fabrics which drape well.  
Linen, cotton, hemp + other natural fibres

## EQUIPMENT REQUIRED

Sewing machine  
A good pair of sewing scissors  
Pins or pattern weights  
Markers chalk

## SEAM ALLOWANCES

All seams have a 1cm (0.4 inch) seam allowance included in the pattern pieces

## SIZE CHART

Our sizing is based on the Australian standard size range. Please check the below body measurements closely.

SIZE	A	B	C	D	E
AUS	6 - 8	10 - 12	14 - 16	18 - 20	22 - 24
HIGH BUST	71 - 76cm	81 - 86cm	91 - 96cm	103.5 - 111cm	118.5 - 126cm
BUST	76 - 81cm	86 - 91cm	96 - 101cm	108.5 - 116cm	123.5 - 131cm
WAIST	61 - 66cm	71 - 76cm	81 - 86cm	93.5 - 101cm	108.5 - 116cm

## COMPLETED GARMENT MEASUREMENTS

SIZE	A	B	C	D	E
WAIST	120cm	129.6cm	139.2cm	148.8cm	158.4cm
LENGTH*	80.3cm	82.7cm	85.1cm	87.5cm	89.9cm

\*Centre back neck to hem

# ROBE JACKET

## Cutting Instructions

### FABRIC REQUIREMENTS

All of our fabric requirements are based on a standard 1.4m wide fabric (1.5 yards)

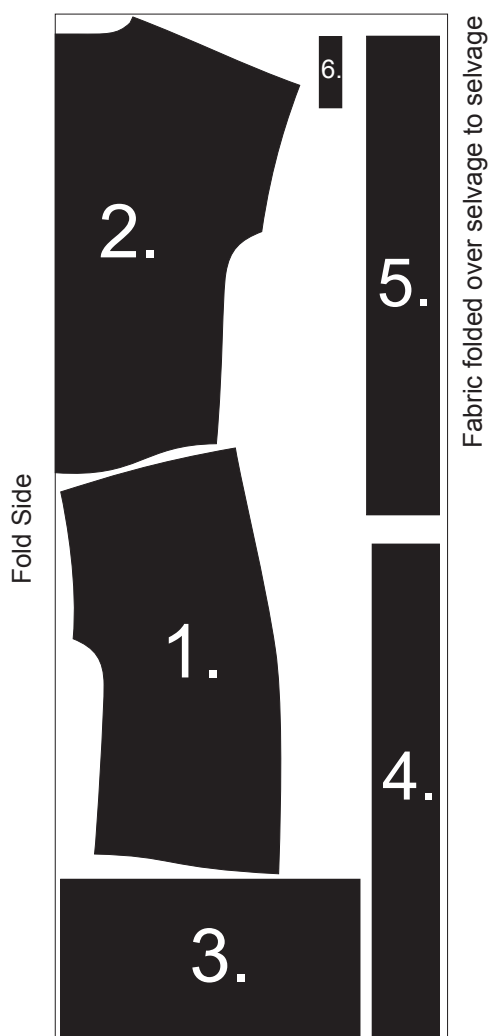
SIZE	A	B	C	D	E
METERAGE	1.9m	1.9m	2.3m	2.3m	2.4m

### NOTE

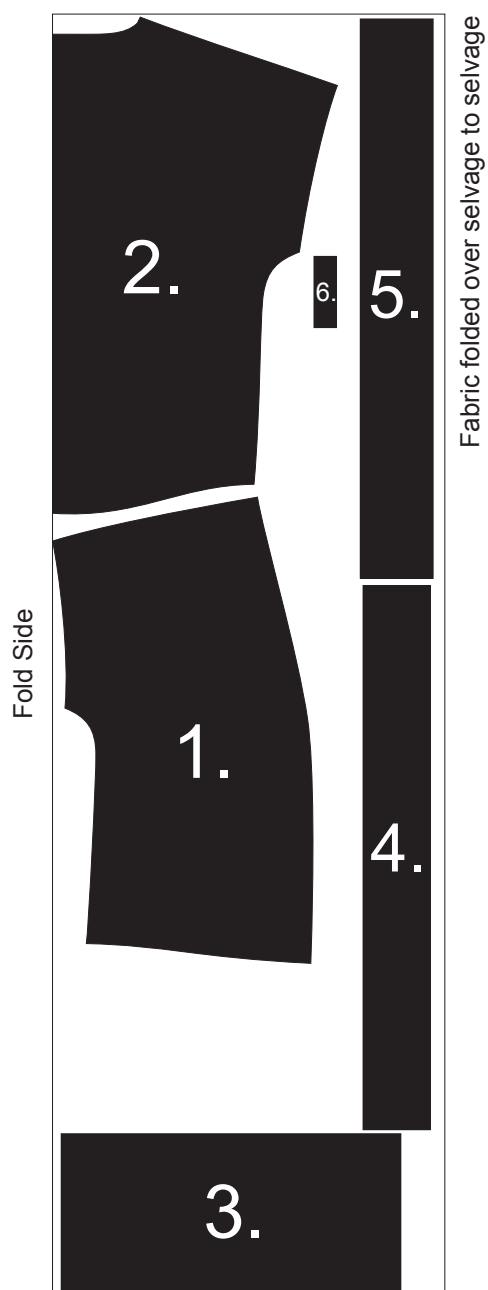
Fabric is to be inside out.

Layout and meterage may vary depending on fabric selection.

SIZES A + B



SIZES C, D + E



# ROBE JACKET

## Printing Instructions

WITHIN THIS PACKAGE YOU HAVE  
TWO PRINTING OPTIONS

### COPY SHOP PRINT

This will contain two (2) A0 black and white pages (pdf)

Take this pdf to your copy shop / office works and get them printed as per below;

- \_ Black & white
  - \_ Plotter printer
  - \_ 100% scale
- (this will be your cheapest option)

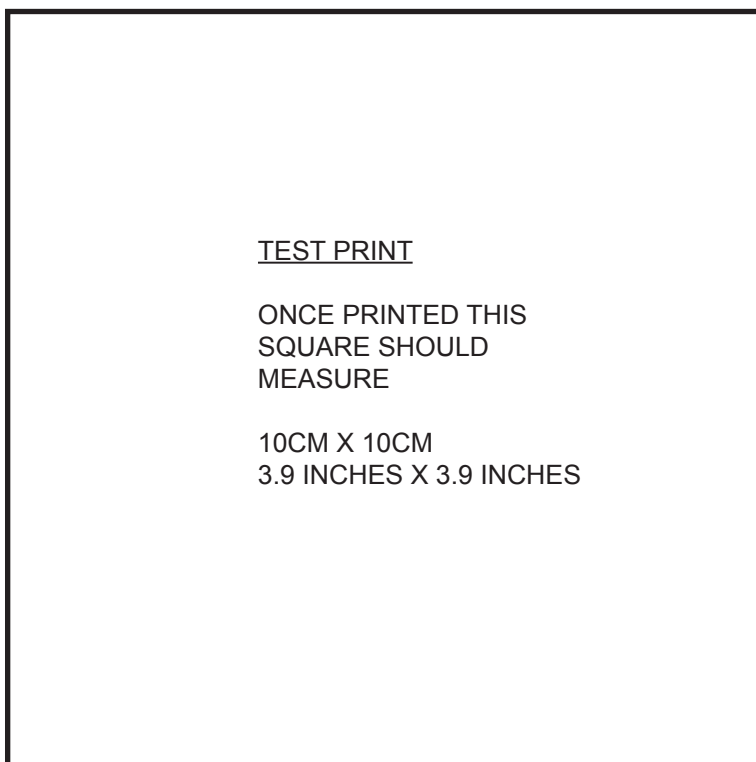
### PRINT AT HOME

This will contain a combined A4 format / US Letter Paper format that you can print on your home printer & stick together to make the overall pattern - 43 pages total.

*It is exactly the same as the A0 prints, it has just been broken down into multiple smaller sheets.*

- Step 1** - Print the below 10cm x 10cm (3.9 inch x 3.9 inch) test square (Print at 100% scale)
- Step 2** - Print all sheets of the 'print at home' pdf file (colour or b&w)
- Step 3** - Trim the pages so there is no white border around the boxes (a guillotine is useful here)
- Step 4** - Use the printing layout guide below and the numbers & letters indicated on the individual pages and stick the sheets together
- Step 5** - Cut out your pattern pieces

### TEST PRINT

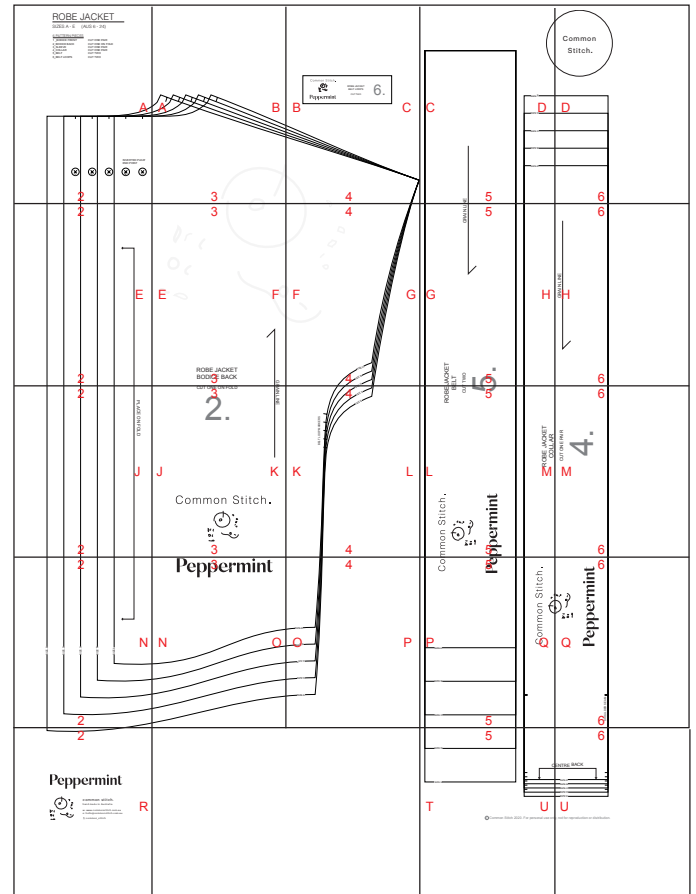
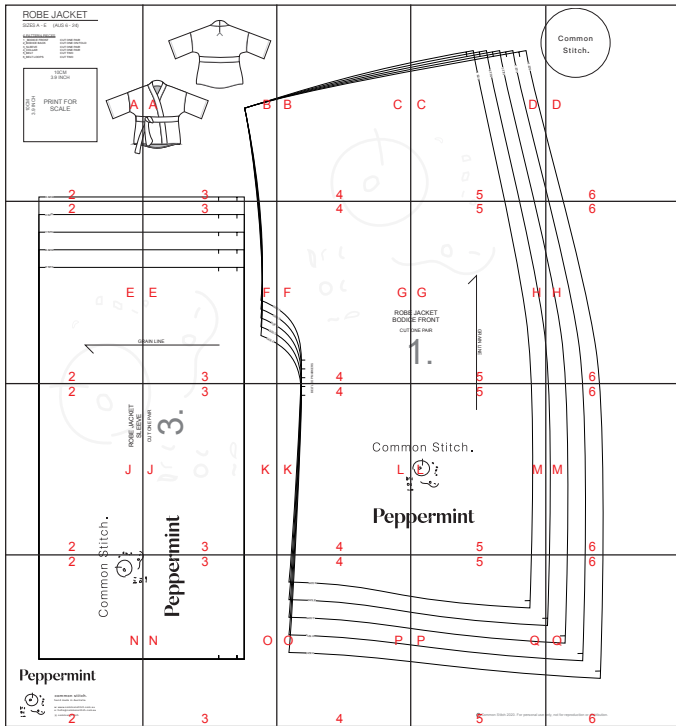


# ROBE JACKET

## Printing Instructions

PRINT AT HOME LAYOUT

A4 / US LETTER - 43 PAGES



## BEFORE YOU START YOUR PROJECT

Please read all instructions prior to starting work on your garment.

We recommend pre-washing all your fabrics and trims before sewing, to allow for any shrinkage.

Transfer all pattern markings to the wrong side of the fabric before removing the pattern pieces unless indicated otherwise.

Seam allowances for all garment pieces are 1cm (0.4 inch) unless indicated otherwise.

Neaten your seams + give your garments a longer life by either using an overlocker or a regular zig-zag stitch on your seams.

We recommend pressing the seams as you go.

## GLOSSARY OF TERMS

### BACK STITCH

at the beginning and end of each line of continuous stitches sew four stitches forward and four stitches backwards to secure the stitch.


### PIN STITCH


a finishing stitch sewn on the right side of the fabric very close to the edge as a decorative feature.

### TOP STITCH

a continuous row of stitches on the right side of a garment as a decorative feature.

## PATTERN SYMBOLS

 place on fabric fold line

 grain direction of fabric

 Right Side of Fabric

 Wrong Side of Fabric

# ROBE JACKET

## Instructions

### TIPS

Iron all seams once sewn to get a crisp finish.

### STEP ONE

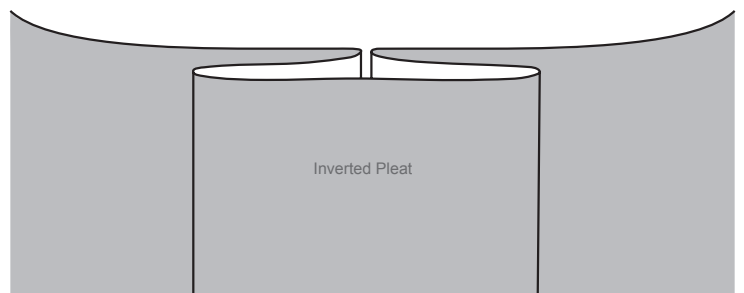
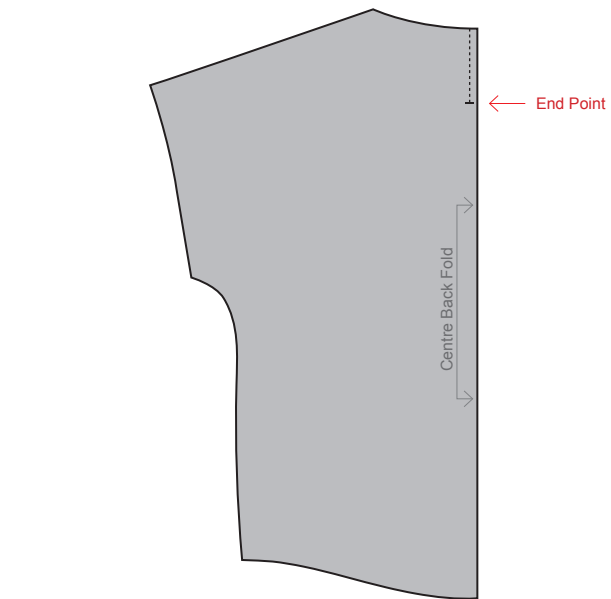
#### *Inverted Pleat*

Make sure to mark the pleat nicks, using your awl or a pin to mark the end point.

To fold your inverted pleat, line the nicks up at the centre back - right side to right side, so that your marks are on top of each other.

Sew from the nicks to the end point. Remember to back stitch here as you don't want the pleat to come undone.

Press the centre back fold so that it is on top of your stitching (This will later get stitched down in place when you add on the collar).

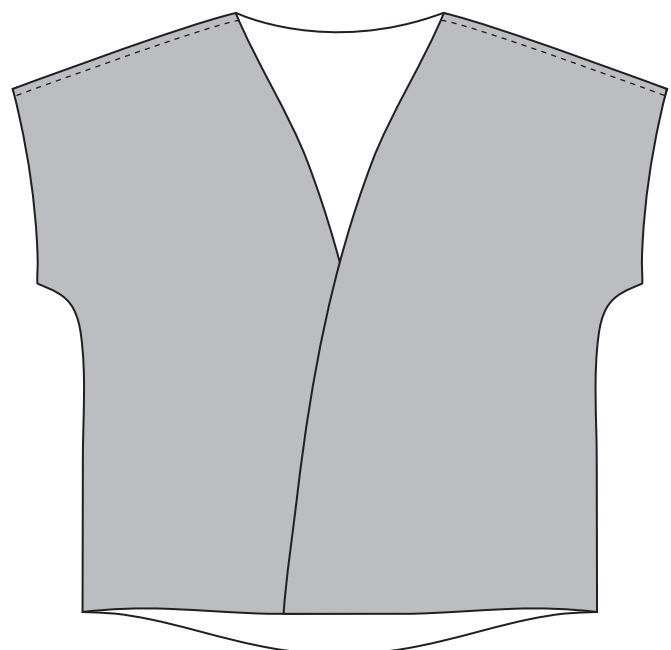


### STEP TWO

#### *Joining the fronts to the back*

Join the two front pieces, onto the back piece, by stitching along both shoulder seams. Make sure both right sides of fabric are facing each other.

Overlock / Zig-Zag to finish.



### SEAM ALLOWANCES

All seams have a 1cm (0.4 inch) seam allowance included in the pattern pieces.





# ROBE JACKET

## Instructions

### STEP THREE

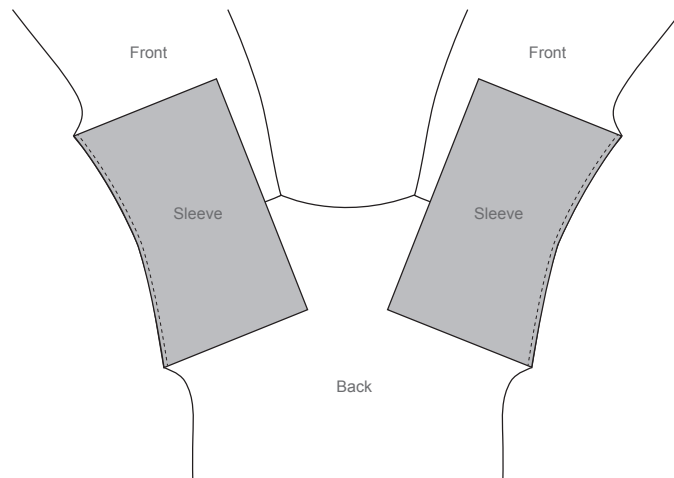
#### *Sewing on the sleeves*

Sew the sleeve pieces onto the bodice, right side to right side. Overlock / Zig-Zag to finish.

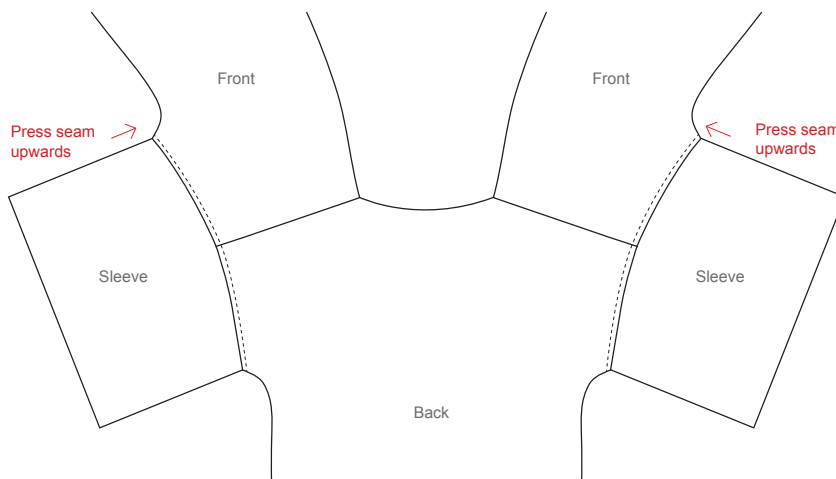
Turn the garment so the right side is facing upwards and top stitch along the shoulder seam - making sure to press the seam allowance upwards towards the shoulder.

While the sleeve is still open, press the sleeve hem up 1cm (0.4 inch) and then press up a further 2.5cm (1 inch). Pin in place (this will get sewn up later).

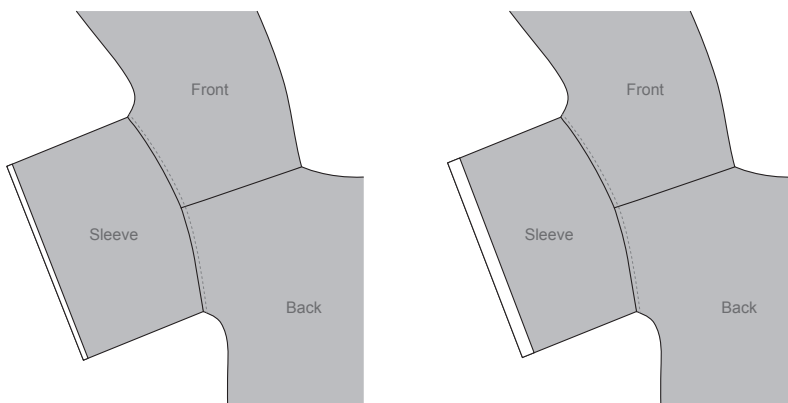
### ATTACH



### TOP STITCH



### PRESS



Press 1cm (0.4 inch)

Press 2.5cm (1 inch)

### SEAM ALLOWANCES

All seams have a 1cm (0.4 inch) seam allowance included in the pattern pieces.



# ROBE JACKET

## Instructions

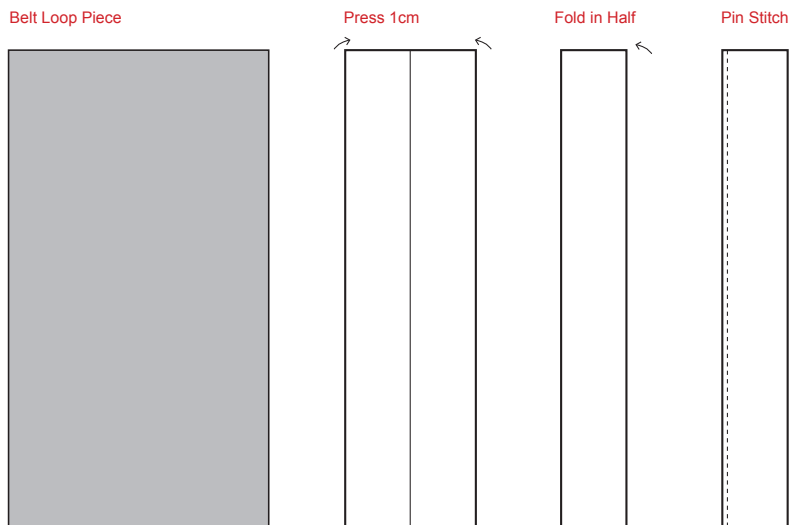
### STEP FOUR

#### *Making the belt loops*

Press both long edges of the belt loops over 1cm (0.4 inch).

Then fold in half lengthways

Pin stitch along the long edge

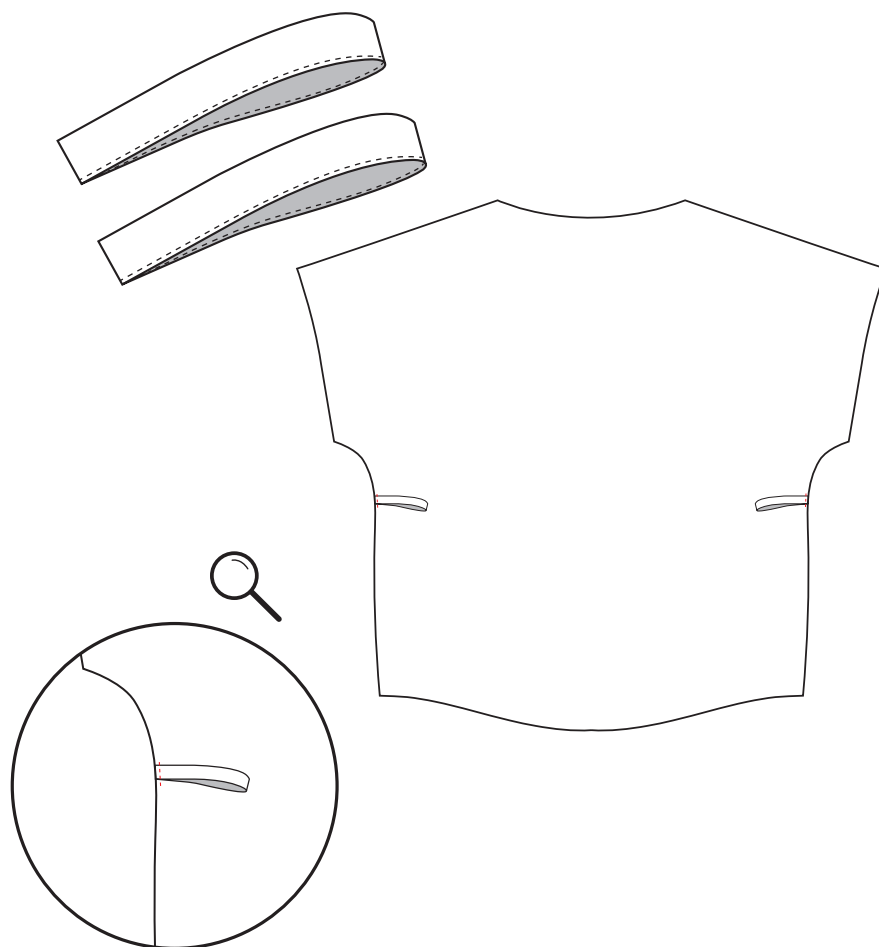


### STEP FIVE

#### *Attaching the belt loops*

Fold the belt loops in half and line them up with the belt loop nicks on the back of the robe (facing inwards, on the right side of the fabric).

Stitch into place - make sure to back stitch so that they are secure.



### SEAM ALLOWANCES

All seams have a 1cm (0.4 inch) seam allowance included in the pattern pieces.



# ROBE JACKET

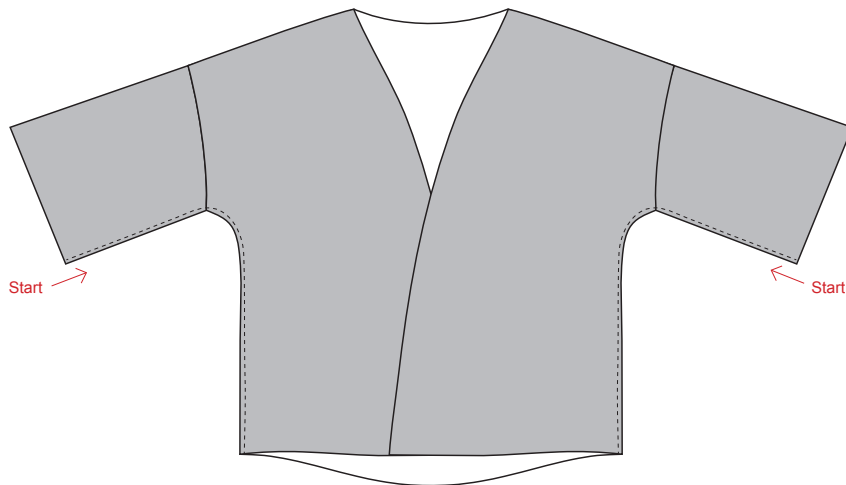
## Instructions

### STEP SIX

#### *Closing the side seams*

With fabric right side to right side, close the side seams - ensuring that the belt loops are encased.

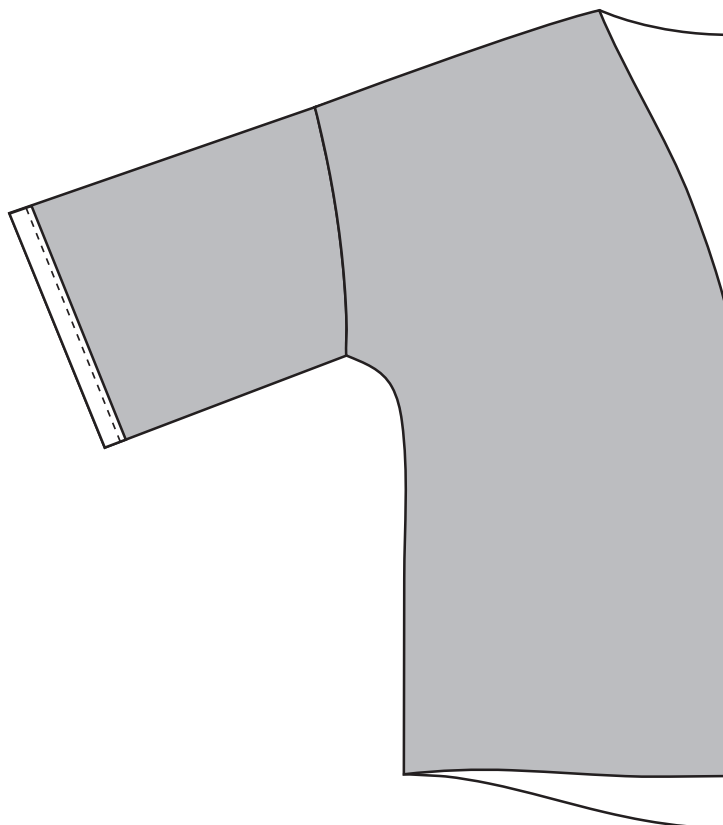
Start sewing at the sleeve hem (make sure you un-fold the sleeve hem here), and sew down to the body hem - making sure to curve under the arm.



### STEP SEVEN

#### *Hemming the sleeve*

Using the hem allowance that we pressed up in step three, top stitch both sleeve hems for a neat finish.



### SEAM ALLOWANCES

All seams have a 1cm (0.4 inch) seam allowance included in the pattern pieces.



# ROBE JACKET

## Instructions

### STEP EIGHT

#### Collar

Overlock / Zig-Zag one short end on each of your collar pieces.

Sew together the two short ends of the opposite pieces, right side to right side.

Press the seam open.

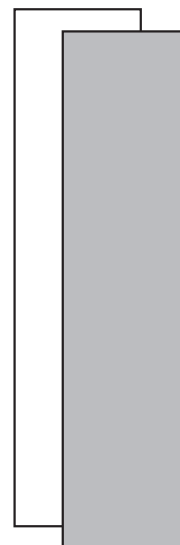
Press both long edges in 1cm (0.4 inch)

Fold the collar piece in half lengthwise and press, ensuring the right side of the fabric is on the outside.

Overlock



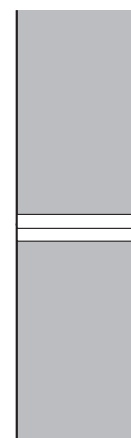
Right sides Together



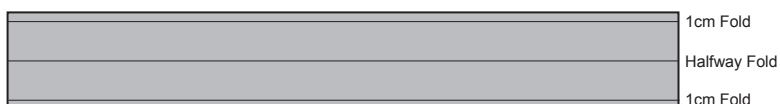
Join Together



Press Seam Open



Collar Piece



### SEAM ALLOWANCES

All seams have a 1cm (0.4 inch) seam allowance included in the pattern pieces.



Wrong Side of Fabric



Right Side of Fabric

# ROBE JACKET

## Instructions

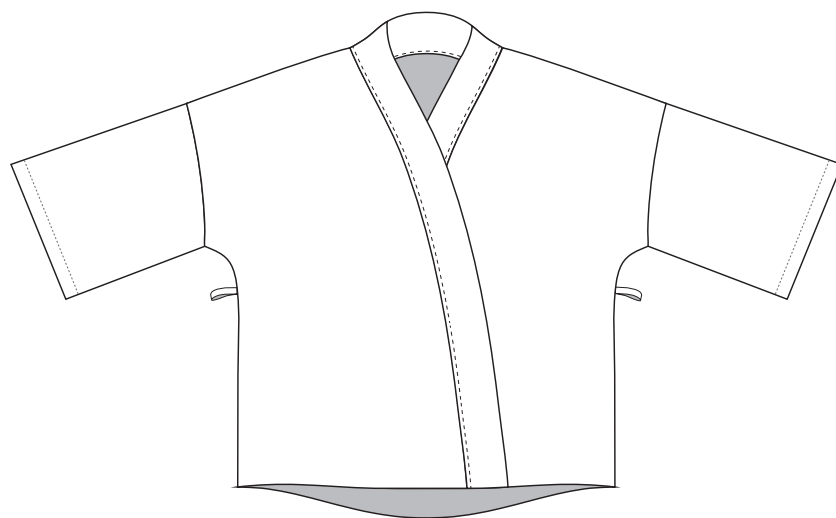
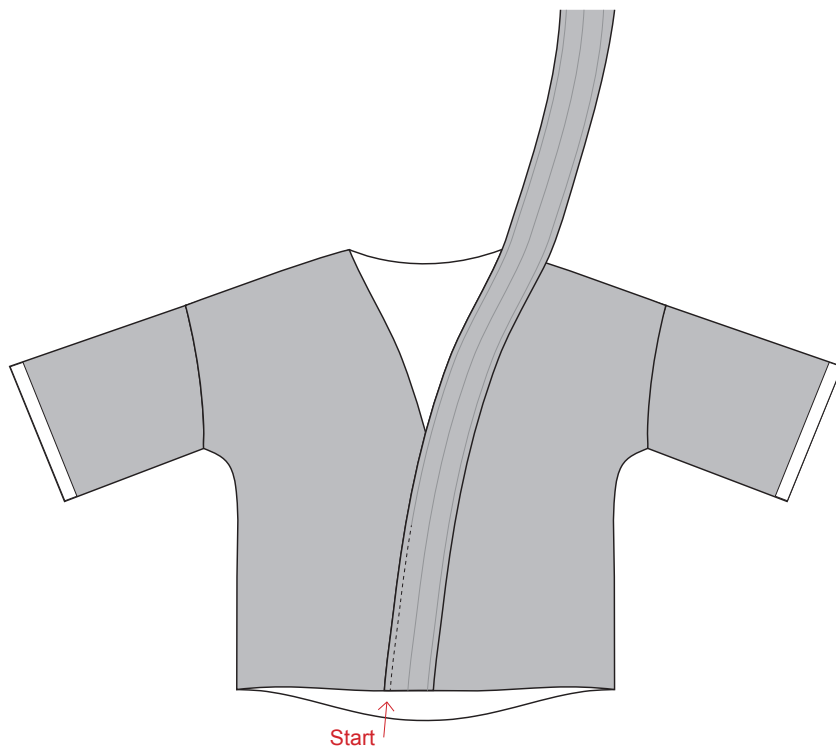
### STEP NINE

#### *Attaching the collar on*

On the wrong side of your robe, sew on the right side of your collar. Unfold the pressed collar and stitch along the first 1cm (0.4 inch) fold, with the raw edges lining up. Stitch all the way up one side, around the neck, and back down the second side.

Make sure the right side of your collar fabric is facing the inside of the robe (right side collar to wrong side robe fabric).

Fold the collar over to the right side of your robe, folding in the halfway fold. With the 1cm (0.4 inch) fold still folded under, pin stitch the collar onto the robe, hiding the previous stitching.

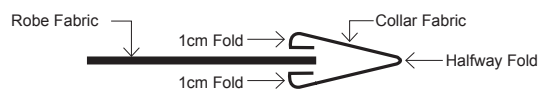


### SEAM ALLOWANCES

All seams have a 1cm (0.4 inch) seam allowance included in the pattern pieces.



#### Section Detail



# ROBE JACKET

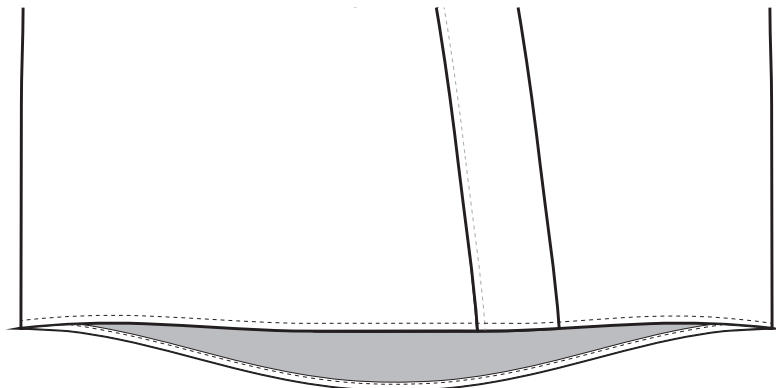
## Instructions

### STEP TEN

#### *Hemming the robe jacket*

Overlock around the base of your robe jacket, including the ends of the collar you just attached.

Press up 1cm (0.4 inch) and top stitch.



### STEP ELEVEN

#### *Sewing the Belt*

Overlock / Zig-Zag one short end on each of your belt pieces.

Sew together the two short ends of the opposite pieces, right side to right side.

Press the seam open

Press both long edges in 1cm (0.4 inch)

Press both short edges in 1cm (0.4 inch)

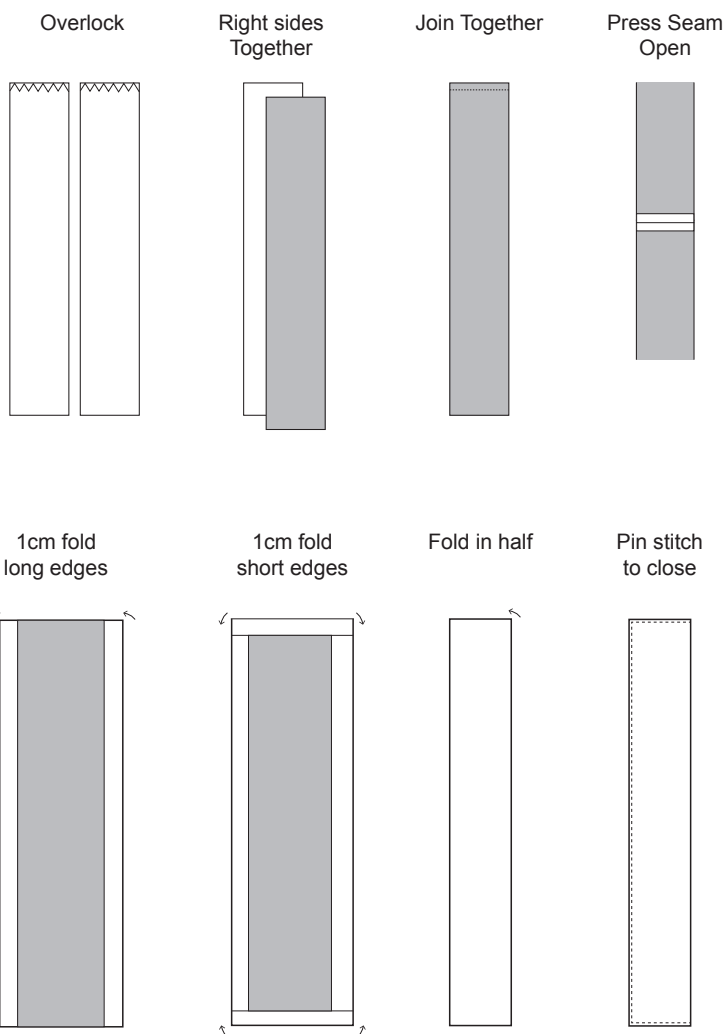
Then fold in half lengthways

Pin stitch along the three edges to close

Thread through your belt loops and you've finished!

#### SEAM ALLOWANCES

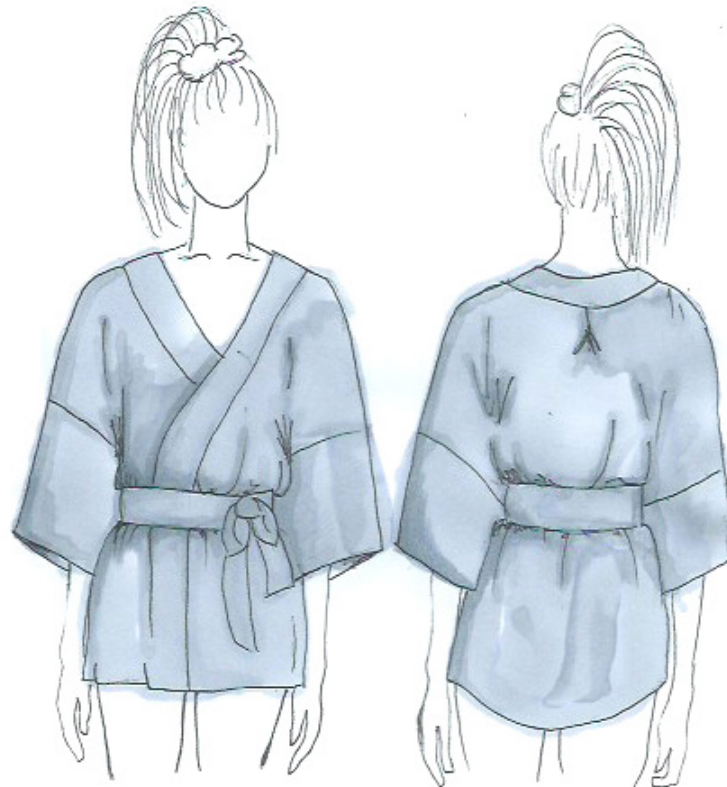
All seams have a 1cm (0.4 inch) seam allowance included in the pattern pieces.



Common Stitch.



# Peppermint



**This pattern is for personal use only. Not to be used for commercial purposes.**

Download of this pattern entitles you to print and copy the pattern for individual home use only.  
You can make the garment for yourself or as a gift.

It does not entitle you to print, copy or distribute the pattern to others, whether you profit from it or not, nor to sell garments that you have made from this sewing pattern.

Thank you for respecting the rights of the designer.

Copyright 2020 Common Stitch.



common stitch.

hand made in Australia

w: [www.commonstitch.com.au](http://www.commonstitch.com.au)  
e: [hello@commonstitch.com.au](mailto:hello@commonstitch.com.au)

📷 [common\\_stitch](https://www.instagram.com/common_stitch)