

# IN THE FOLDS

in collaboration with  
**Peppermint** MAGAZINE

## EVERYDAY DRESS SEWING PATTERN

FEEL FREE TO HACK THIS PATTERN, ADD TO THIS PATTERN, LOVE THIS PATTERN AND TO MAKE IT OVER & OVER BUT PLEASE REMEMBER THAT IT'S FOR PERSONAL USE ONLY.

HAPPY SEWING!

© Emily Hundt

### PATTERN SIZE KEY

- SIZE 1
- - - - - SIZE 2
- ..... SIZE 3
- ..... SIZE 4
- SIZE 5

We're super excited to bring you these patterns in partnership with the lovely people at **The Fabric Store**. With a passion for all things sewing, they stock an incredible range of fabrics - think quality linen, silk, cotton, minky and even leather - at their Sydney, Melbourne, Brisbane, Adelaide and New Zealand stores, as well as a small selection online.

*The Fabric Store*

### PATTERN SYMBOL KEY

- NOTCH
- || DOUBLE NOTCH
- ⊙ DRILL HOLE
- ⊙ BUTTON HOLE
- ⊙ BUTTON PLACEMENT
- ✕ BUTTON PLACEMENT
- CUTTING LINE
- STITCH LINE
- ↔ GRAINLINE
- ↔ PLACE PATTERN ON FOLD
- LENGTHEN / SHORTEN LINE

PLEASE NOTE: SEAM ALLOWANCES ARE INCLUDED AND ARE 1.2cm (½in) UNLESS OTHERWISE STATED (IN INSTRUCTIONS).

SHARE YOUR MAKES

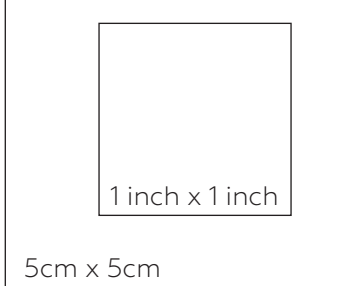


#pepperminteverydaydress

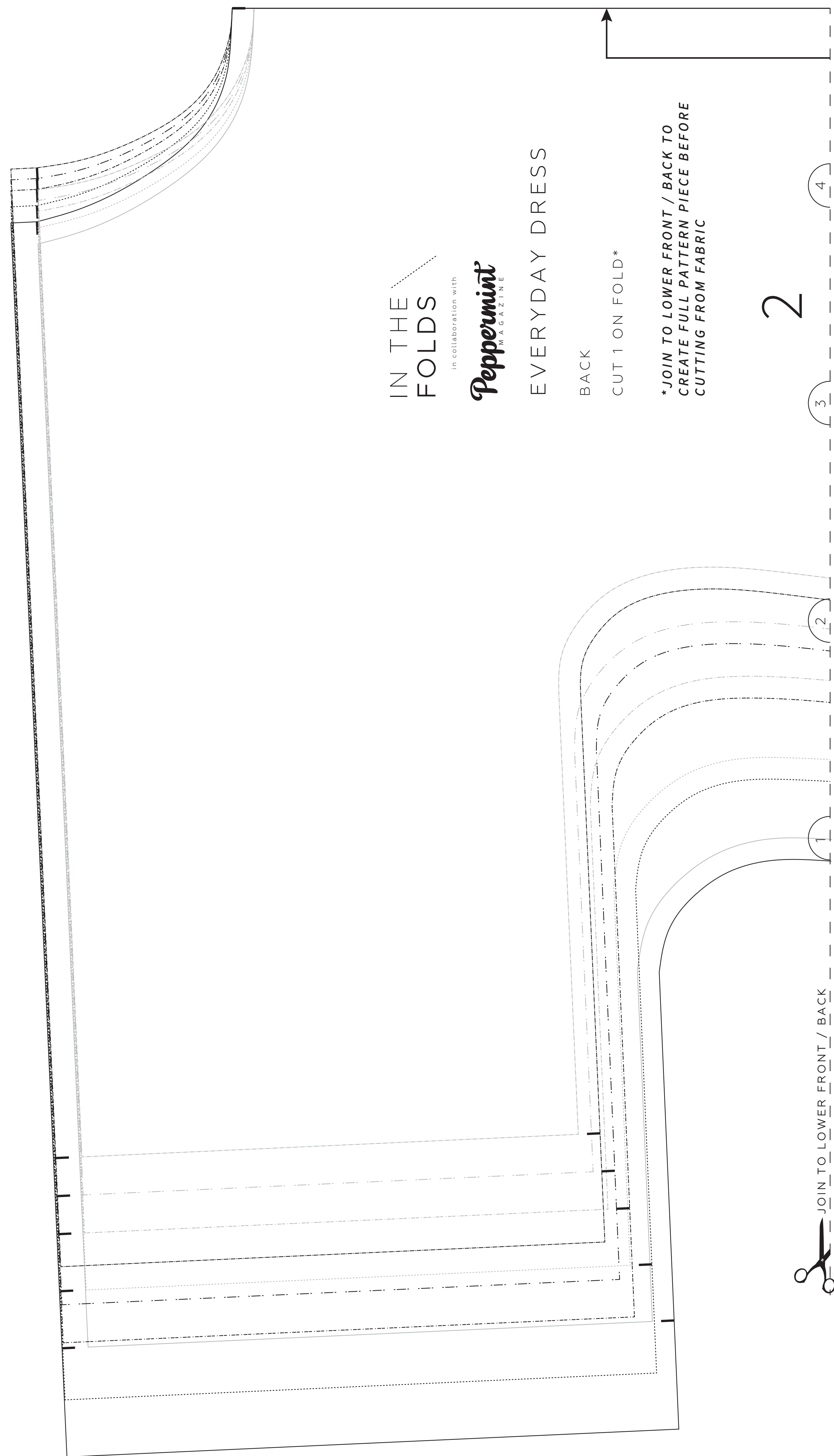
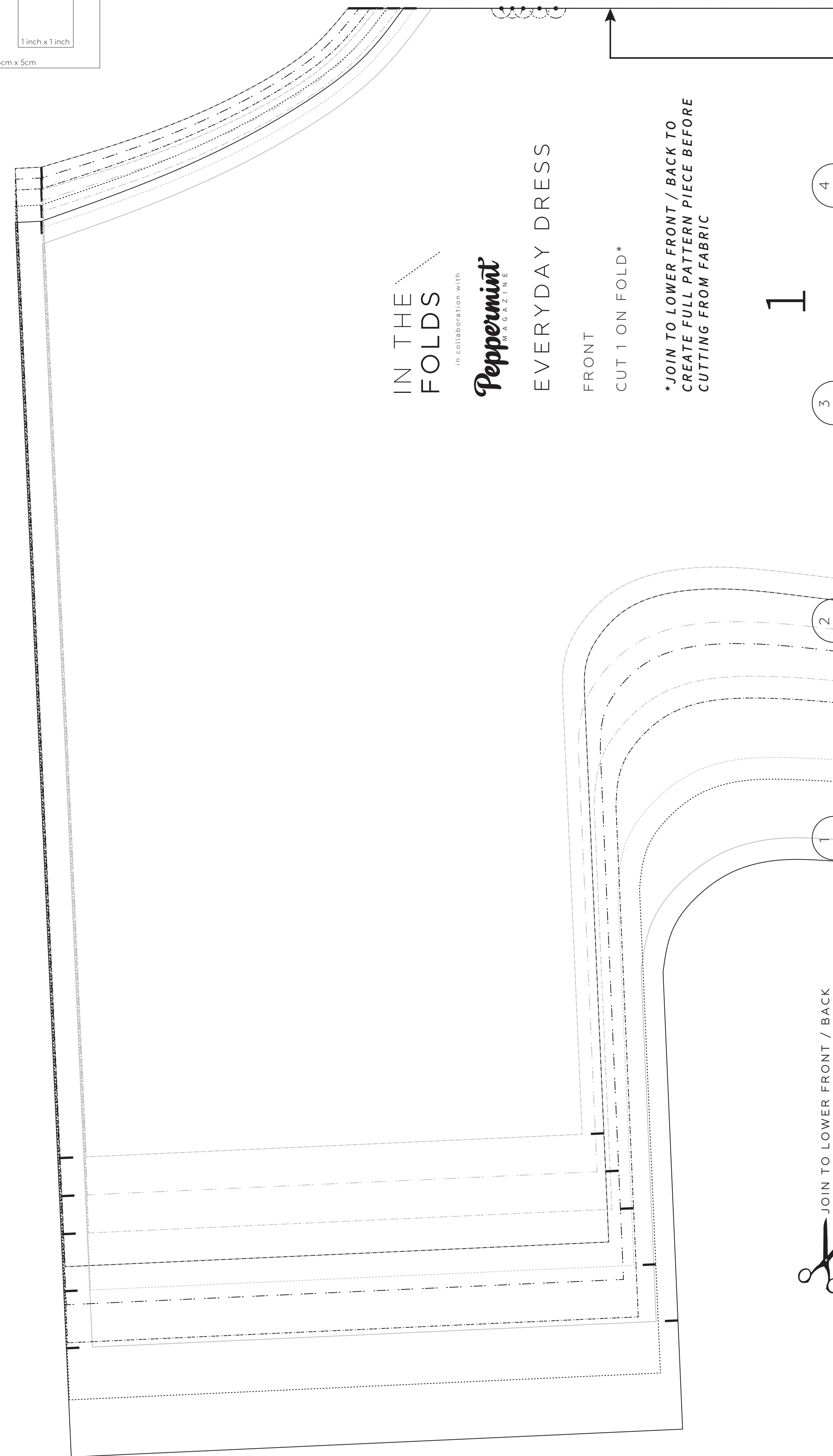
Tag us  
@inthefolds  
@peppermintmagazine

COPY SHOP VERSION  
PRINT SIZE A0 (841mm x 1189mm)  
Page 1 of 2

### TEST SQUARE



Did you know this sewing pattern has layers?  
This means that you can select only the sizes you would like to print. Look to p.6 of the instruction booklet for more details.



### BODY MEASUREMENTS

|                  | 1                                | 2                                | 3                                 | 4                                    | 5                                    |
|------------------|----------------------------------|----------------------------------|-----------------------------------|--------------------------------------|--------------------------------------|
| <b>HIGH BUST</b> | 71cm - 76cm<br>28" - 29 1/2"     | 81cm - 86cm<br>31 1/2" - 33 1/2" | 91cm - 96cm<br>35 3/4" - 37 3/4"  | 103.5cm - 111cm<br>40 3/4" - 43 1/4" | 118.5cm - 126cm<br>46 3/4" - 49 1/2" |
| <b>BUST</b>      | 76cm - 81cm<br>29 1/2" - 31 3/4" | 86cm - 91cm<br>33 1/2" - 35 3/4" | 96cm - 101cm<br>37 3/4" - 39 3/4" | 108.5cm - 116cm<br>42 3/4" - 45 3/4" | 123.5cm - 131cm<br>48 3/4" - 51 3/4" |
| <b>WAIST</b>     | 61cm - 66cm<br>24" - 26"         | 71cm - 76cm<br>28" - 29 1/2"     | 81cm - 86cm<br>31 1/2" - 33 1/2"  | 93.5cm - 101cm<br>36 3/4" - 39 3/4"  | 108.5cm - 116cm<br>42 3/4" - 45 3/4" |
| <b>HIP</b>       | 84cm - 88cm<br>33" - 35"         | 94cm - 99cm<br>37" - 39"         | 104cm - 109cm<br>41" - 42 3/4"    | 116.5cm - 124cm<br>45 3/4" - 48 3/4" | 131.5cm - 139cm<br>51 3/4" - 54 3/4" |

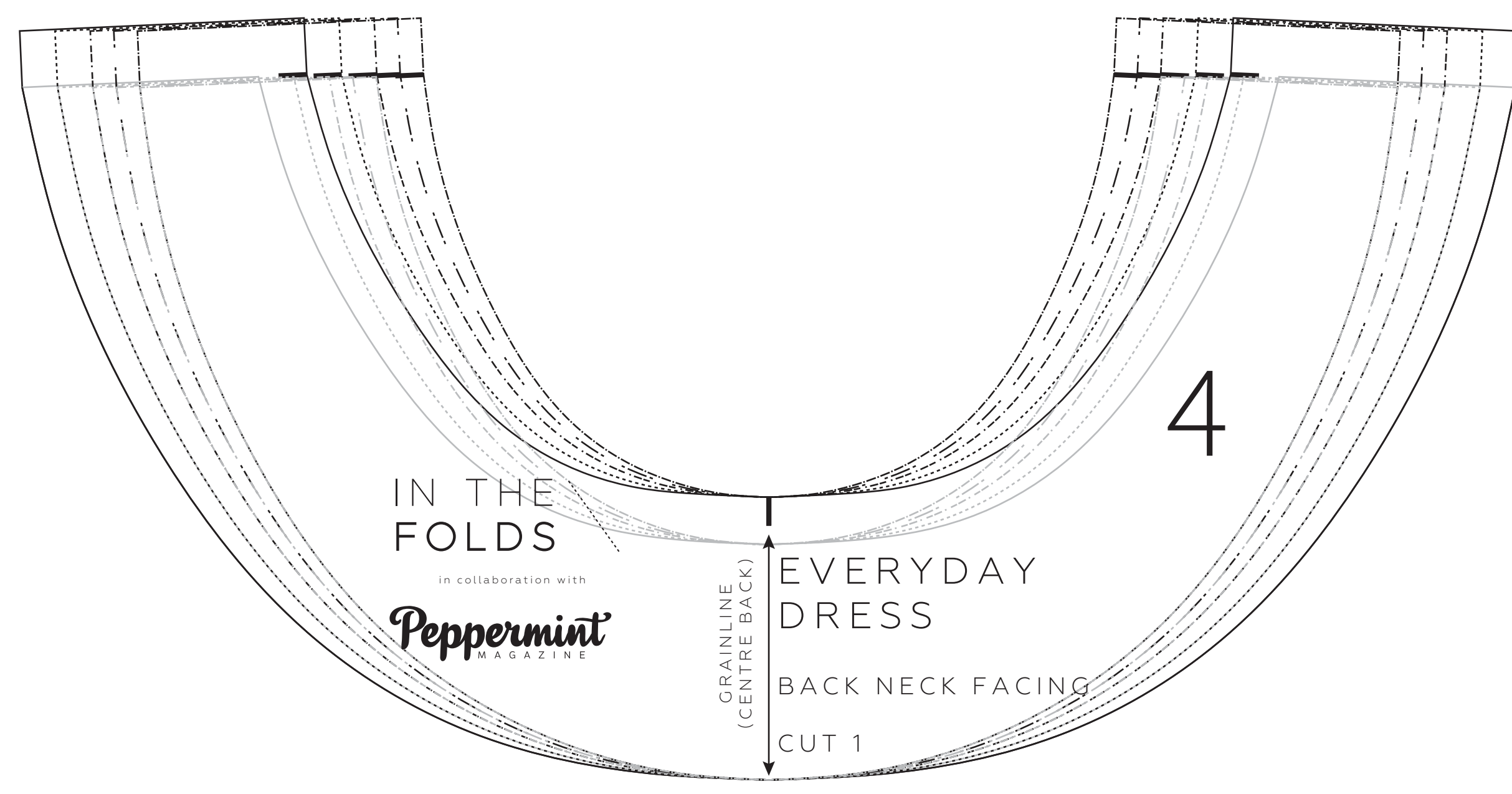
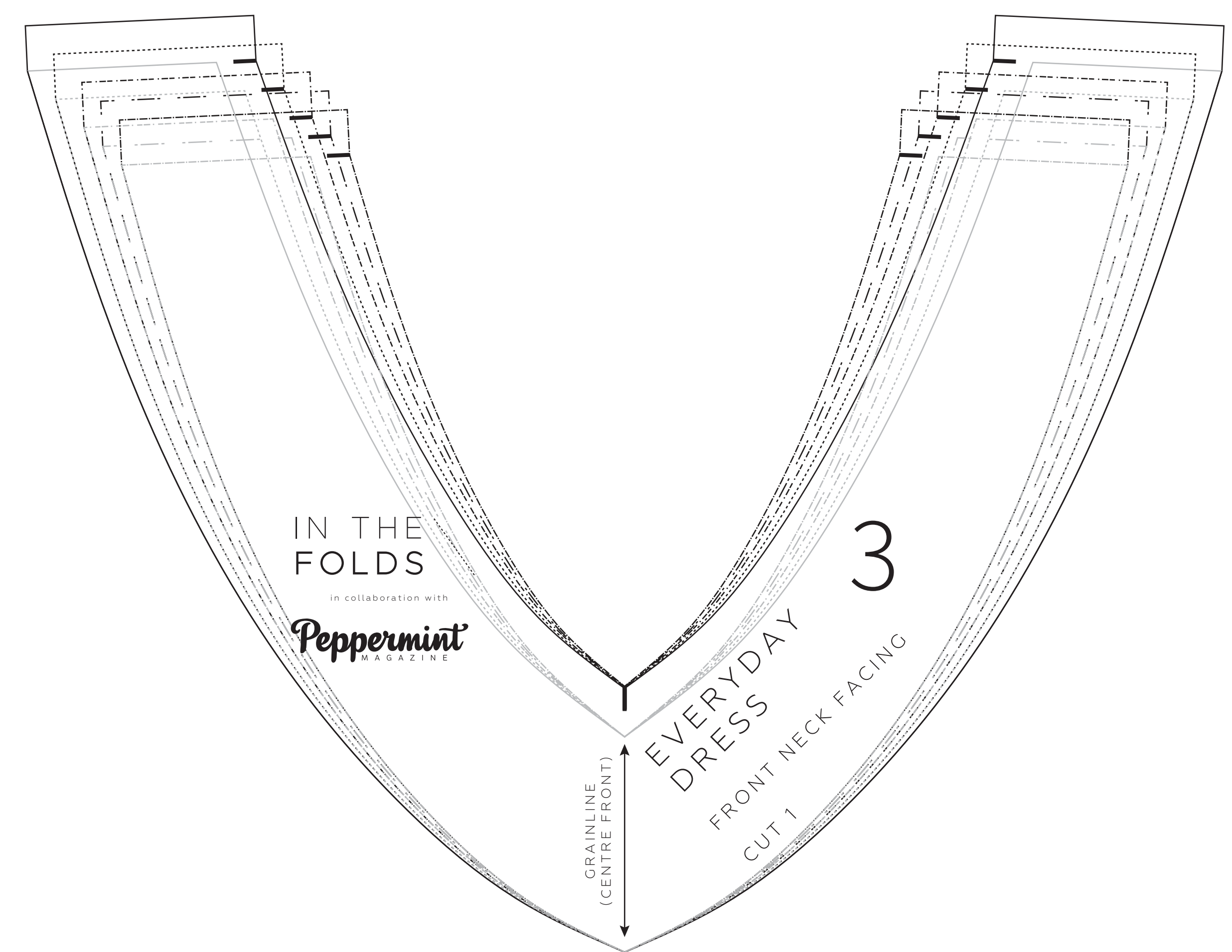
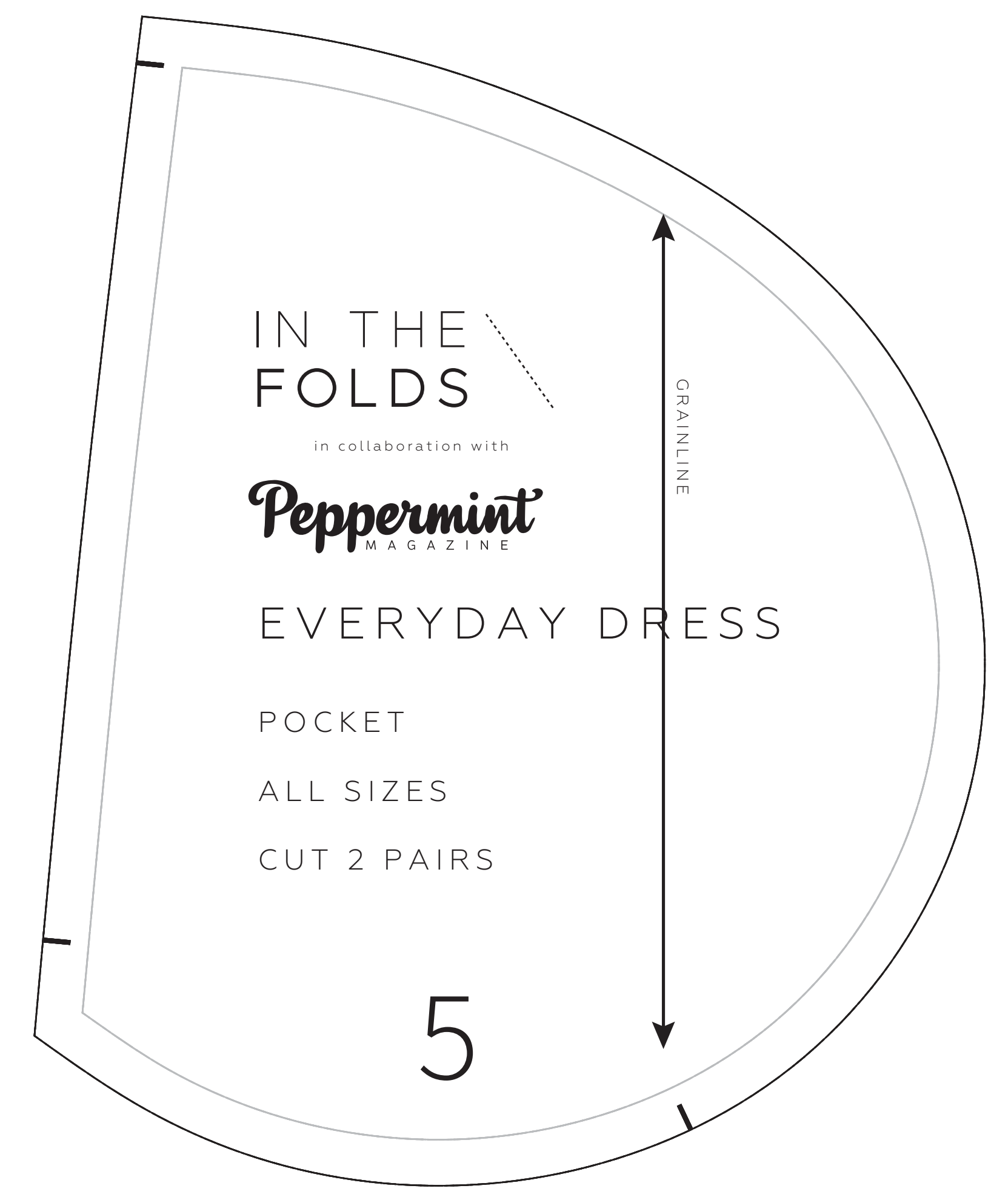
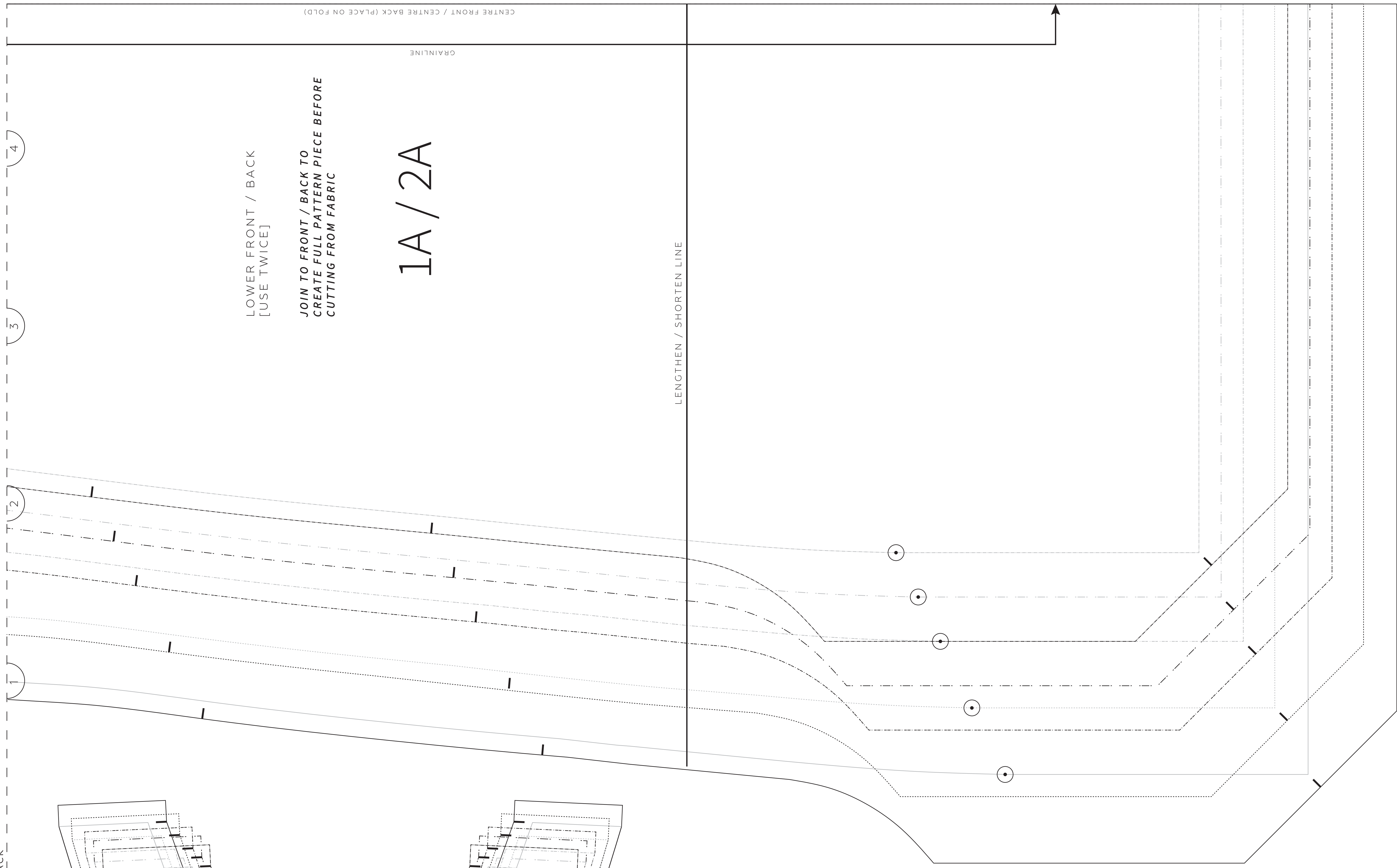
### FINISHED GARMENT MEASUREMENTS

|                | 1                 | 2                 | 3                | 4                 | 5                 |
|----------------|-------------------|-------------------|------------------|-------------------|-------------------|
| <b>BUST</b>    | 102cm<br>40 1/2"  | 112cm<br>44 1/2"  | 122cm<br>48"     | 137cm<br>53 3/4"  | 152cm<br>59 3/4"  |
| <b>WAIST</b>   | 107cm<br>42 1/2"  | 117cm<br>46 1/2"  | 127cm<br>50"     | 142cm<br>55 3/4"  | 157cm<br>61 3/4"  |
| <b>HIP</b>     | 115cm<br>45 1/4"  | 125cm<br>49 1/4"  | 135cm<br>53 1/4" | 150cm<br>59"      | 165cm<br>65"      |
| <b>LENGTH*</b> | 93.6cm<br>36 3/4" | 94.8cm<br>37 1/4" | 96cm<br>37 3/4"  | 97.8cm<br>38 1/2" | 99.6cm<br>39 1/2" |

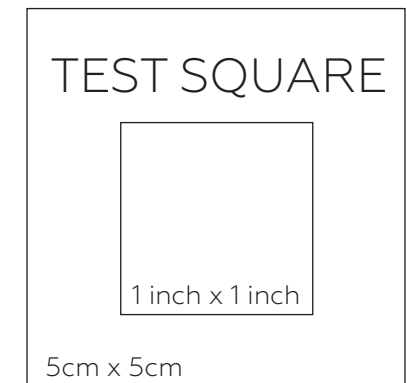
\*Measurement is taken from back neck to hem from the centre back neckline.

### FABRIC REQUIREMENTS

|                  | 1              | 2              | 3              | 4              | 5            |
|------------------|----------------|----------------|----------------|----------------|--------------|
| <b>150cm 60"</b> | 2.3m<br>2.6yds | 2.3m<br>2.6yds | 2.3m<br>2.6yds | 2.4m<br>2.7yds | 2.7m<br>3yds |



JOIN TO FRONT / BACK



SHARE YOUR MAKES

#pepperminteverydaydress

Tag us  
@inthefolds  
@peppermintmagazine

COPY SHOP VERSION  
PRINT SIZE A0 (841mm x 1189mm)  
Page 2 of 2