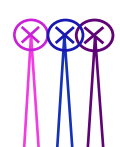


c  
e  
n  
t  
r  
e  
b  
a  
c  
k

g  
r  
a  
i  
n  
l  
i  
n  
e

C  
U  
T  
O  
N  
F  
O  
L  
D

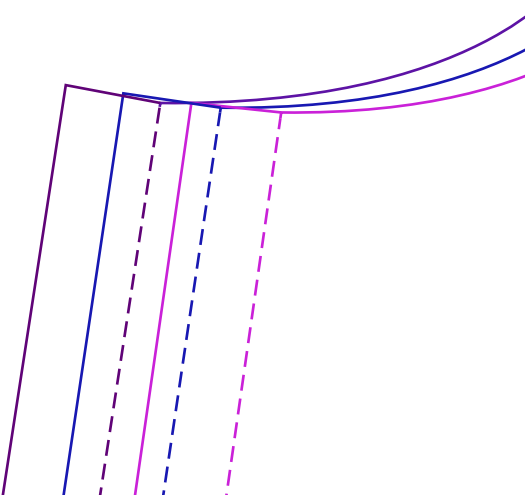
**REVERSABLE  
WRAP DRESS**  
**SIZE 8,10,12**  
**BACK BODICE**  
**CUT 1 FABRIC ON FOLD**  
**CUT 1 CONTRAST ON FOLD**

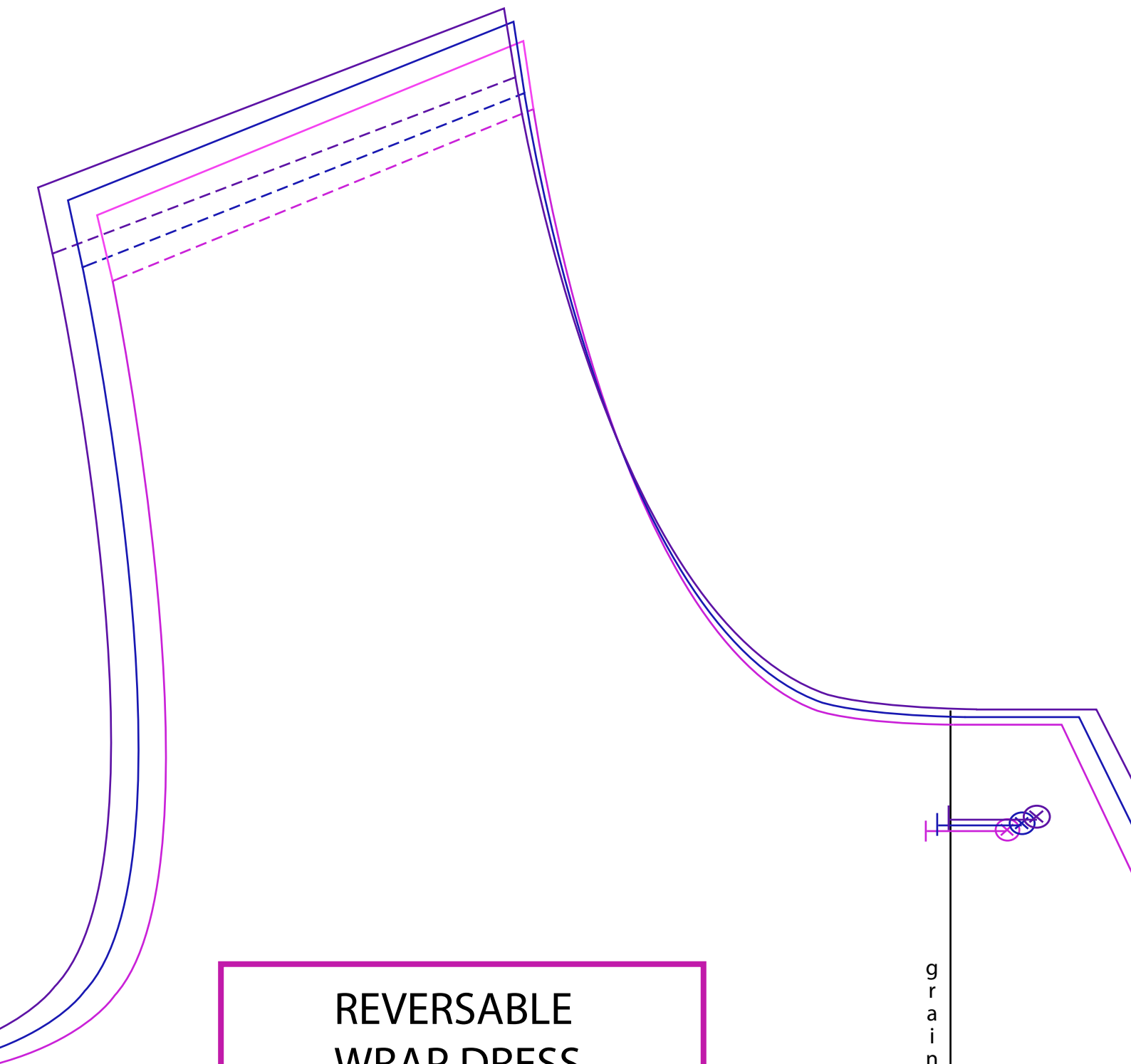




# SKIRT

Cut 3 skirt panels each  
at 66cm (horizontal)  
x 64cm (vertical) in  
both fabric and contrast





REVERSABLE  
WRAP DRESS

SIZE 8,10,12

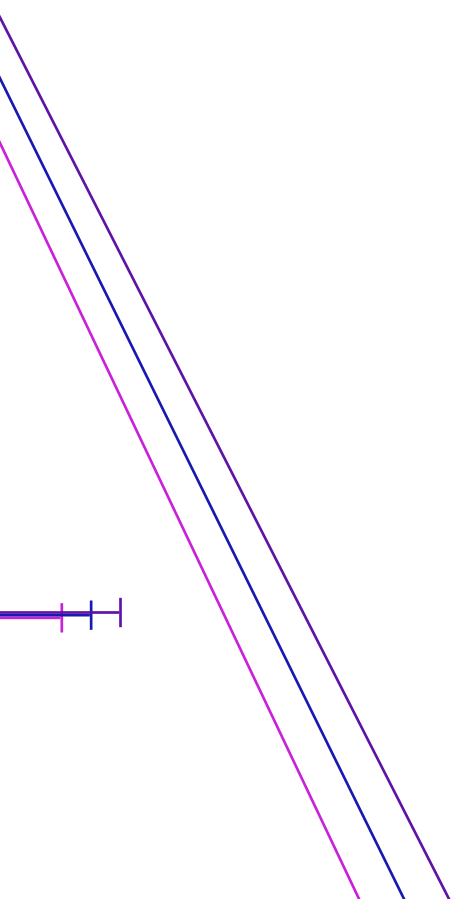
FRONT BODICE

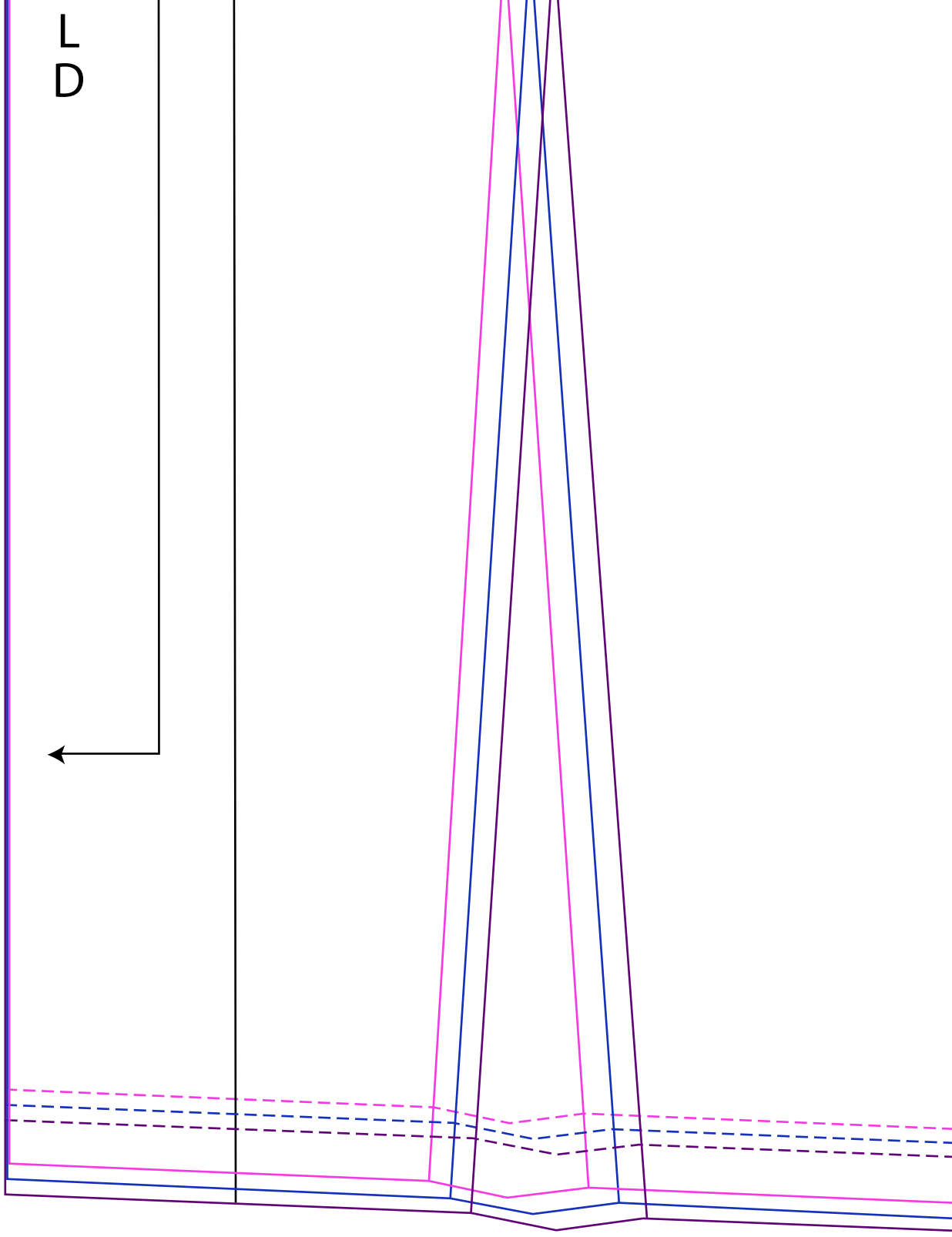
CUT 1 PAIR FABRIC

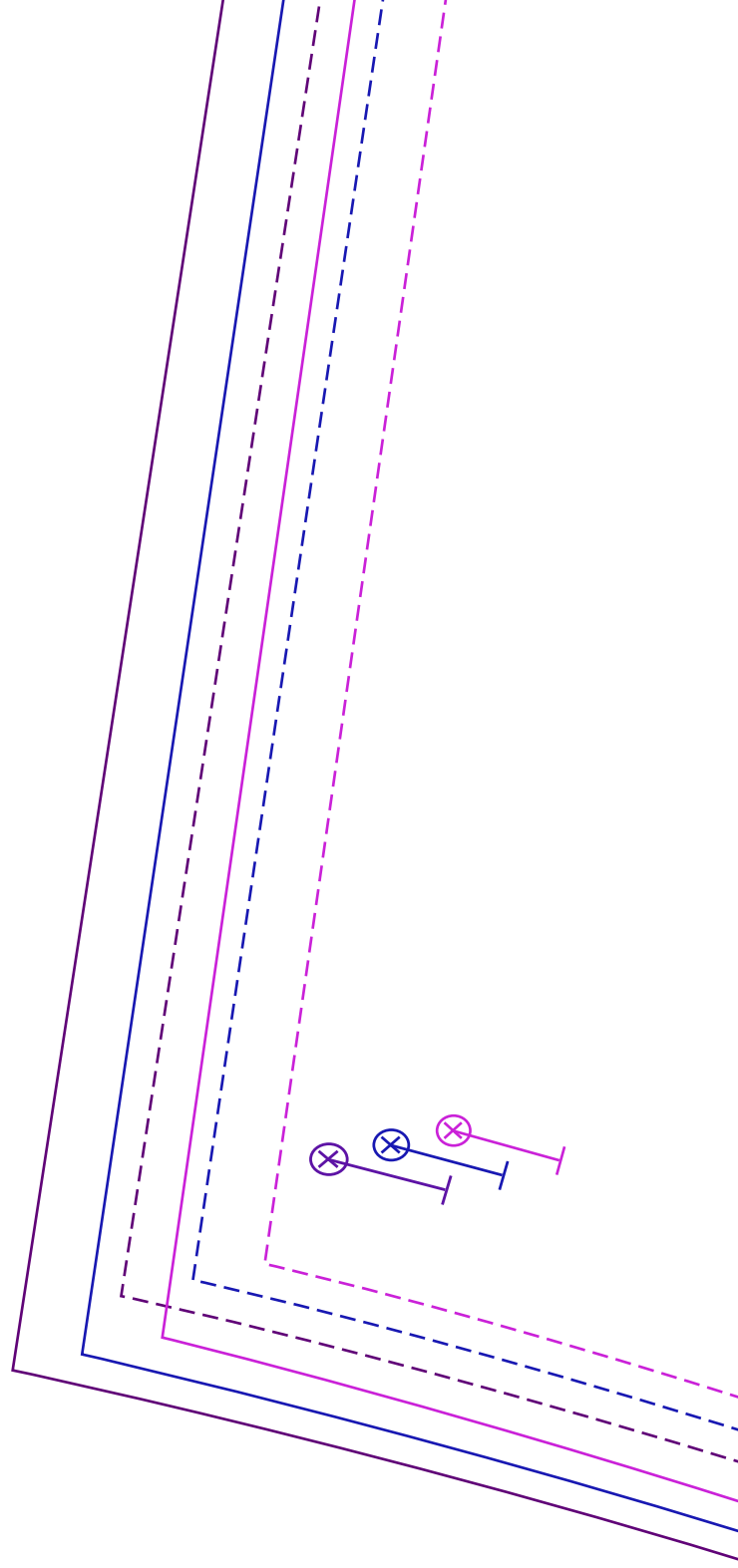
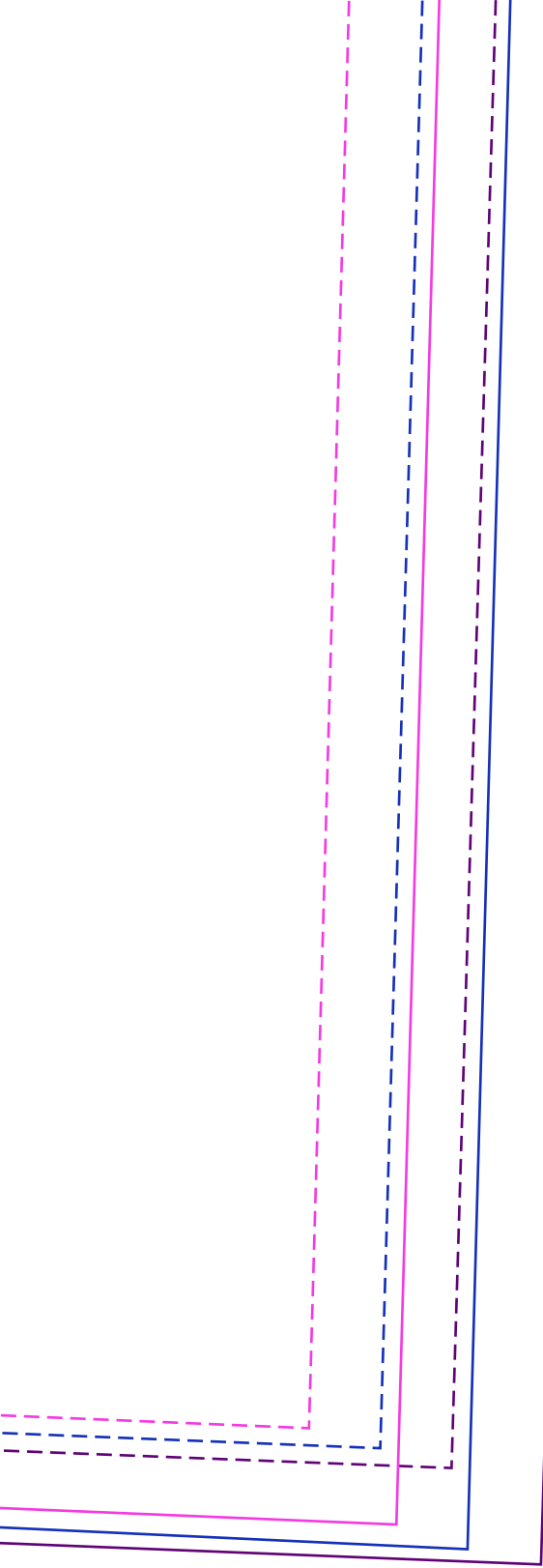
CUT 1 PAIR CONTRAST

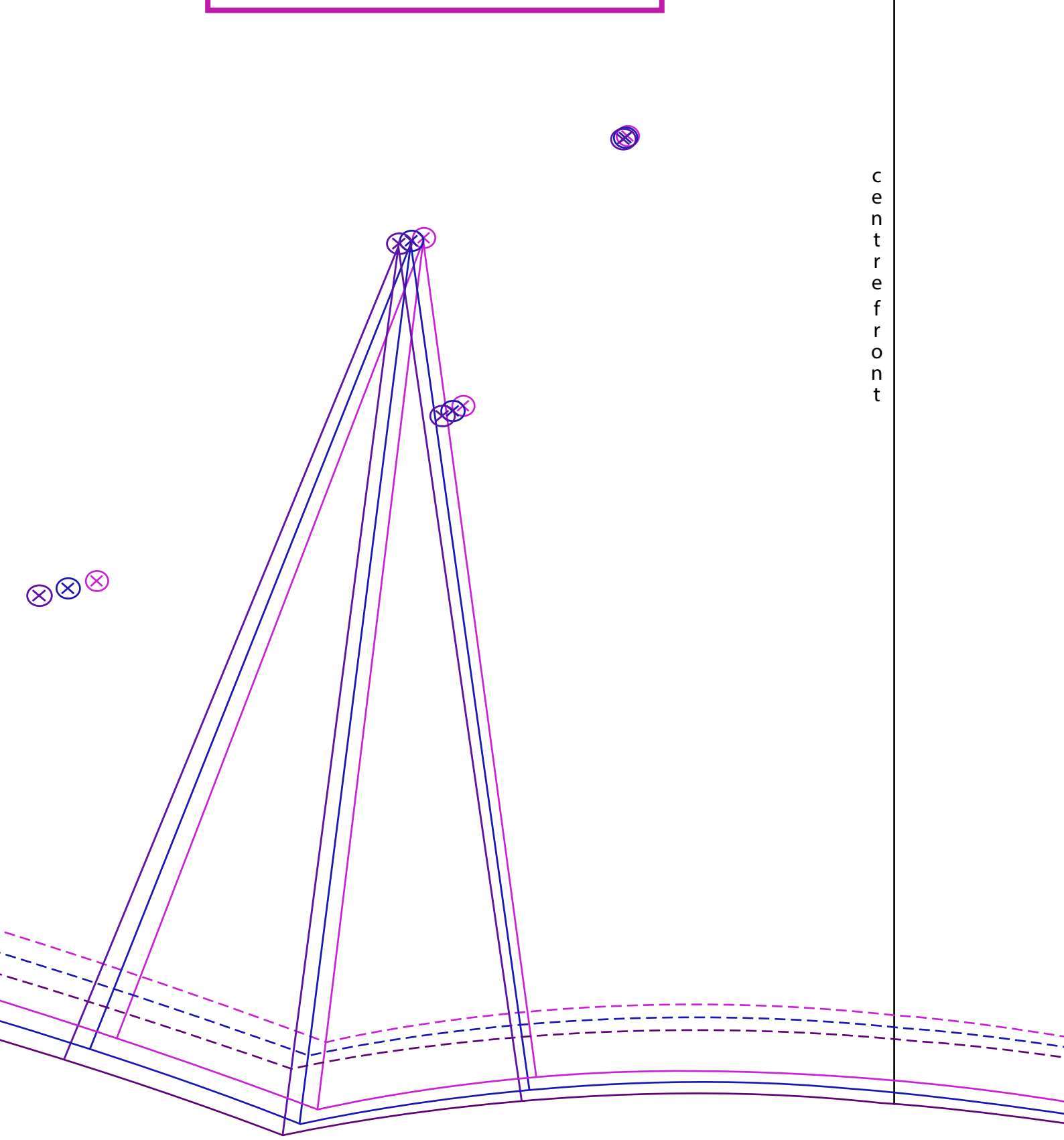
g  
r  
a  
i  
n  
l  
i  
n  
e











c  
e  
n  
t  
r  
e  
f  
r  
o  
n  
t

