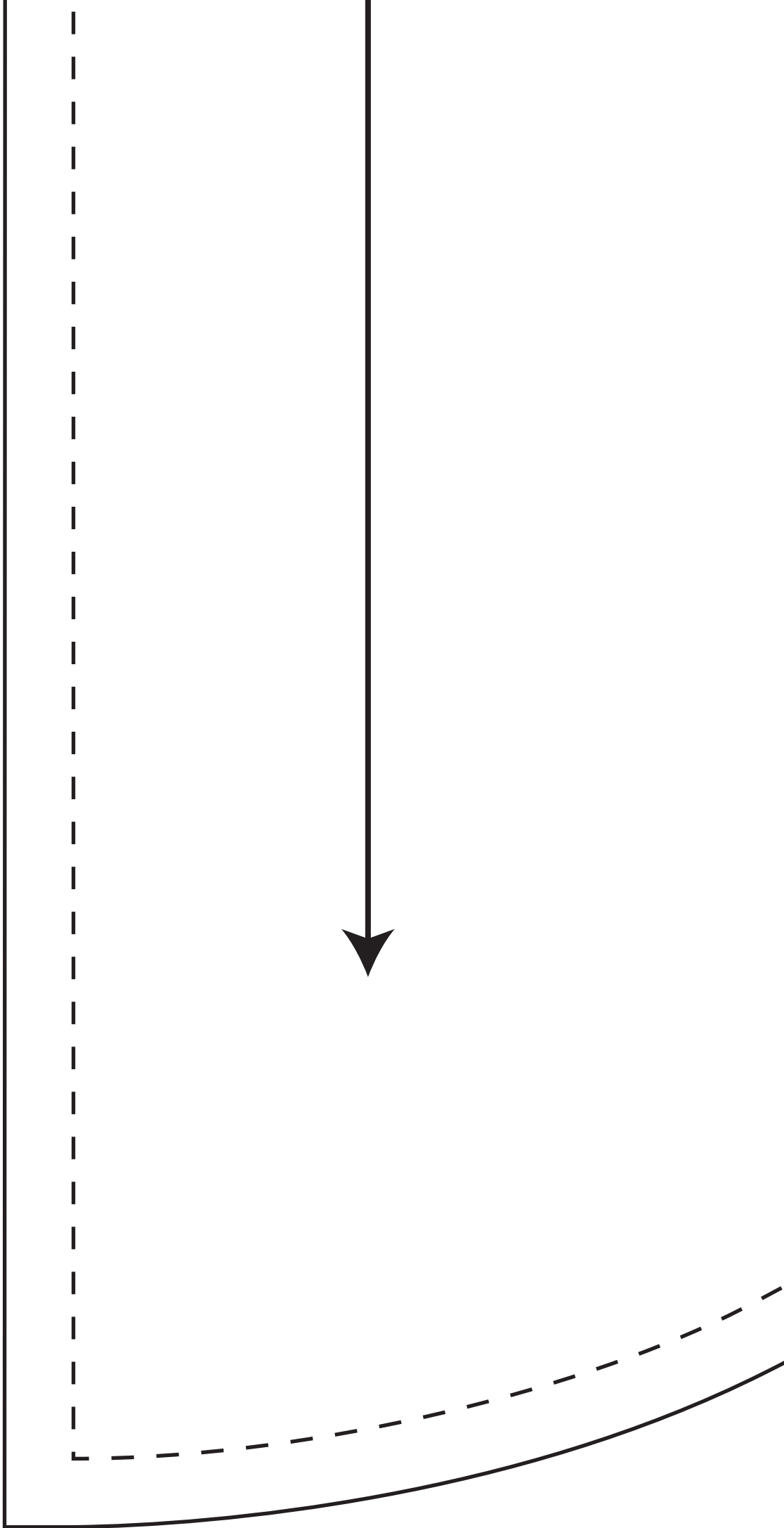


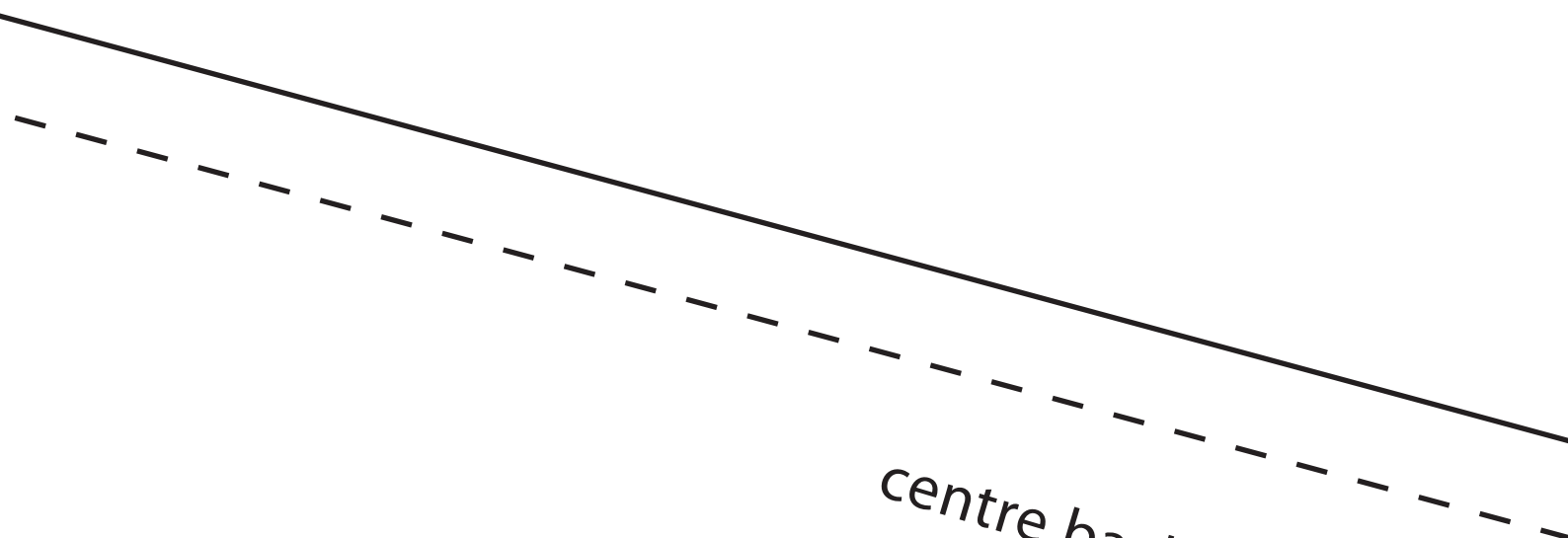


centre back

grain line

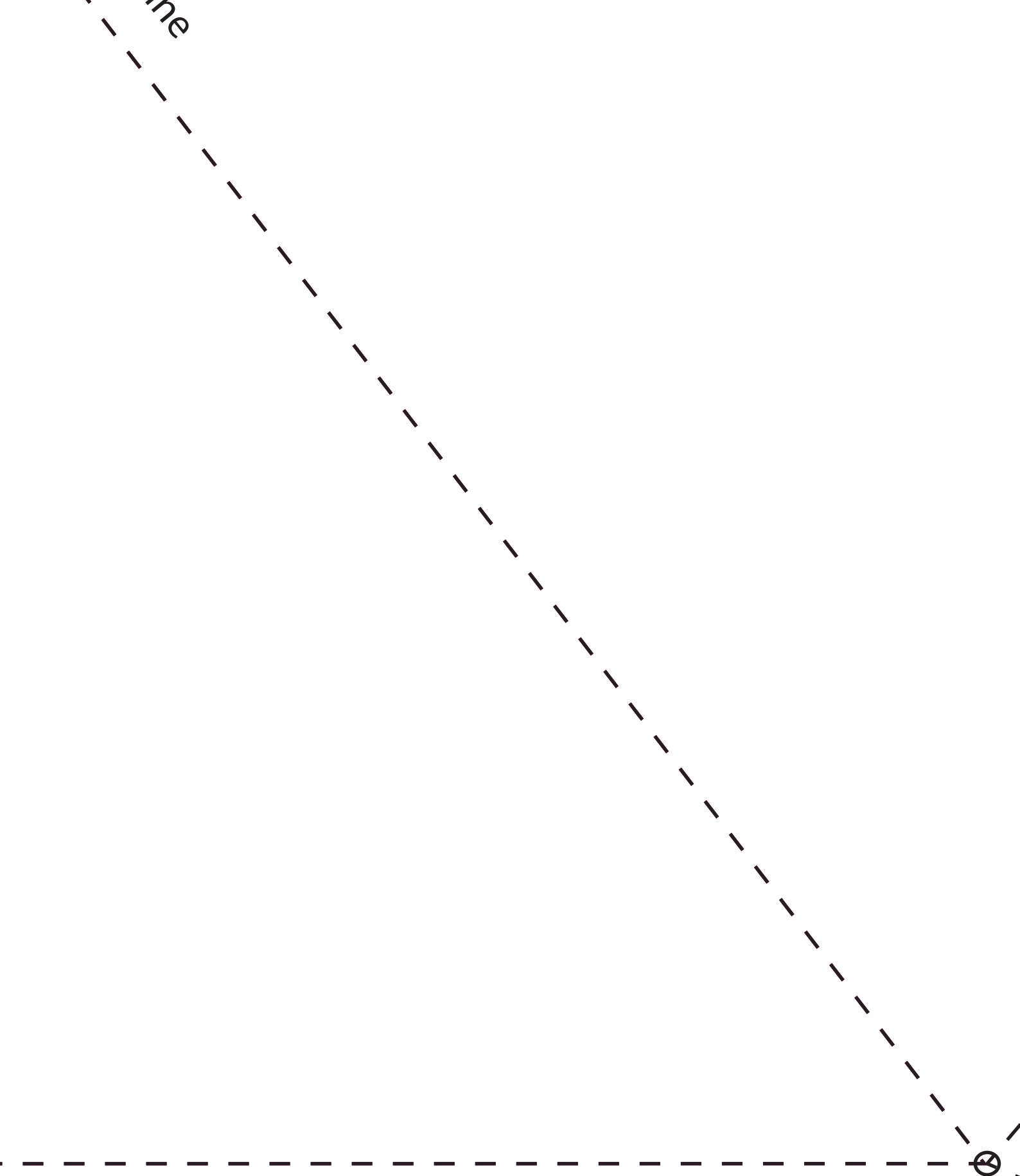
back
one s
cut o
seam





centre back

fold line



ASSEL JACKET

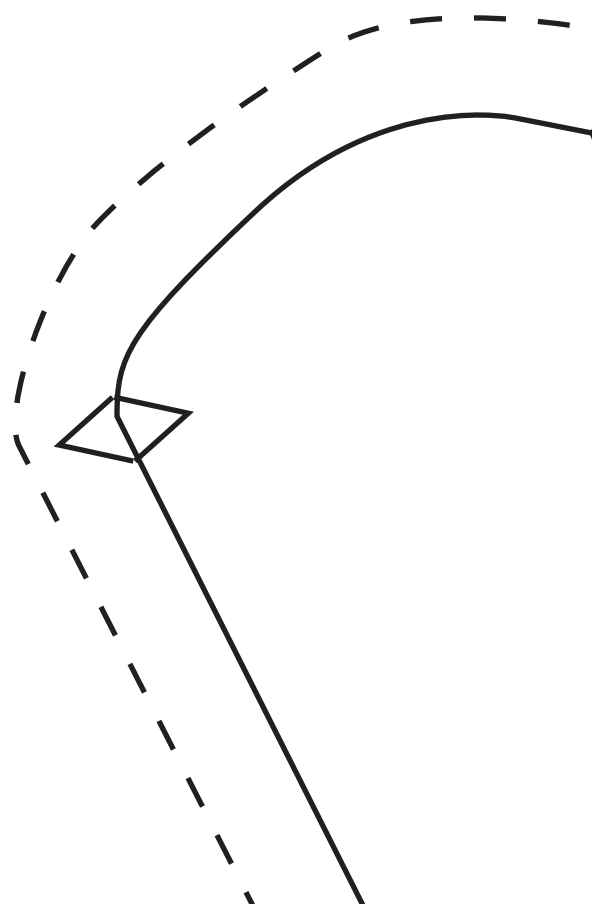
COLE JACKIE

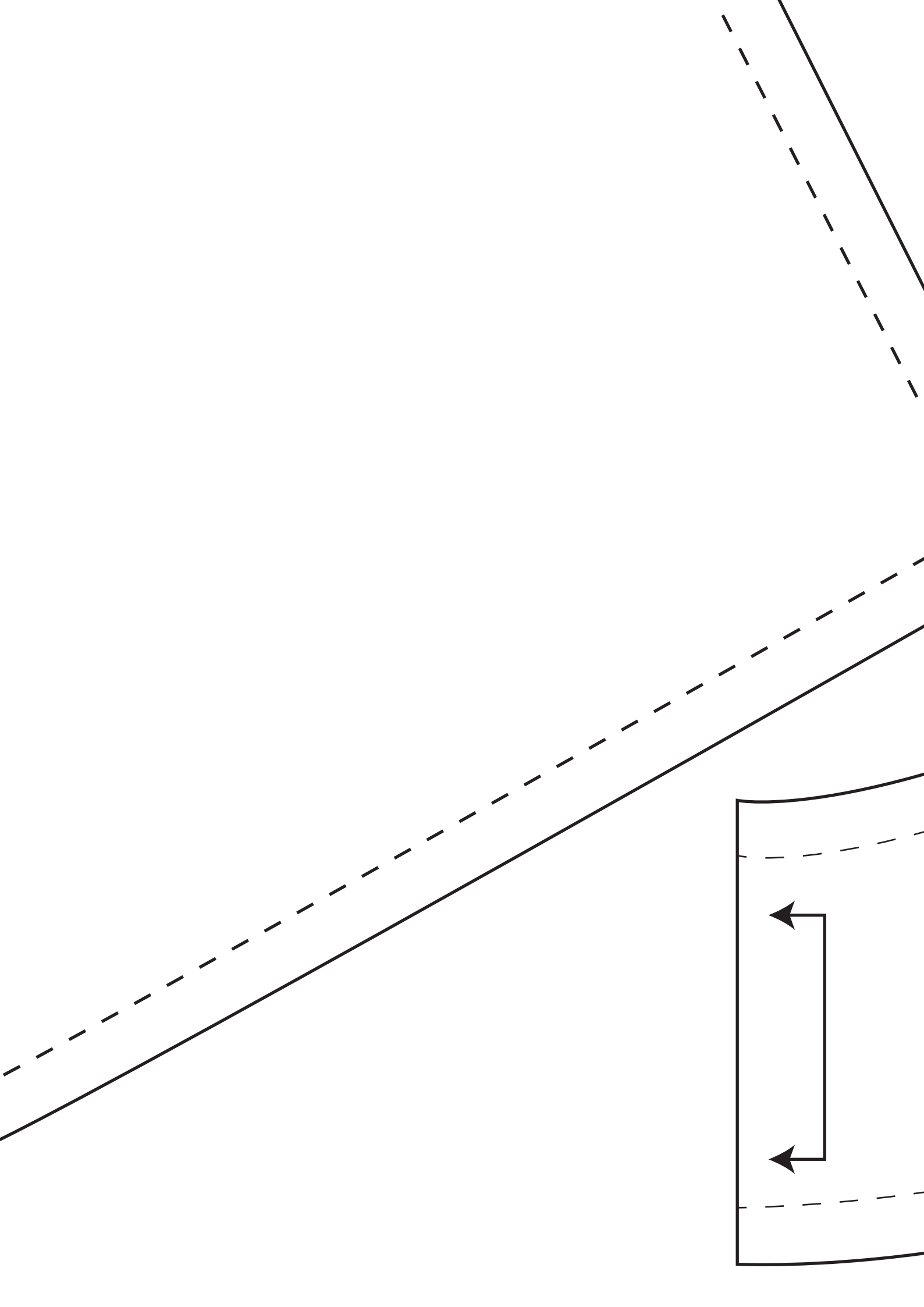
k

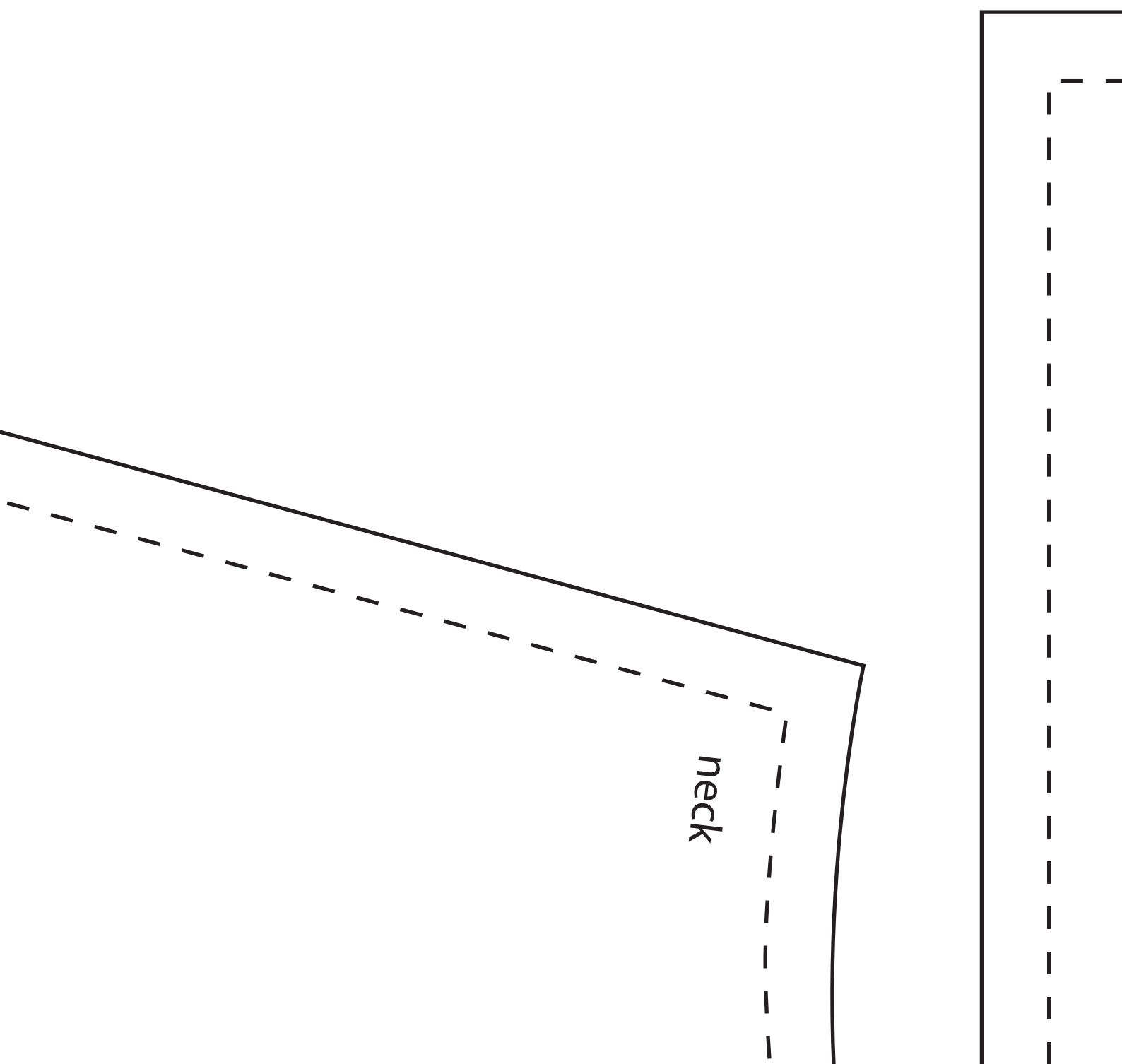
size

one pair

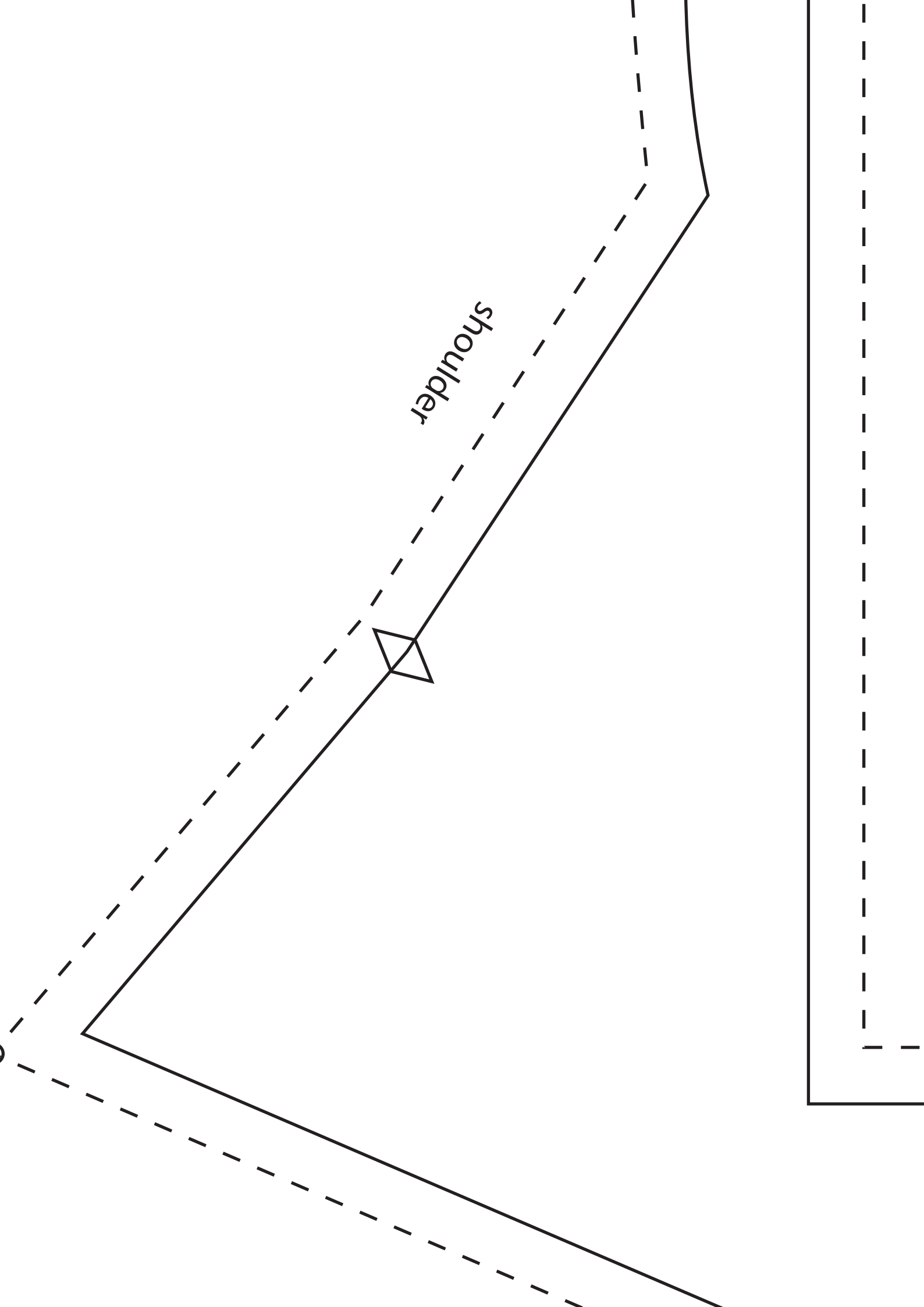
m allowance 1cm



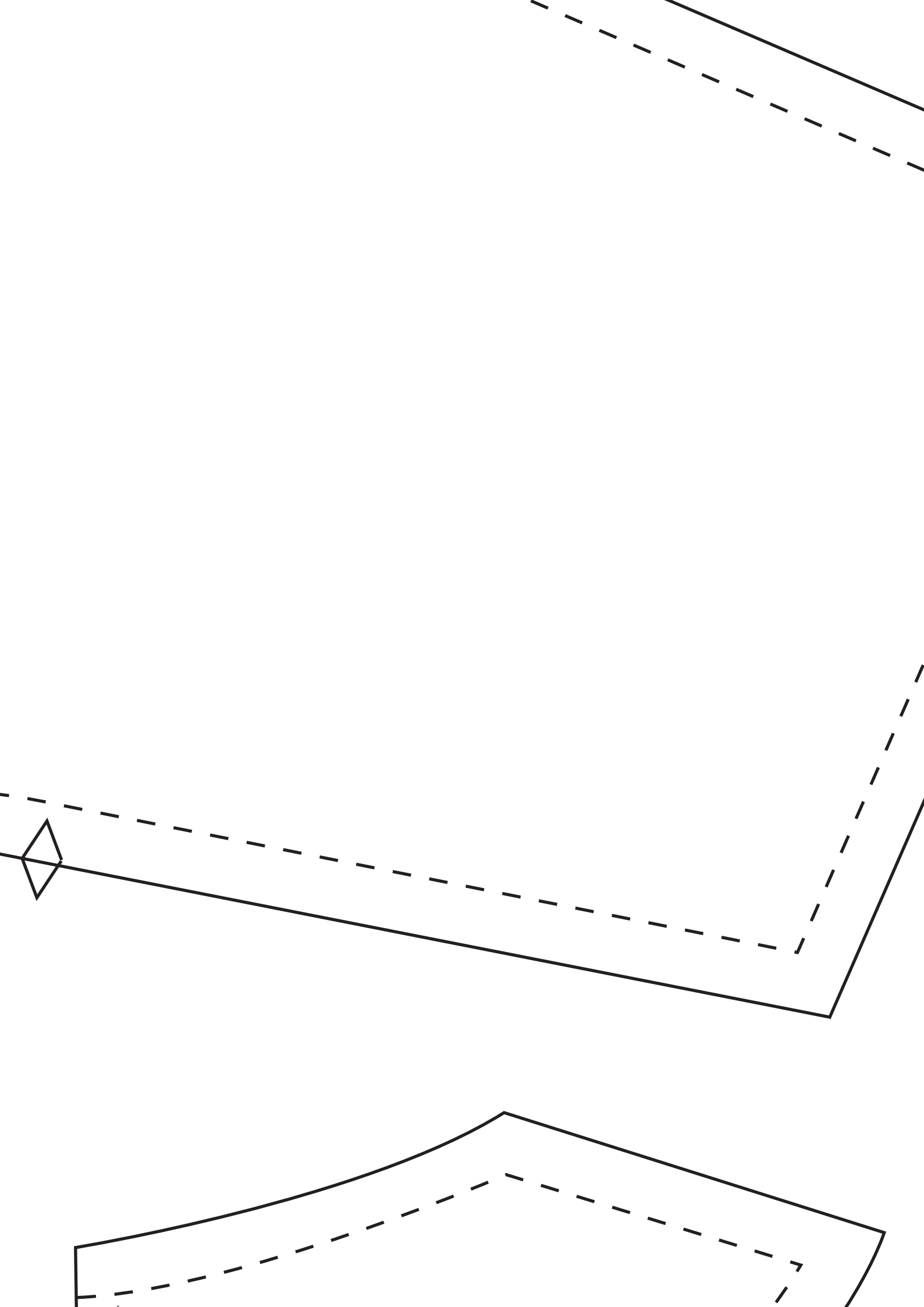


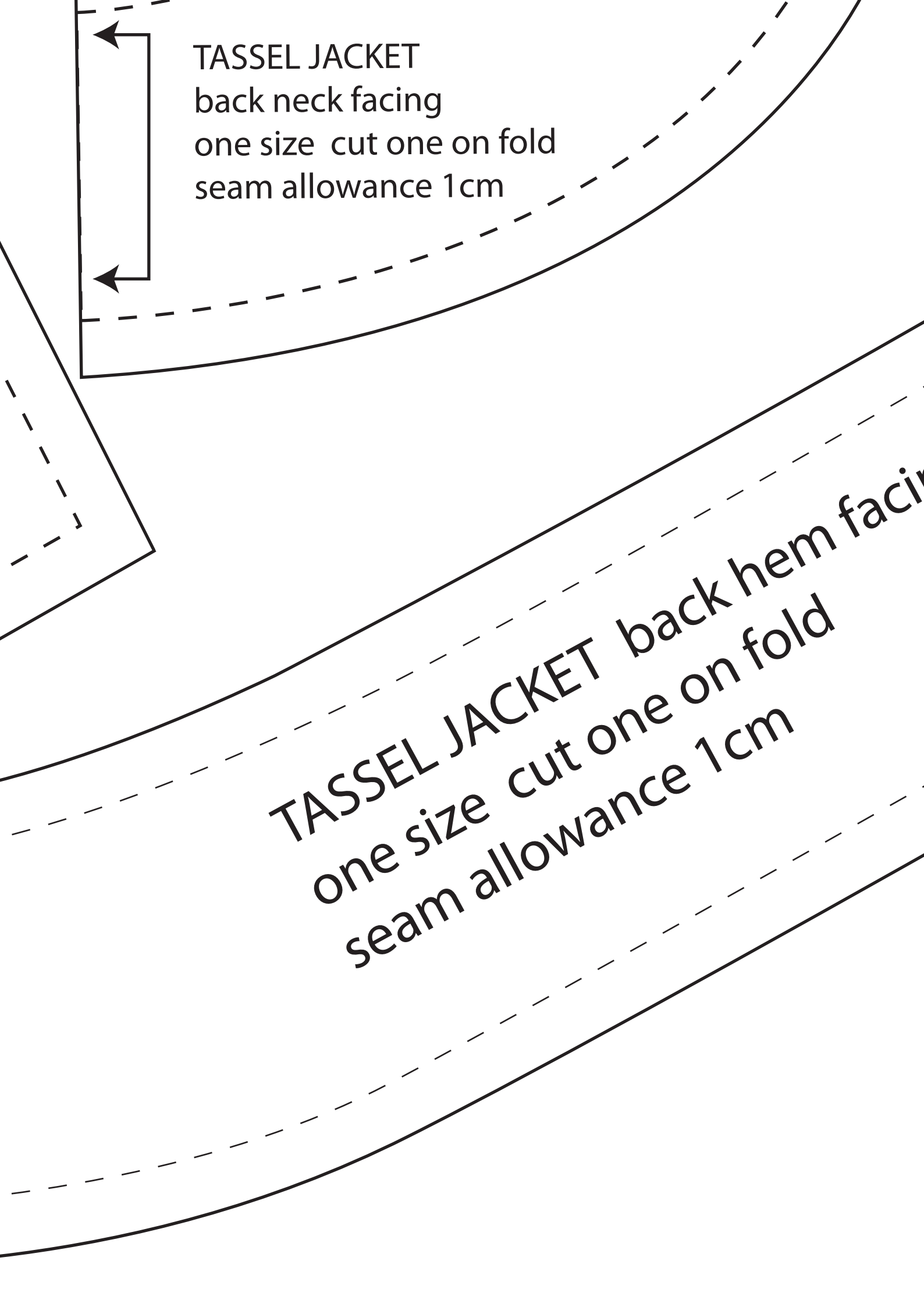


neck



shoulder

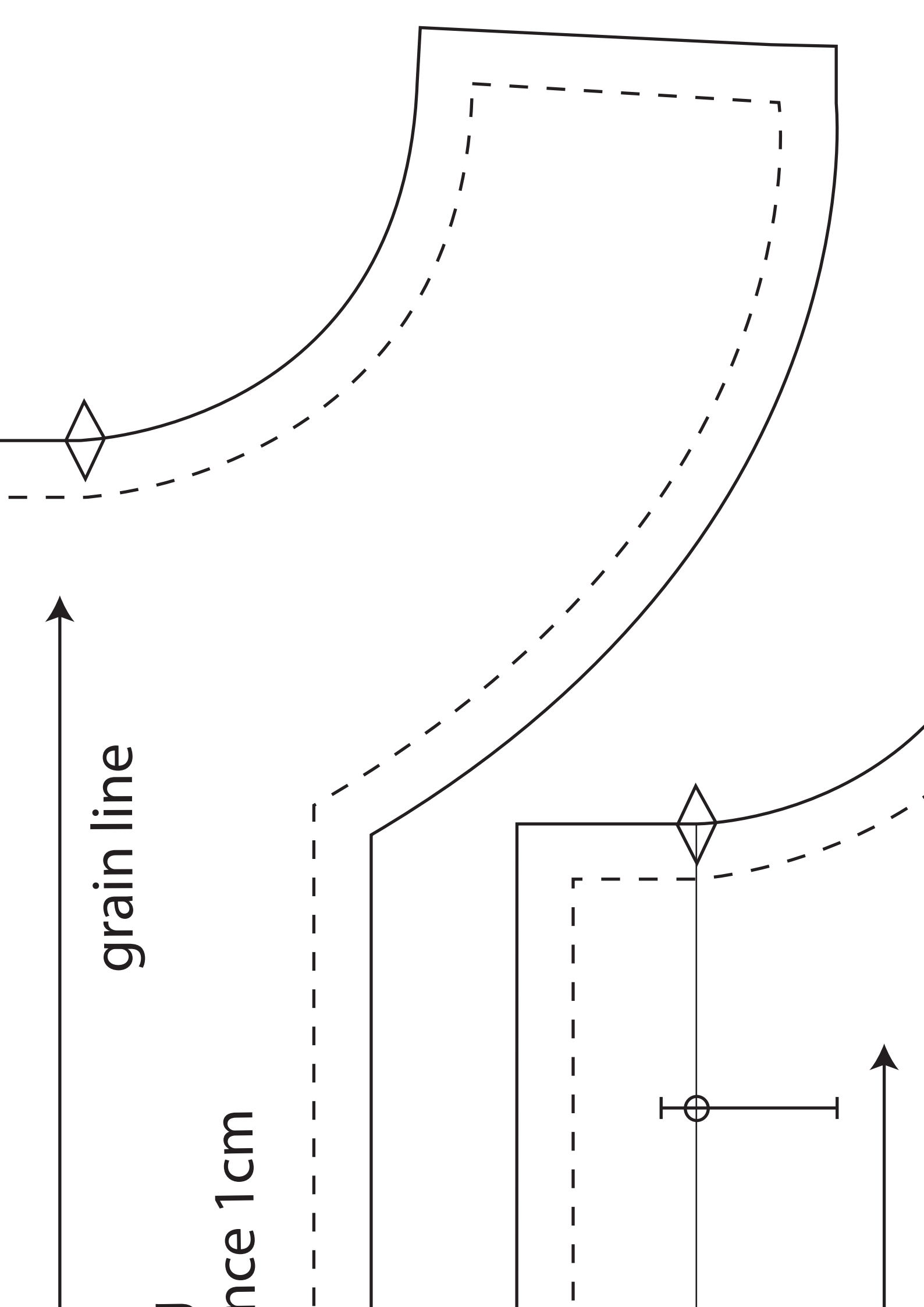


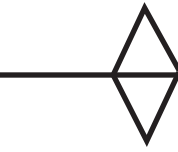


The image shows a technical drawing of a pattern piece for a tassel jacket. It features a curved neckline with a dashed line indicating the seam allowance. Two arrows point to the left from the top and bottom edges of the neck facing, suggesting where it will be attached to the jacket. The text provides instructions on how to cut and use the pattern.

TASSEL JACKET
back neck facing
one size cut one on fold
seam allowance 1cm

TASSEL JACKET back hem facing
one size cut one on fold
seam allowance 1cm

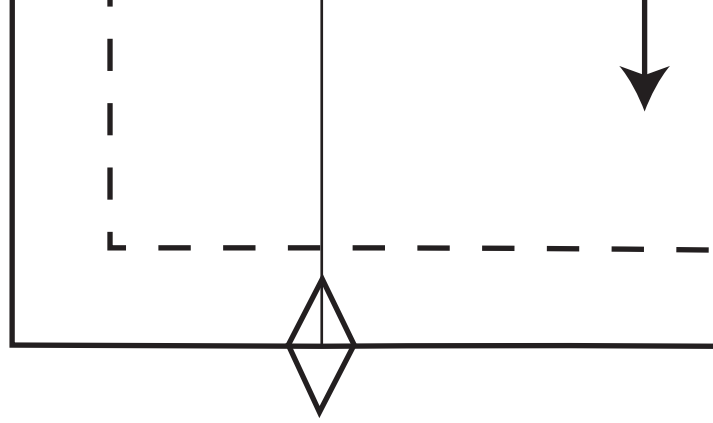
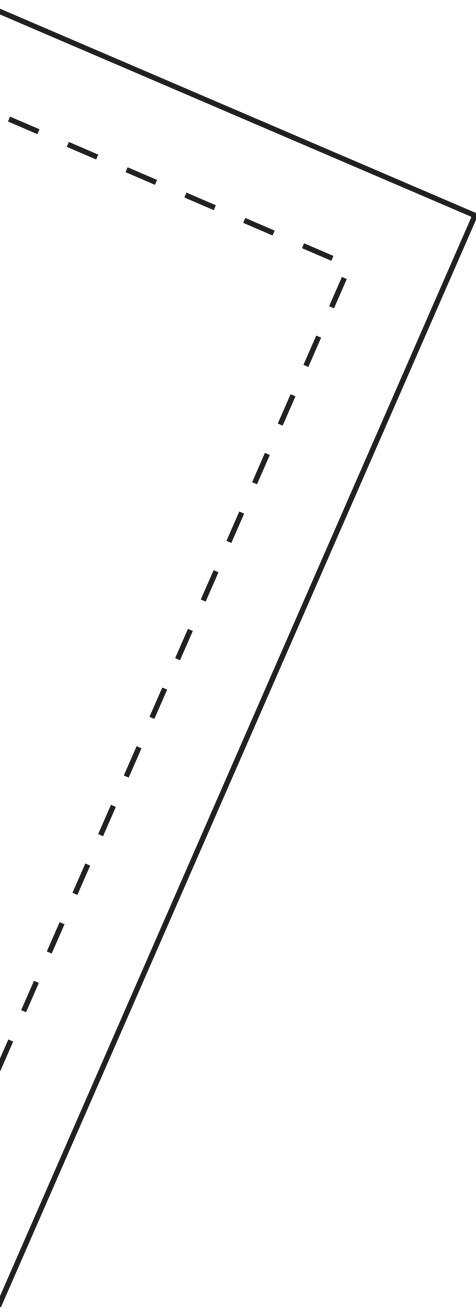




TASSEL JACKET centre front facing
one size cut one pair seam allowan

centre front

grain line



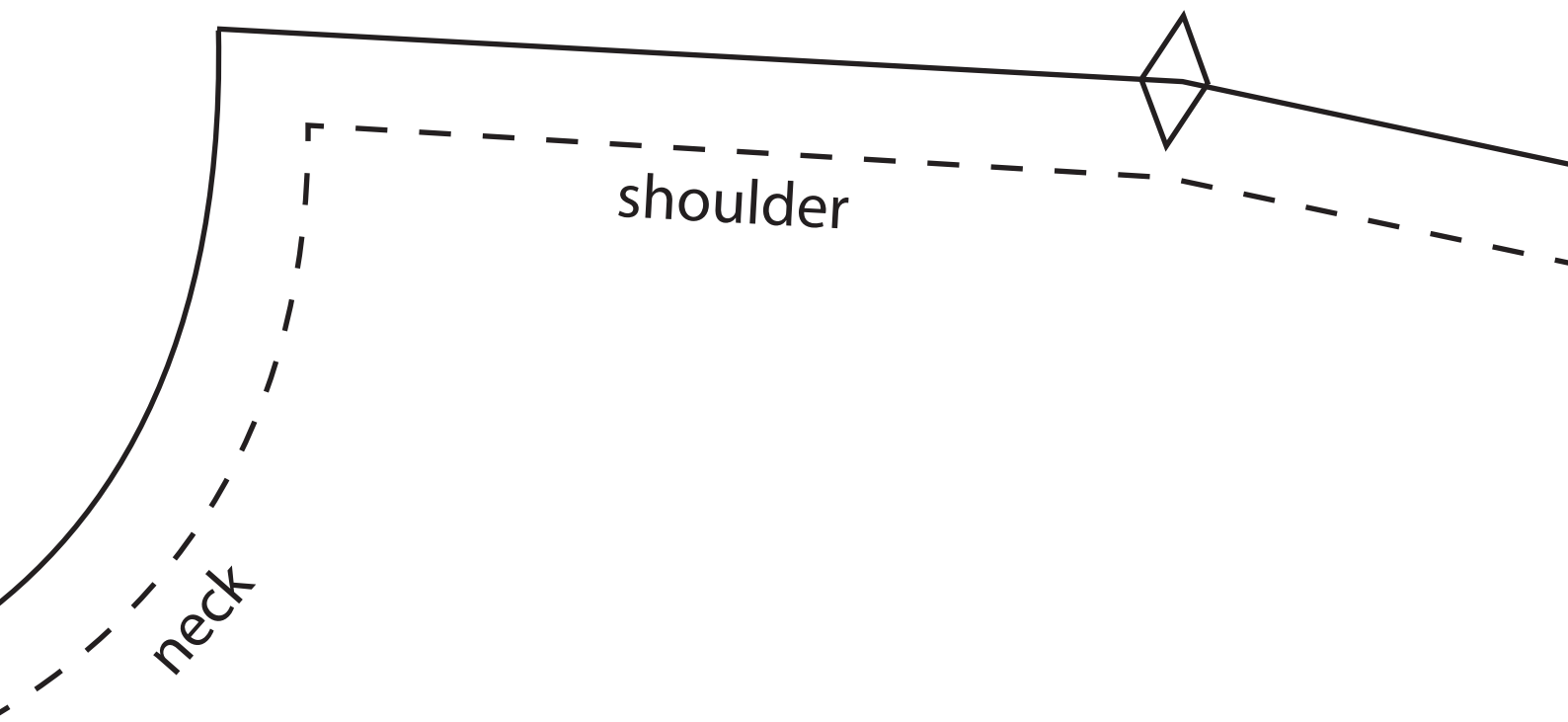
TASSEL JACKET

sleeve facing

one size cut one pair

seam allowance 1cm

ing



neck

shoulder

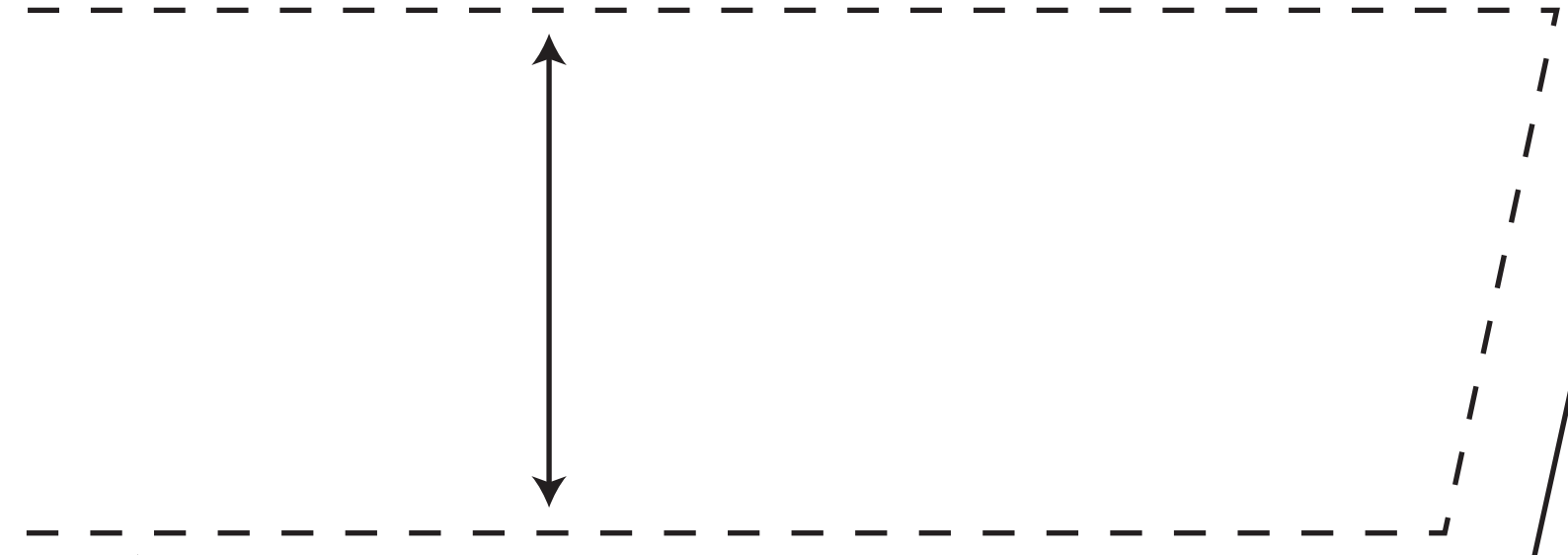
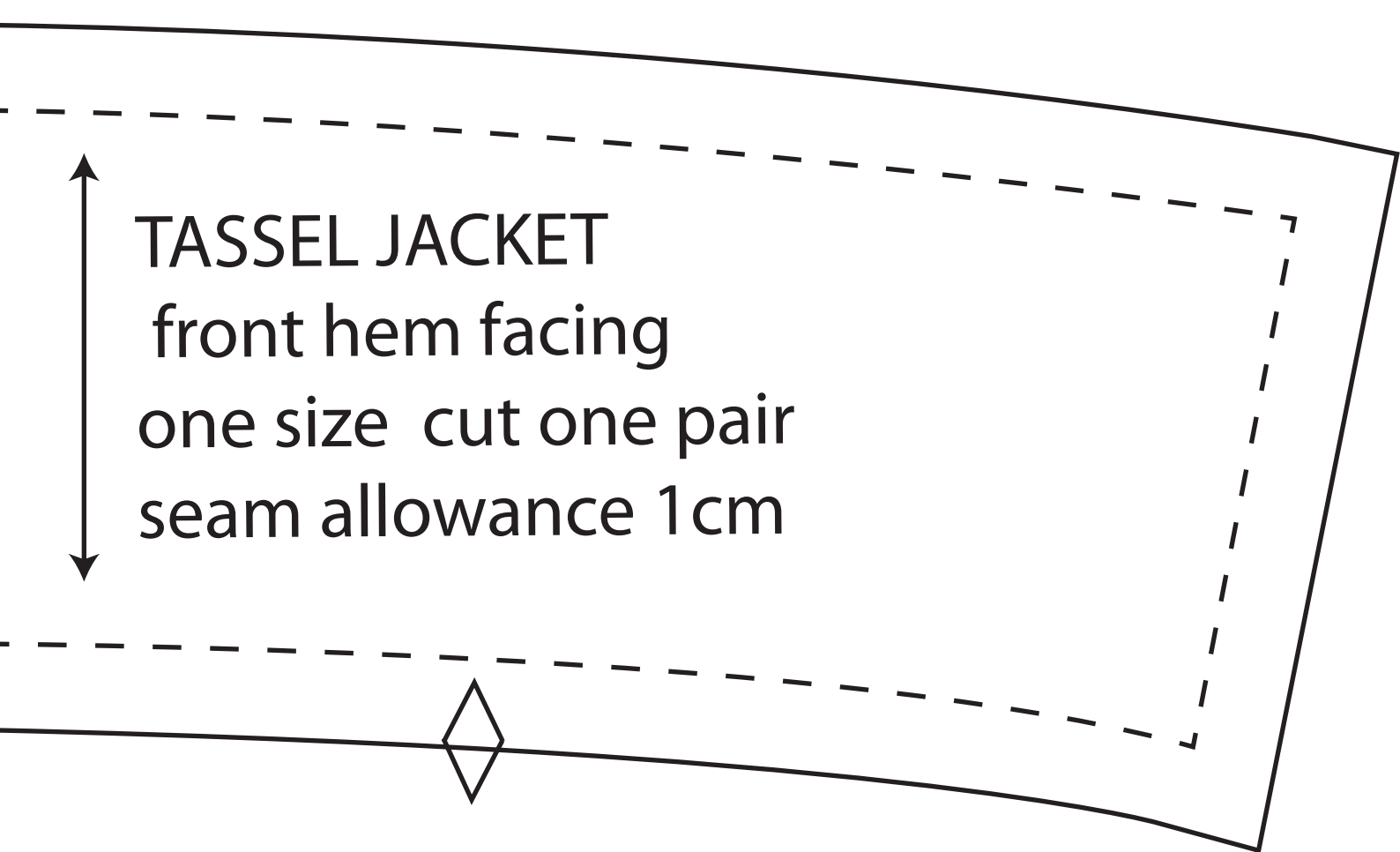
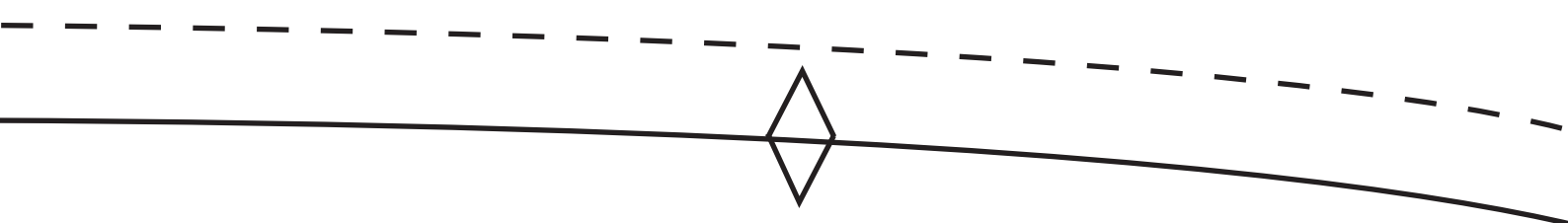
TASSEL JACKET

front

one size

cut one pair

seam allowance 1cm



TASSEL JACKET
front hem facing
one size cut one pair
seam allowance 1cm





