

1a

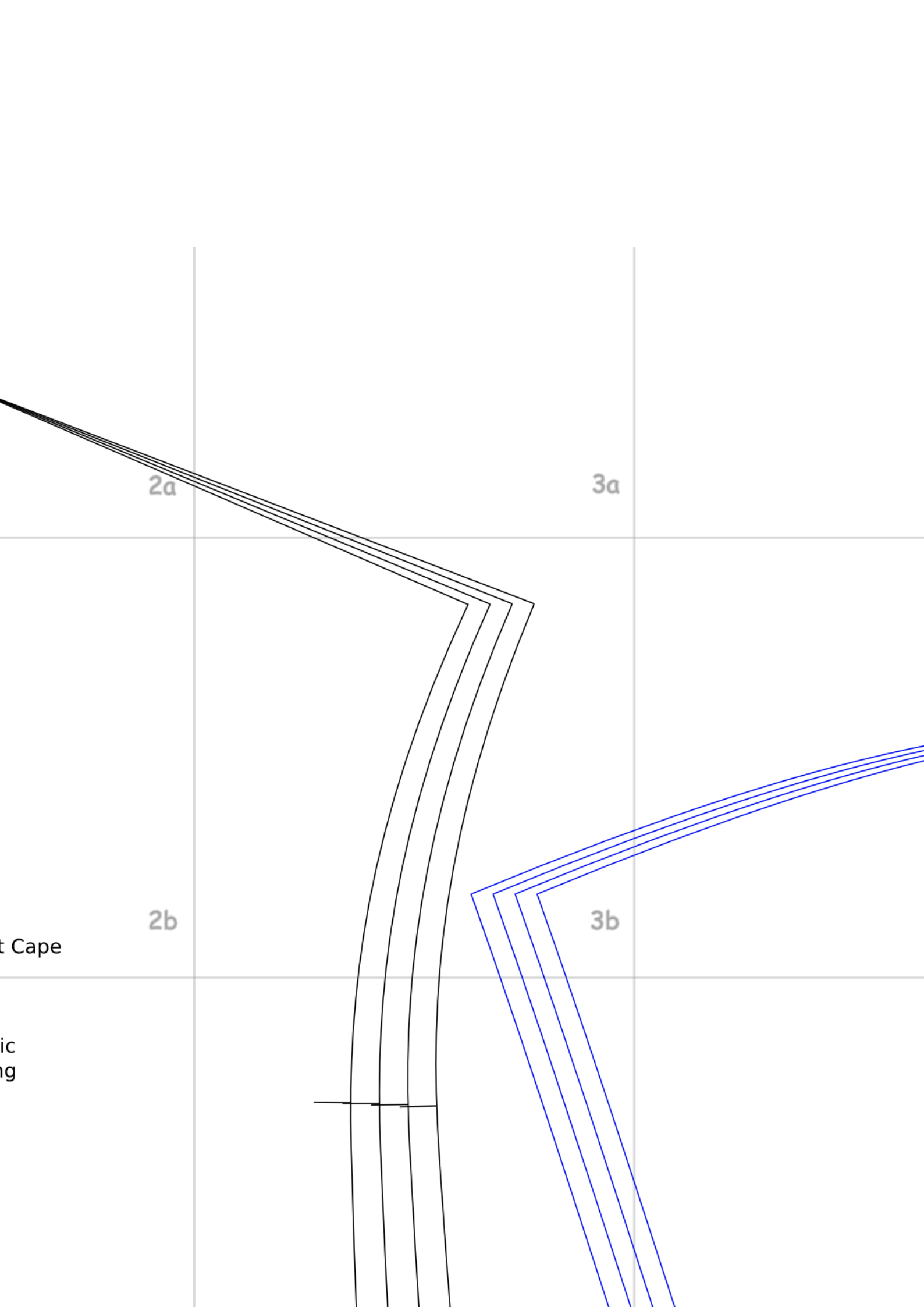
1b

Peppermint Cap

Front

Cut 2: Fabric

Cut 2: Lining

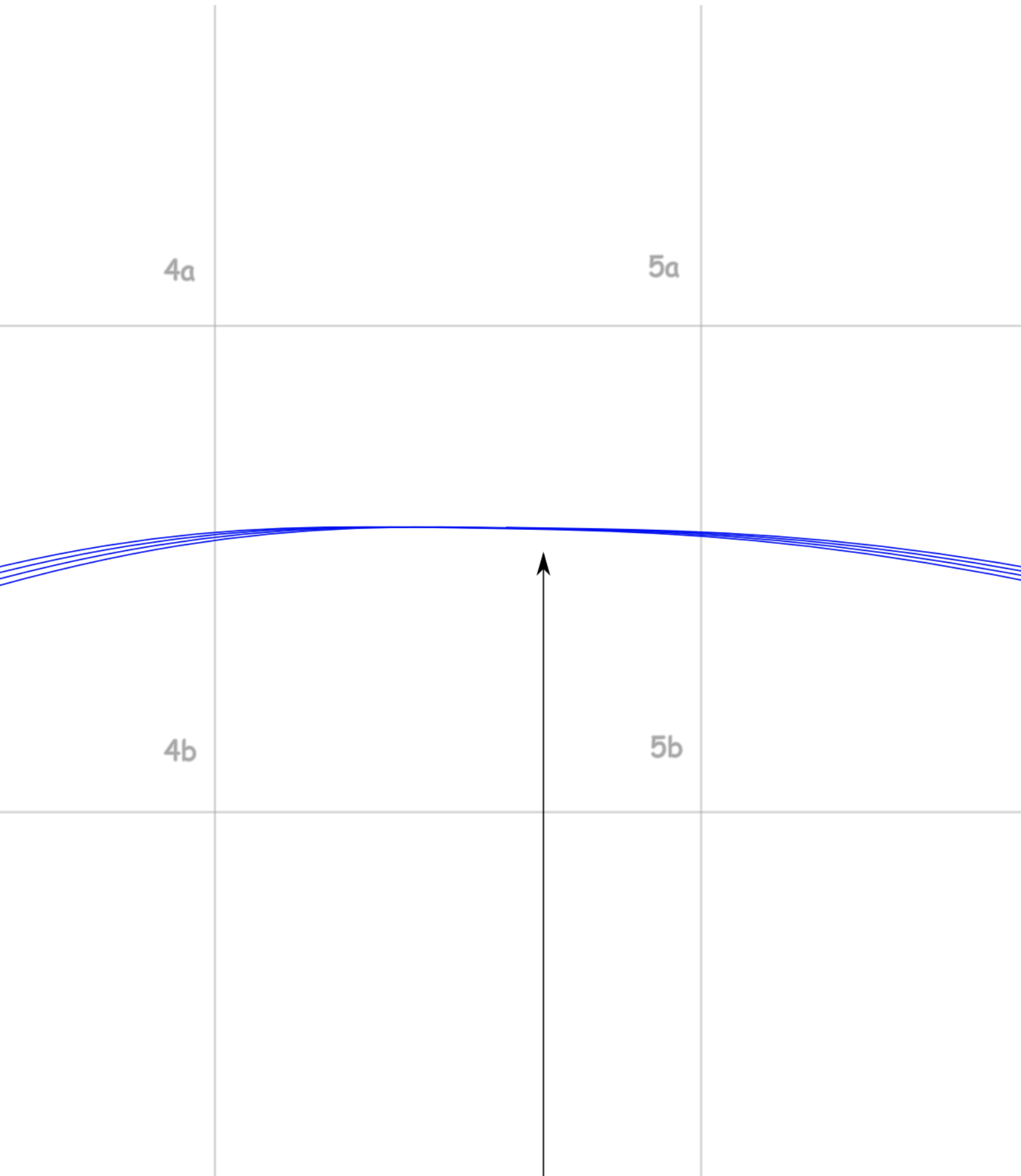


4a

5a

4b

5b



6a

7a

6b

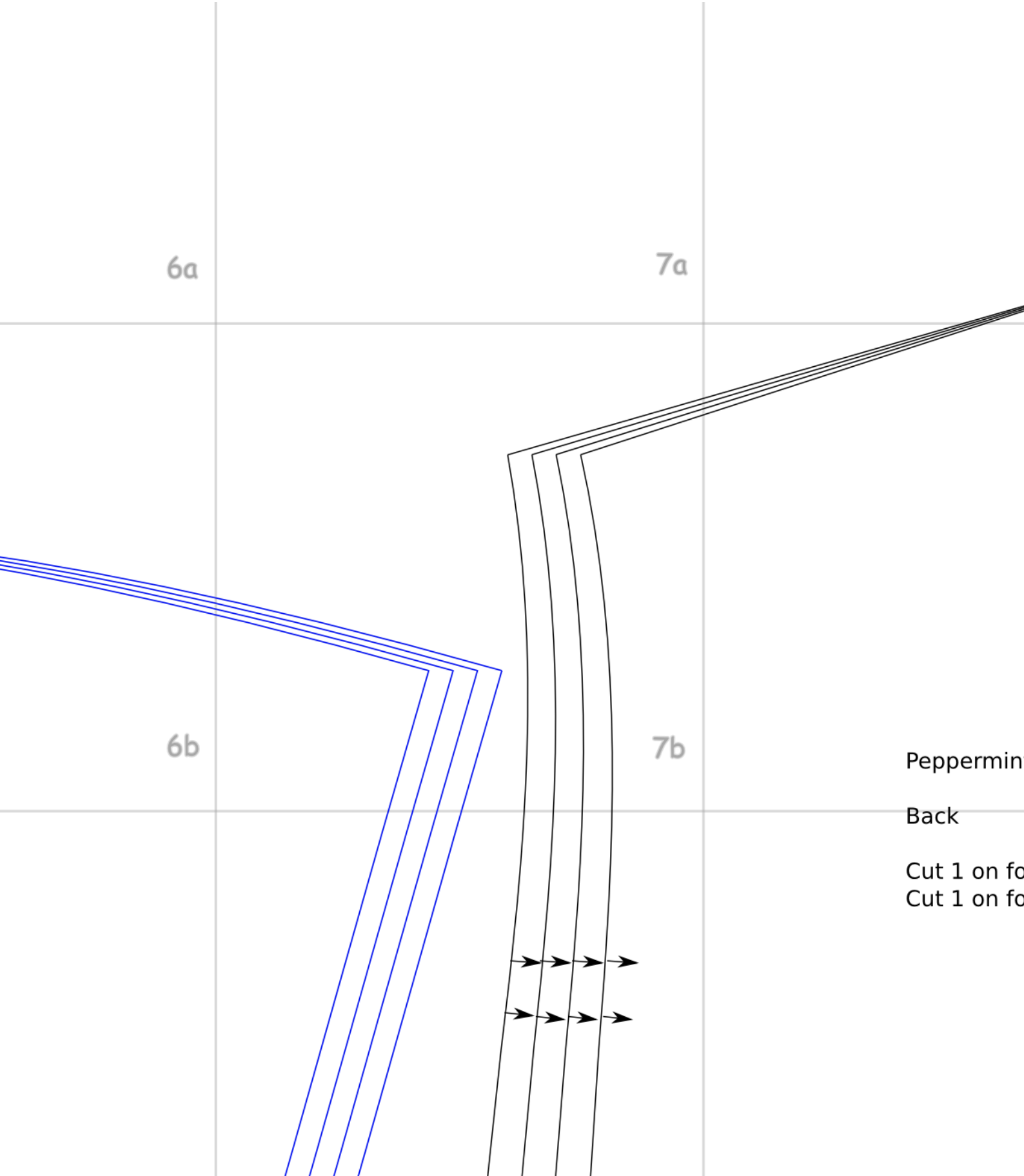
7b

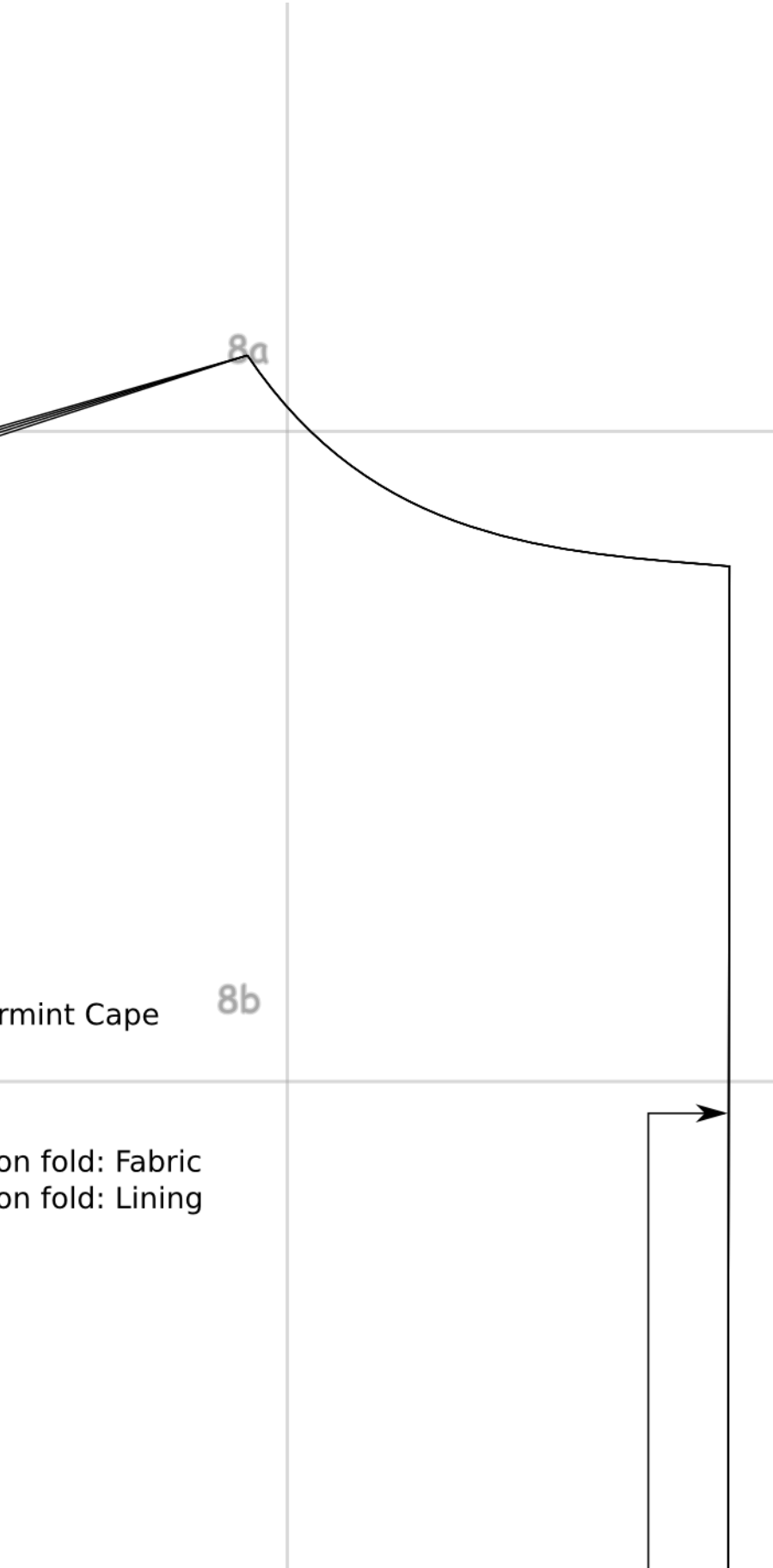
Peppermint

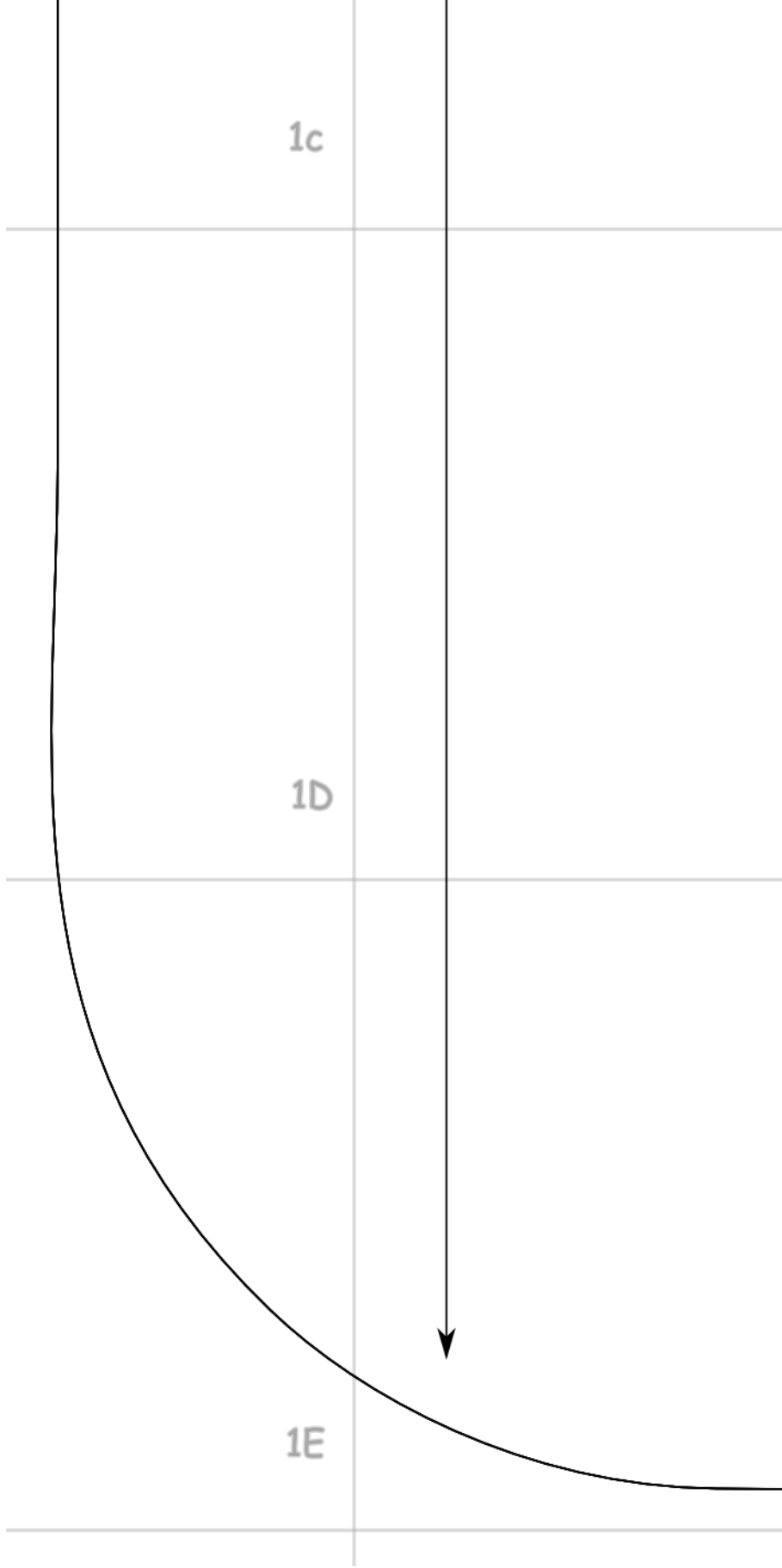
Back

Cut 1 on fo

Cut 1 on fo



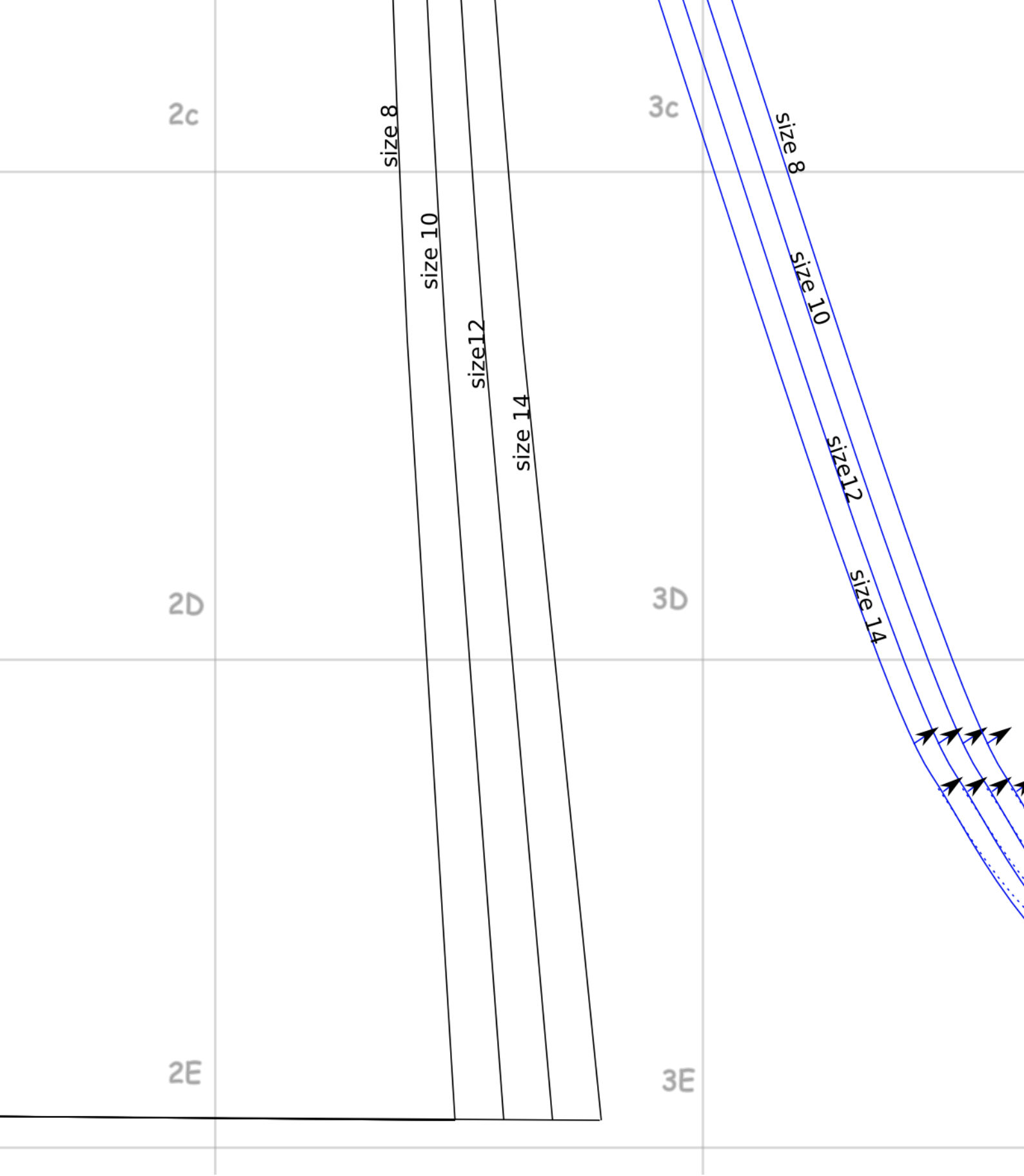




1c

1D

1E



4C

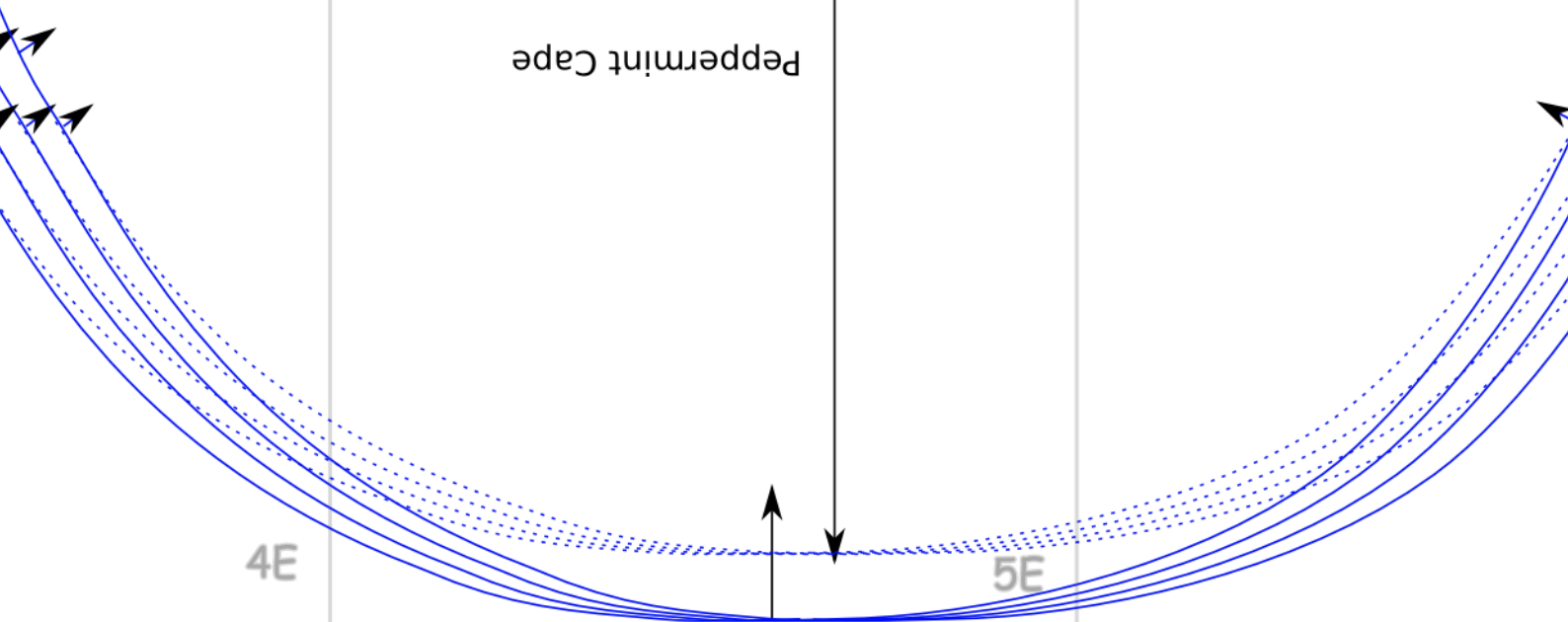
5C

4D
Cut 2: Fabric following solid line
Cut 2: Lining following dashed line

5D

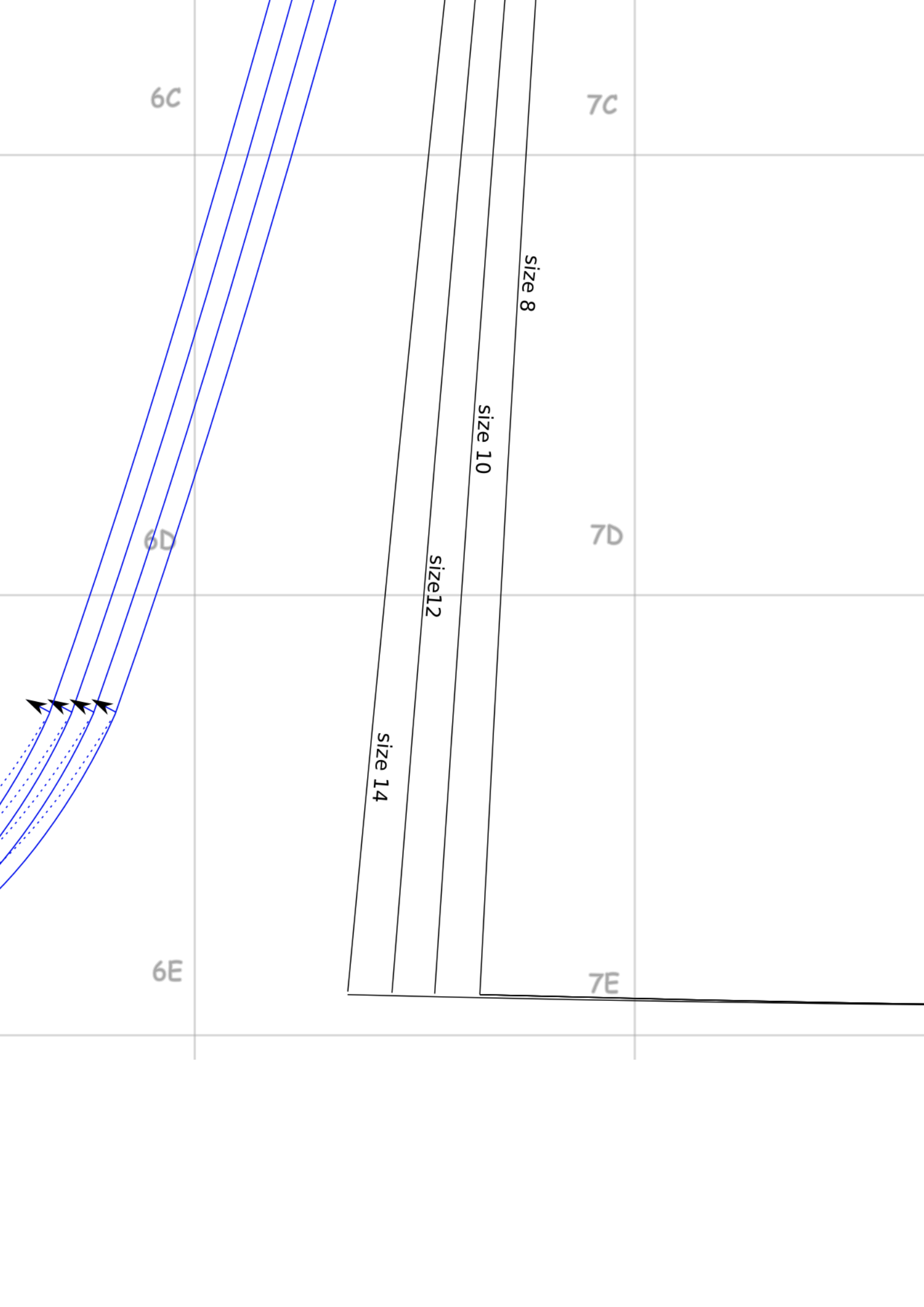
Sleeve

Peppermint Cape



4E

5E



8C

8D

8E

