

RUFFLE SLEEVE TOP SEWING PATTERN

FEEL FREE TO HACK THIS PATTERN, ADD TO THIS PATTERN, LOVE THIS PATTERN AND TO MAKE IT OVER & OVER BUT PLEASE REMEMBER THAT IT'S FOR PERSONAL USE ONLY

HAPPY SEWING!

© Emily Hundt

PATTERN SIZE KEY

- SIZE A
- SIZE B
- SIZE C
- SIZE D
- SIZE E
- SIZE F
- SIZE G
- SIZE H
- SIZE I
- SIZE J

We're super excited to bring you these patterns in partnership with the lovely people of The Fabric Store. With a passion for all things sewing, they stock an incredible range of fabric - from quality linen, silk, cotton, merino and even leather - at their Sydney, Melbourne, Brisbane and New Zealand stores, as well as a small selection online.

The Fabric Store

PATTERN SYMBOL KEY

- I NOTCH
- II DOUBLE NOTCH
- DRILL HOLE
- BUTTON HOLE
- CUTTING LINE
- - - STITCH LINE
- GRAINLINE
- ↑ PLACE PATTERN ON FOLD
- LENGTHEN / SHORTEN LINE

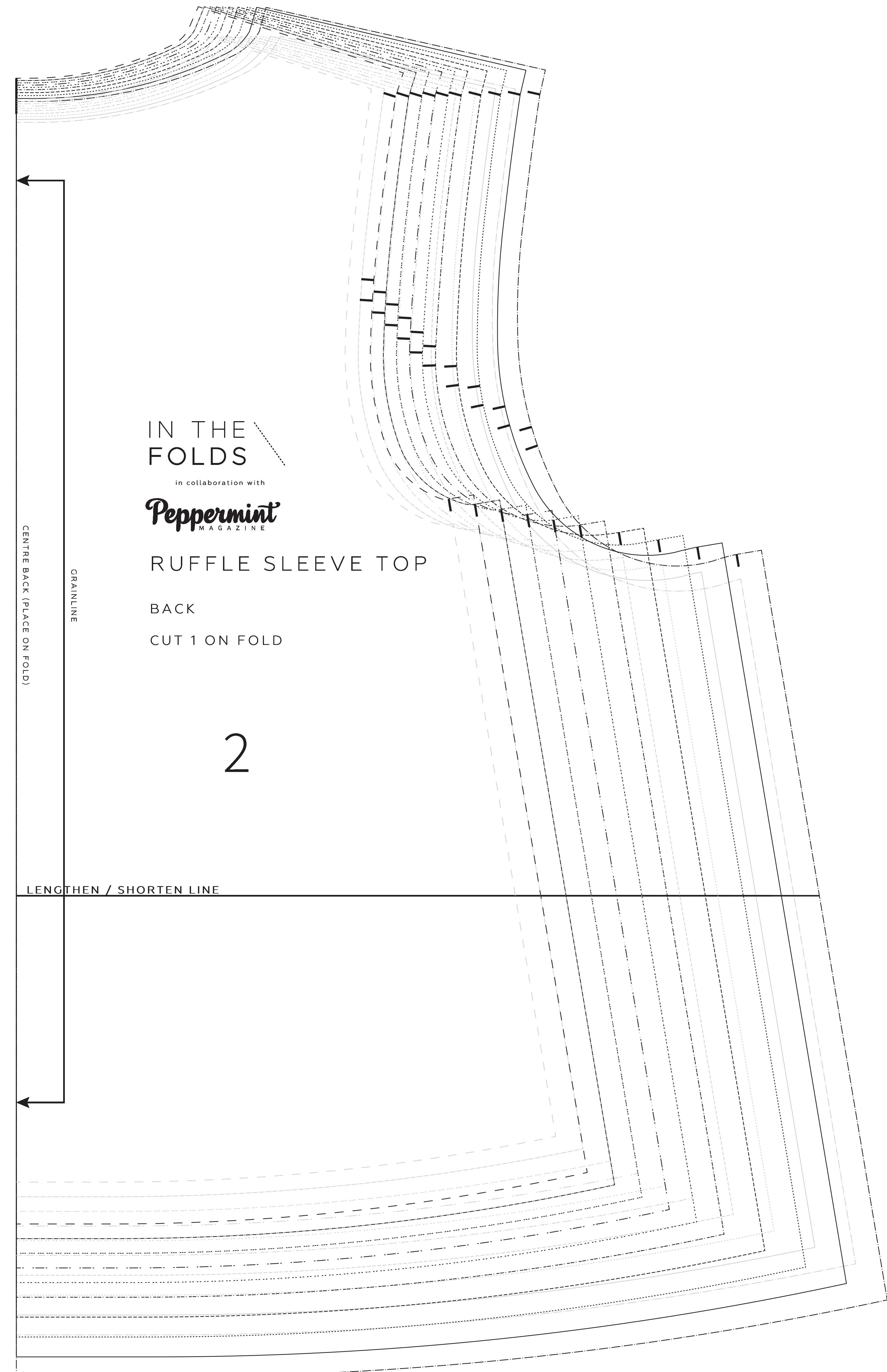
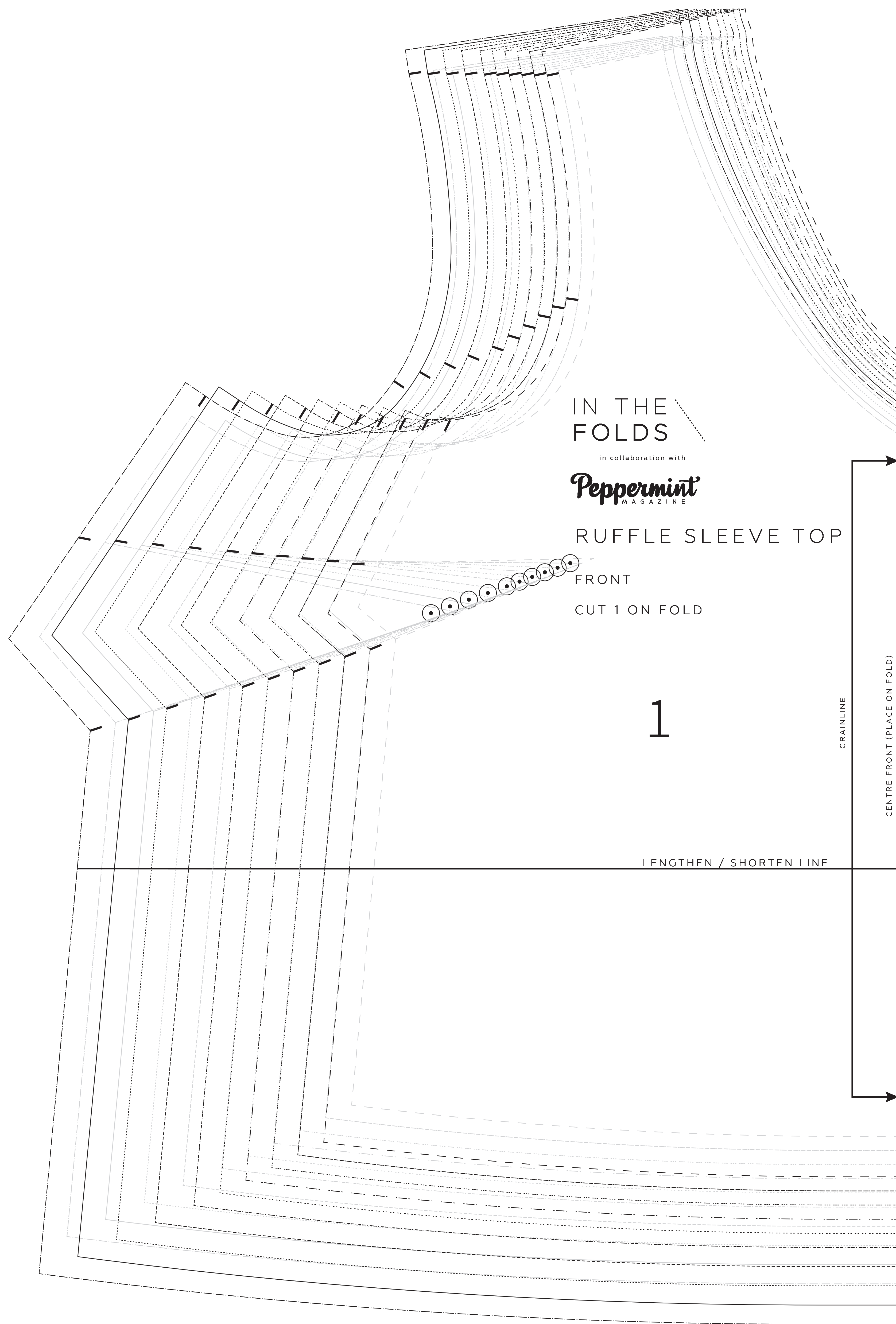
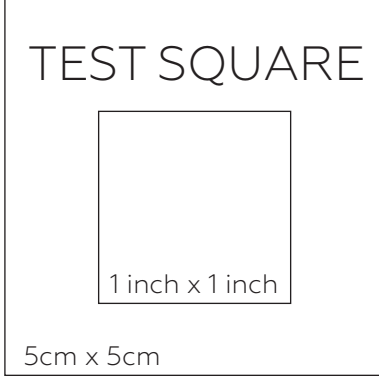
PLEASE NOTE: SEAM ALLOWANCES ARE INCLUDED AND ARE 1.2cm (5/8") UNLESS OTHERWISE STATED

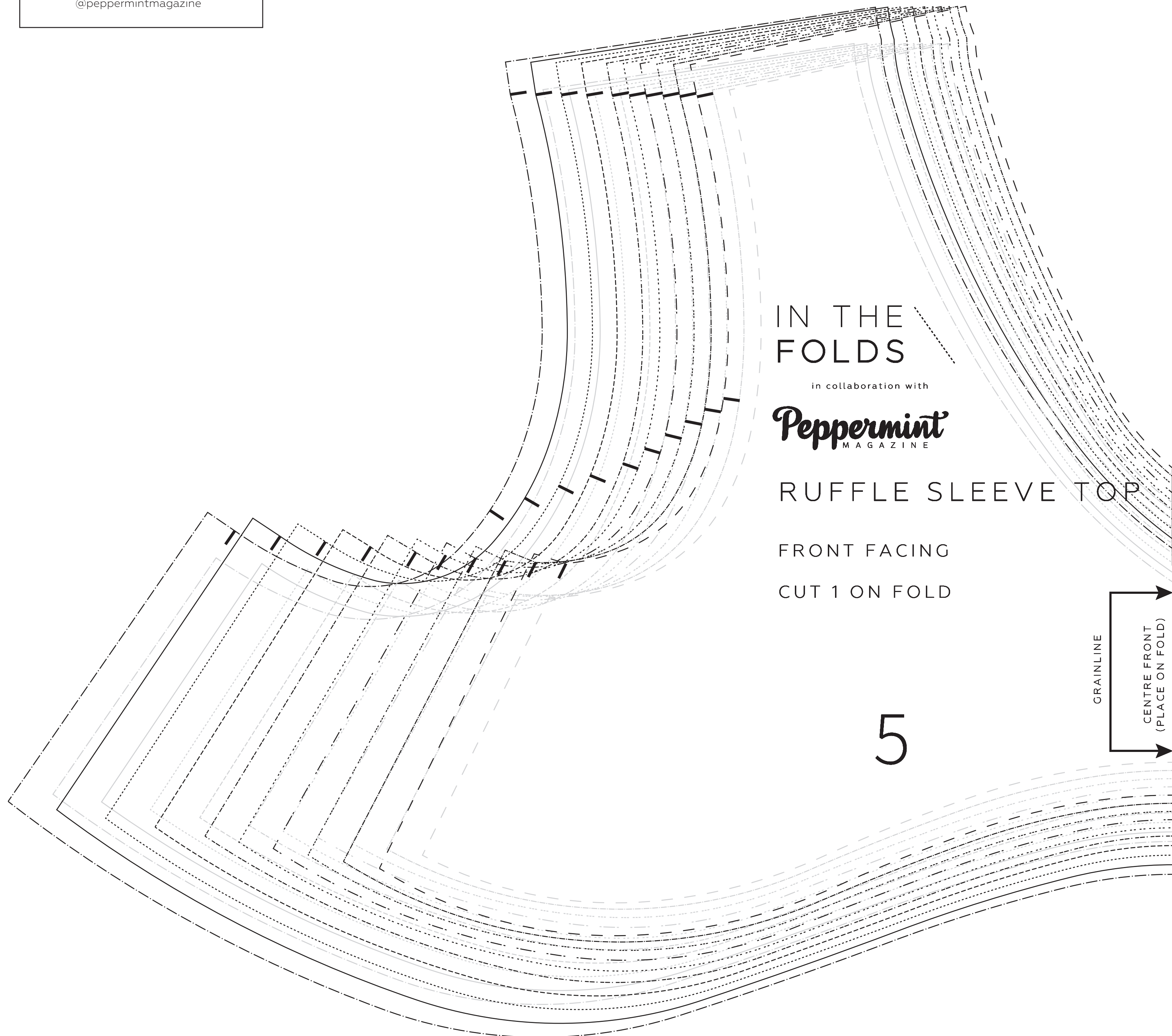
SHARE YOUR MAKES



#peppermintsewandtell

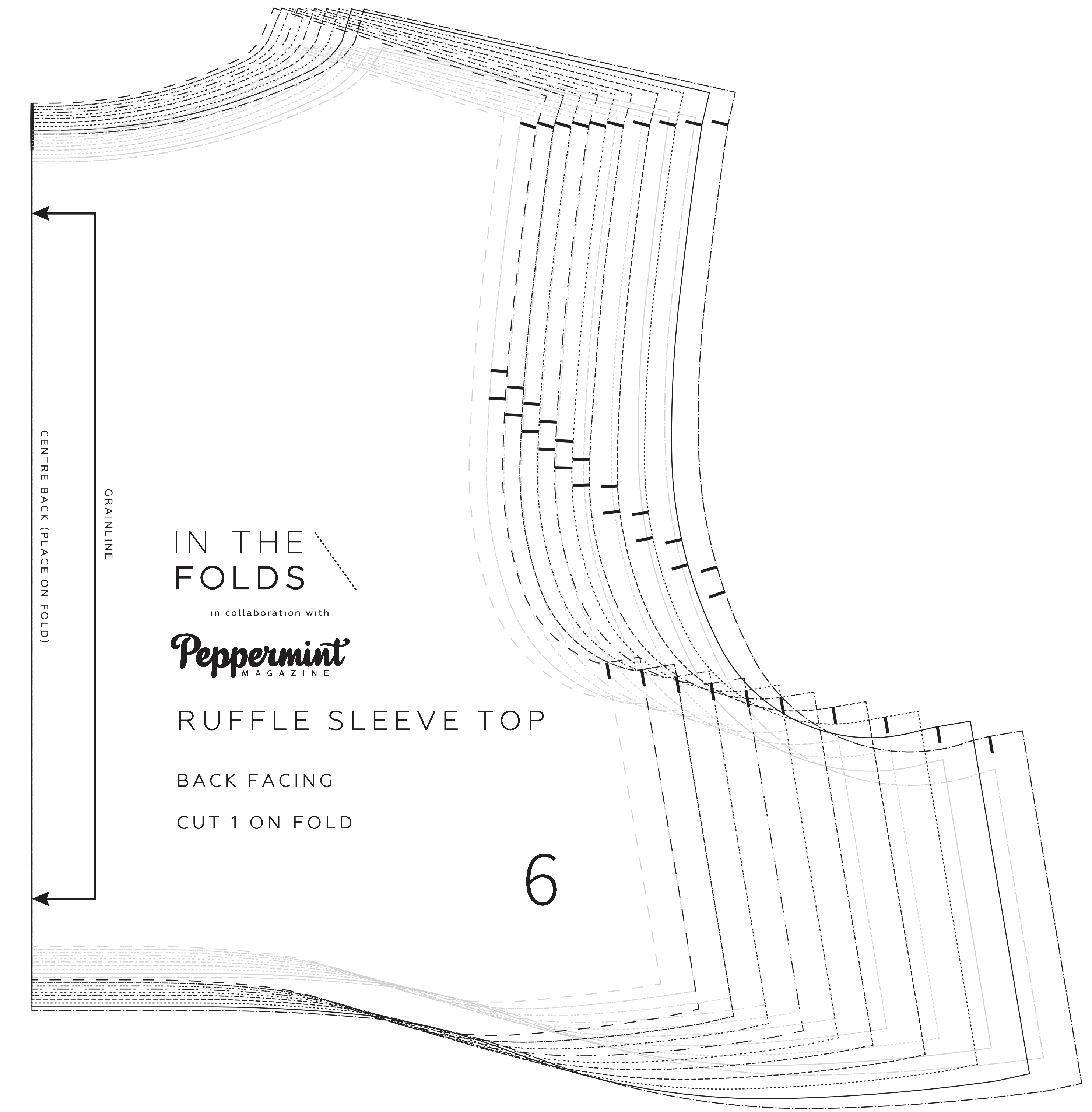
Tag us @inthefolds @peppermintmagazine





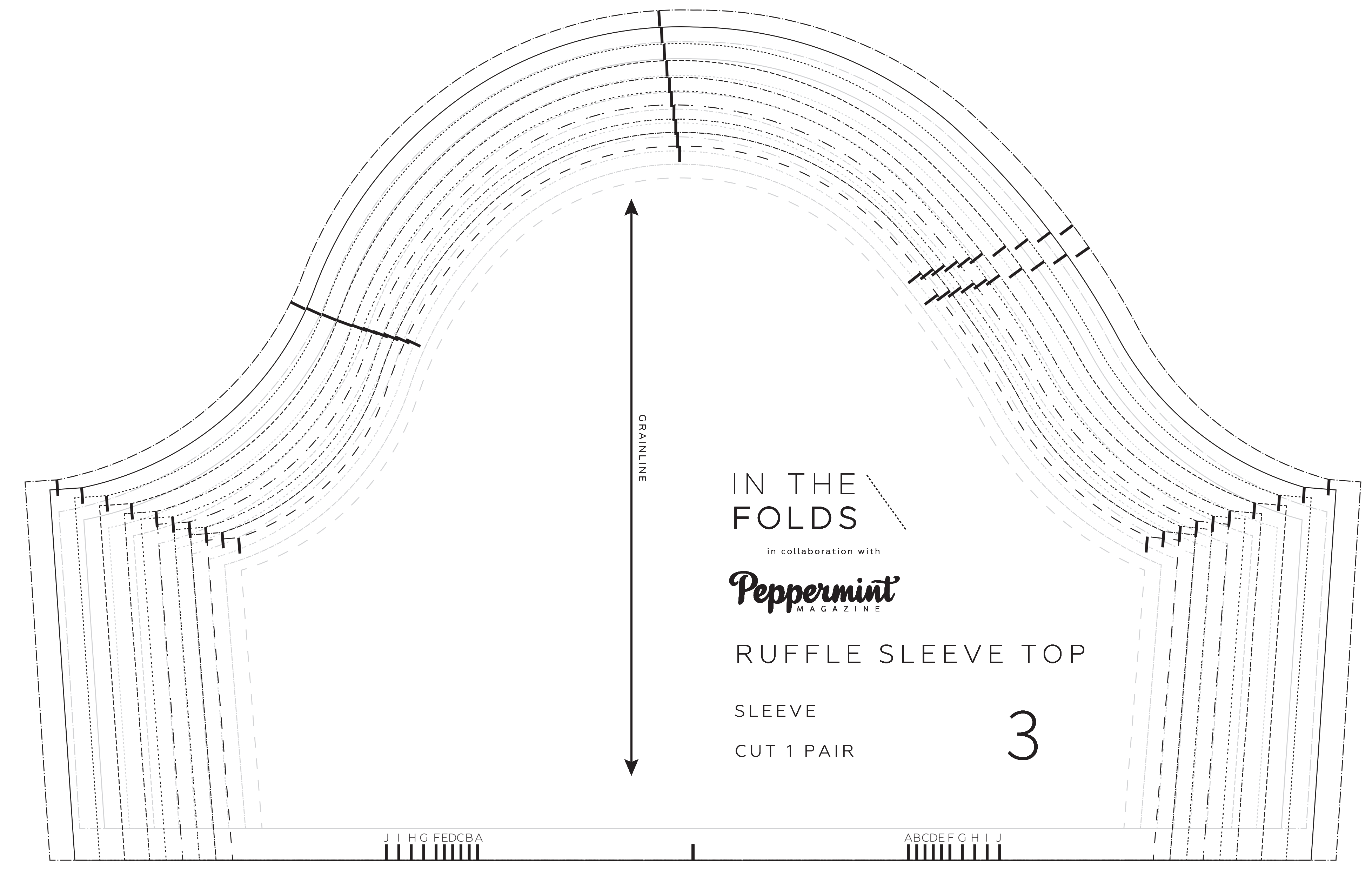
IN THE FOLDS
 in collaboration with
Peppermint
 MAGAZINE
 RUFFLE SLEEVE TOP
 FRONT FACING
 CUT 1 ON FOLD

5



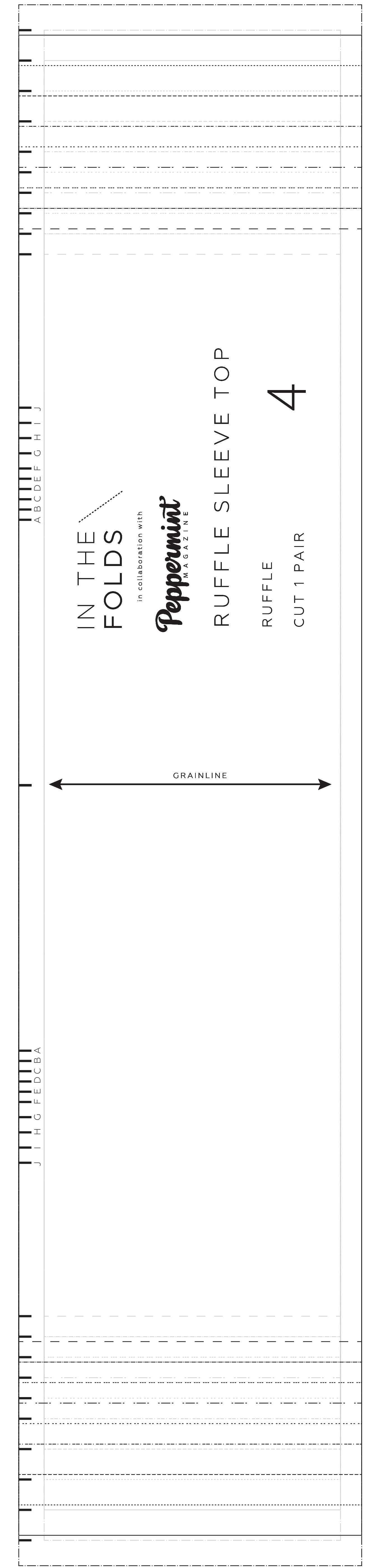
IN THE FOLDS
 in collaboration with
Peppermint
 MAGAZINE
 RUFFLE SLEEVE TOP
 BACK FACING
 CUT 1 ON FOLD

6



IN THE FOLDS
 in collaboration with
Peppermint
 MAGAZINE
 RUFFLE SLEEVE TOP
 SLEEVE
 CUT 1 PAIR

3



IN THE FOLDS
 in collaboration with
Peppermint
 MAGAZINE
 RUFFLE SLEEVE TOP
 RUFFLE
 CUT 1 PAIR

4